

# **Sexual Orientation in the Census**

## **General Register Office for Scotland**

### **1 Executive Summary**

- 1.1 A case has been put forward for a question on sexual orientation to be included in the 2011 Census. A primary driver for this is the need for data to baseline the monitoring of equality legislation which will be in effect at the time of the 2011 Census.
- 1.2 GROS conducted a small scale postal survey as a first step to understand public attitudes to a sexual orientation question and the feasibility of mounting the question in a Census.
- 1.3 4,400 1 person, Census style forms were sent to a geographically representative random sample of Scottish households. There were 4 variants of the form which are explained in paragraph 3.1.3. Half of the forms included a sexual orientation question, half did not. An example of the form is included as Appendix B.
- 1.4 There was no difference in the response rate between form variants. However the overall response rate was only 31% and certain groups were more likely to respond than others (see section 7). This result cannot be generalised to draw conclusions about the response rate of the public as a whole.
- 1.5 The results from the sexual orientation question in the two questionnaires which included it are summarised in table 4. Overall only 2.2% of respondents declared non-heterosexual sexual orientation. The non-response to the question was around 6% and a further 8.5% of respondents selected "Prefer not to answer". Therefore in this test the percentage of respondents who did not provide useful data is around 14%. This far outweighs the percentage of respondents who declared a non heterosexual sexual orientation. The survey results call into question the accuracy of data gather by such a question and hence the utility of any such data.
- 1.6 Further work to address the requirement for data on sexual orientation will be considered in partnership with representatives of the Lesbian, Gay, Bisexual and Transgender (LGBT) community, partner organisations in the UK Census and other interested parties in the Government Statistical Service.

## **2 Background**

### **2.1 Introduction**

2.1.1 In response to public and user consultation both the Office for National Statistics and the General Register Office for Scotland have had requests for the Census in 2011 to collect information on sexual orientation. There are a number of issues which must be resolved before the inclusion of such a question can be considered.

### **2.2 Legal Issues.**

2.2.1 The present Census Act allows for collection of information on the social and civil condition of the population; it is not clear whether or not sexual orientation constitutes a social or civil condition. It must also be borne in mind that including such a question on the Census amounts to a legal requirement for an individual to declare their sexual orientation, unless the question is made voluntary – see paragraph 2.2.2. It is possible that such a requirement does not sit well with the European Convention on Human Rights. These issues are not yet resolved.

2.2.2 There is a precedent to asking a voluntary question in the Census. In 2001 there were 2 religion questions in Scotland and Northern Ireland and one in England and Wales. These were included on a voluntary basis and required an amendment to the Census Act. Because of these problems the question we tested in our initial small scale survey includes a “Prefer not to answer” tick box.

### **2.3 Coverage**

2.3.1 The primary obligation of a Census office is to maximize Census coverage. It is important that everyone in the population returns a Census form and that the population is consequently enumerated as fully as possible. There is a well documented trend of diminishing rates of return in Censuses in the UK and across the world. Following the 2001 Census it is clear that coverage will be a key issue for the 2011 Census. Even without this background there is concern that asking a question on sexual orientation may affect coverage.

2.3.2 Sexual orientation is clearly a sensitive topic - although the public debate is progressively more accepting. However, there are still concerns that negative reaction to the topic might lead to enumeration problems. Such possible effects must be carefully considered before inclusion can be supported.

### **2.4 Data Quality**

2.4.1 It is important Census questions provide meaningful data and that non-response and errors are small enough that the output data is useful and reflects reality. There are a number of reasons, not unique to this question,

but potentially more acute because of the sensitive nature of the topic, why people may be less willing to accurately answer certain Census questions.

- 2.4.2 Although individuals can request and return an individual form if they wish to protect their privacy within a household it may be more likely that members of a family unit would record that they are heterosexual, rather than request an individual form to declare a different sexual orientation. There may also be concerns about data security because Census Enumerators will generally be relatively local to the respondent. It is possible that this may be less of an issue in the 2011 Census if online completion is available to Census respondents.
- 2.4.3 The voluntary nature of a question may increase item non-response which has a consequent effect on data quality. This did not appear to be the case in 2001 with religion questions. However these were included in the main questionnaire and the note pointing out the voluntary nature of these questions was included on the front page of the form. Also previous fieldwork had shown that the public did not consider the religion question to be controversial. If it is not possible to secure appropriate legislation the question on sexual orientation may have to be compulsory, but with a “prefer not to answer” option.

## 2.5 Business Case

- 2.5.1 Every question or topic to be included in a Census must satisfy certain standard criteria which ensure that the Census is the most appropriate and cost effective method for capturing the required data. These criteria are summarised on the following web page:

<http://www.gro-scotland.gov.uk/statistics/census/censushm2011/how-to-develop-a-census-question.html>

## 3 **Small Scale Post Out Test.**

### 3.1 Design

- 3.1.1 In September 2005 GROS ran a small scale postal test as a first step in investigating the feasibility of various candidate questions for the 2006 Census Test in the context of a trial Census Test form. It included a simple design to take a preliminary look at the response effect of including a question on Sexual Orientation in a survey.
- 3.1.2 The trial form was sent to 4,400 households across Scotland. There were four variants of the form. Each variant contained a core set of questions which did not differ between variants. All of these questions were either new or substantially modified questions, which were candidates for inclusion in the 2006 Census Test at an early stage of development or 2001 Census questions.

- 3.1.3 The variation in the form consisted of the inclusion or not of a question on discrimination and the inclusion or not of the draft sexual orientation question (see Table 1). We included a discrimination question to put the sexual orientation (and other identity questions such as those on ethnicity) in context and to see if it had any effect on the answers people were willing to provide.
- 3.1.4 The households were selected at random from the Royal Mail Postcode Address File. The sample proportionately reflected each Local Authority and each deprivation group. The Scottish Index of Multiple Deprivation classifies all areas across Scotland based on 31 indicators in the six individual domains of Current Income, Employment, Housing, Health, Education, Skills and Training and Geographic Access to Services and Telecommunications. Roughly 10% of the households in the sample lay in each decile (10%) of deprivation.

Table 1. Form numbers

	Discrimination	No Discrimination
Sexual Orientation	Form 1. 1,100 Forms	Form 2. 1,100 Forms
No Sexual Orientation	Form 3. 1,100 Forms	Form 4. 1,100 Forms

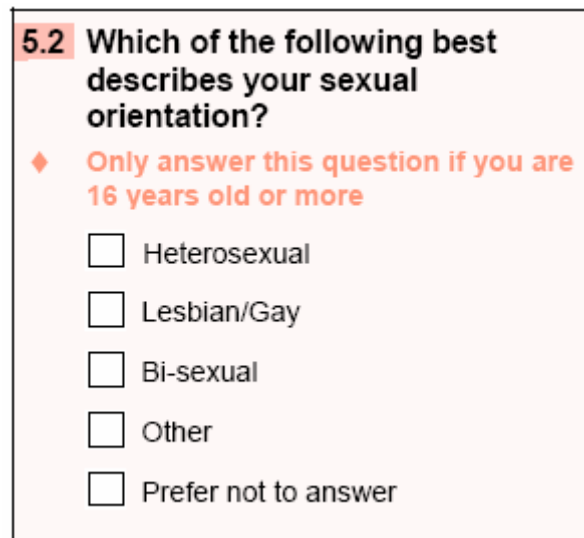
- 3.1.5 It is known that Postal Surveys of this nature typically attract a better response from certain sectors of the population than from others. ***It should be stressed that the results were expected only to be indicative and that, whatever the outcome, further work would be required to properly understand any effect on response rates.***
- 3.1.6 Forms included only one set of personal questions with an instruction that the householder, to whom the envelope and covering letter was addressed, should nominate a household member to fill out and return the form. The effect of within household confidentiality was therefore not within the scope of this test. (Given the limited nature of this test (see paragraph 3.1.5) the extra cost in printing, postage and most significantly processing by keyers of getting multiple responses from each sample household was not deemed justified at this stage).
- 3.1.7 Only one mailing was made to sample households. No reminders were sent and there was no other follow-up.
- 3.1.8 The four page form, which consisted of a covering letter and 3 pages of personal and household questions was accompanied by a “Your Views” sheet which included a 5 point scale to allow respondents to express their “happiness in answering” each question. There was also a free text box to allow individuals to record comments.

#### **4 Questions**

4.1.1 An example of the form which was sent to households is included in Annex B.

## 4.2 Sexual Orientation

4.2.1 The question on Sexual Orientation is shown below:



**5.2 Which of the following best describes your sexual orientation?**

◆ Only answer this question if you are 16 years old or more

Heterosexual

Lesbian/Gay

Bi-sexual

Other

Prefer not to answer

4.2.2 The question was drafted in consultation with representatives of the LGBT community. It also took cognisance of other available research, notably a report by UMR Research, commissioned by Statistics New Zealand, which covers a program of qualitative research about this topic in a Census. That report is available here:

<http://www.stats.govt.nz/developments/sexual-orientation-research.htm>

4.2.3 We considered including a write in box for the category “other”. This was dismissed as relevant only to a small number of respondents and potentially a magnet for facetious response.

4.2.4 The age restriction of 16 is based on the age of consent and is considered the most sensible cut off.

4.2.5 The inclusion of the “prefer not to answer” category was necessary. At this stage it is unclear whether or not it is legal or acceptable for a compulsory government survey to require an individual to declare their sexual orientation. A question without such an option might require amendments to legislation.

## 4.3 Discrimination

4.3.1 The question on discrimination which was included in this trial asks “Do you experience negative discrimination on any of the following grounds?” with an instruction “Tick all boxes that apply. Available options were “Accent”, “Age”, “Colour”, “Disability”, “Ethnicity”, “Gender”, “Language”, “Nationality”, “Religion/Faith/Belief” and “Sexual Orientation”.

4.3.2 This question was drafted to encompass a range of possible discrimination with a view to covering all areas which will be covered by legislation at the time of the 2011 Census. The question included in the 2006 Census Test has been further developed since the post out test that this report deals with.

#### 4.4 Civil Partnership

4.4.1 The marital status question included in the survey followed the 2001 question wording but with an additional box labelled "Civil Partnership". At the time of the trial there were no Civil Partnerships in Scotland as the legislation was not yet in force. This was included to see if people misunderstood the meaning of the term.

4.4.2 52 respondents out of 1389 selected "Civil Partnership" as their marital status. This information was important in drafting a revised Marital/Civil Partnership question which is now included in the 2006 Census Test.

## 5 Results

### 5.1 Response Rates

5.1.1 The return rates for each variant of the form are recorded in Table 2. In this small sample the response rate did not vary with the inclusion of discrimination or sexual orientation questions. The response rate of 31% means that this finding is of limited value. The non-response was also differential, that is, certain groups of the population were less likely to respond than other see section 7. For both these reasons ***it is not possible to generalise this finding to the population as a whole.***

Table 2. Return Rates

	Form 1 Sexual Orientation Discrimination	Form 2 Sexual Orientation No Discrimination	Form 3 No Sexual Orientation Discrimination	Form 4 No Sexual Orientation No Discrimination
Number of Forms Returned	346	346	355	342
Percentage Return Rate	32%	32%	32%	31%
	Forms including Sexual Orientation		Forms Excluding Sexual Orientation	
Cumulative No.	692		697	
Cumulative %- age.	32%		32%	

## 5.2 Item Non-Response

- 5.2.1 Item non-response rates (percentage of returned forms which had no ticks in a particular question) for some of the questions are summarised in Table 3. Where a comparable question was asked in the 2001 Census the item non-response rate in that Census is included.
- 5.2.2 The non-response rates for the sexual orientation question do appear to be slightly higher than for other questions on the form, although they are similar to those for the question on unpaid help or support (“care”) which immediately follows. The care question item non-response is, however, broadly similar on all four questionnaires and broadly comparable to that in the 2001 Census.
- 5.2.3 Considering the questions on country of birth, health over the last 12 months and current religion in comparison to the 2001 Census non-response rates it seems reasonable to expect that those individuals who have returned a small scale trial form are less likely than the population as a whole to fail to provide response on individual items in their return. Given the voluntary nature of this exercise and the fact that only the most compliant sector of the population are known to respond this is unsurprising. It is thus reasonable to postulate that item non-response rates in this exercise are underestimates of those which could be expected in the Census. It is worth noting that the non-response to the sexual orientation question is relatively high.

Table 3. Item Non-Response in the Post Out Test (and 2001, where applicable)

Question	Form 1	Form 2	Form 3	Form 4	Total	2001
What Type of Central Heating does your accommodation have?	0.6%	0.3%	0.3%	0.3%	0.4%	N/A
Over the last 12 months would you say your health has been: ?	0.6%	0.9%	0.6%	1.2%	0.8%	3.7%
What is your country of birth?	1.2%	0.6%	1.1%	2.9%	1.4%	2.6%
What religion, religious denomination or body do you belong to?	4.9%	4.0%	4.2%	4.7%	4.5%	8.0%
Which of the following best describes your sexual orientation?	6.1%	5.8%	---	---	5.9%	N/A
Do you look after, or give any help or support to family members, friends ... ?	6.9%	7.8%	6.2%	7.6%	7.1%	6.5%

### 5.3 Response to the Sexual Orientation Question

5.3.1 The full responses to the sexual orientation question are shown in Table 4 and summarised in Figures 1 and 2.

Table 4: Breakdown of Sexual Orientation Responses.

Response	Form 1		Form 2		Total	
Heterosexual	286	82.7%	289	83.5%	575	83.1%
Lesbian/Gay	5	1.4%	1	0.3%	6	0.9%
Bisexual	0	0.0%	3	0.9%	3	0.4%
Other	2	0.6%	4	1.2%	6	0.9%
Prefer Not to Answer	32	9.2%	27	7.8%	59	8.5%
Non response	21	6.1%	22	6.4%	43	6.2%

5.3.2 The item non response of 6% considerably outweighs the percentage response in the categories of interest, which sum to around 2%. When the prefer not to answer responses are also considered, it becomes clear that the quality of the data collected is questionable.

5.3.3 It should also be borne in mind that as this was a one person, postal return form, any within household and household to enumerator confidentiality concerns may have had less of an effect on these data than would be the case in a household survey or Census.

## 6 Respondent Views

6.1.1 The survey included a final sheet which allowed respondents to record their views on the questionnaire. This is reproduced with the main questionnaire in Appendix B.

### 6.2 Happiness

6.2.1 The front page of the “Your Views” sheet listed the questions included in the main questionnaire and asked the question “Were you happy in answering these questions?” with an instruction to “indicate how you felt about these questions by ticking the appropriate box”. The boxes were presented below a five point scale of “smiley faces” intended to informally represent a scale from very happy through indifferent to very unhappy.

6.2.2 Figure 6 summarises the responses about each individual question on the five point scale. For most questions the percentage of respondents who indicated that they were very unhappy or unhappy with the question is less than about 5%. The question on sexual orientation stands out with around 11% of respondents selecting very unhappy or unhappy on the scale.



### 6.3 Comments of Respondents

- 6.3.1 The back page of the “Your Views” sheet included a free text box containing the instruction “Please write in here if you have any comments about any questions”.
- 6.3.2 Comments relating to the question on sexual orientation ranged from fully accepting to hostile. A representative digest follows.
- 6.3.3 Examples of comments typical of those which accepted the question without reservation are recorded in paragraph 6.4.1. Some respondents accepted the question with some reservation, either answering it or selecting “prefer not to answer”. Typical comments in this vein are recorded in paragraphs 6.4.3 and 6.4.4.
- 6.3.4 Respondents who expressed concern or unhappiness with the question gave a number of reasons. These included not understanding the need for the data (paragraph 6.4.4) and unhappiness with the intrusive nature of the question, (paragraph 6.4.5). Comments of a respondent who was offended and concerned about confidentiality are recorded in paragraph 6.4.6. Paragraph 6.4.7 records another example of comments expressing concern about confidentiality.
- 6.3.5 Some respondents comments suggested that they had possibly misunderstood or misinterpreted the question. Examples of these are recorded in paragraphs 6.4.8 and 6.4.9.
- 6.3.6 Respondents who did not respond at all to the question generally also declined to record any comments on the Your Views sheet. It is interesting to note that expressed concerns and anxieties did not necessarily translate into refusal to record an answer in the questions which caused concern. (This was true of other questions included in this test. The evaluation of those questions is beyond the scope of this report.)

### 6.4 Digest

- 6.4.1 A 40 year old male responded that “*The questions were fine. The questionnaire overall was fine as well...*” He answered the sexual orientation question indicating his sexual orientation. Similarly a 73 year old woman commented “*No problem – easy form to complete. Certainly not intrusive.*” She answered the sexual orientation question indicating her sexual orientation.
- 6.4.2 A 32 year old female respondent commented that “*The sexual orientation question was the only one which stuck out like a sore thumb. If I understood why you needed to know this that may be helpful. Whilst I don’t mind answering it, it felt a bit intrusive.*” This respondent answered the sexual orientation question indicating her sexual orientation.

- 6.4.3 A 43 year old male respondent commented that the sexual orientation question "*Is intrusive*". He answered the question using the "Prefer not to answer" option.
- 6.4.4 A 52 year old female commented that "*Whilst my sexuality is not an issue for me, I cannot see why anyone/any organisation could possibly require this information from any other human being (unless they desired a relationship with that person)*" She responded to the sexual orientation question by selecting "Prefer not to Answer".
- 6.4.5 A 61 year old male respondent commented that "*In general the questions are much more intrusive into private life than is warranted for national census.*" Referring specifically to the sexual orientation question he commented "*This is intrusive private matter and should not be in the census*". In spite of these concerns he did answer the question indicating his sexual orientation.
- 6.4.6 A 65 year old male respondent commented "*I take offence at questions about religion & sexual orientation I feel these are highly personal questions about affairs that are no-one else's business. I notice that there is no name & address asked for but at the same time I can be identified by my post code therefore I have deleted this.*" This respondent did answer the sexual orientation indicating his sexual orientation.
- 6.4.7 A 67 year old woman who responded commented "*Asking for the postcode makes a nonsense of supposed anonymity*". Her response to the sexual orientation indicated her sexual orientation.
- 6.4.8 A 78 year old female respondent commented "*I was very happily married to a loving kind generous and devoted husband for 51 (fifty one) years and [the question on sexual orientation] did not apply to either of us.*" This respondent answered the sexual orientation question indicating her sexual orientation.
- 6.4.9 An 82 year old female respondent commented "*At my age now some questions I have to think what some questions mean, but have answered the best I could.*" She did not respond at all to the sexual orientation question.

## **7 Respondent Characteristics.**

- 7.1.1 The level of response (31%) and the characteristics of the respondents to this survey suggest that the response cannot be generalised to the whole population.
- 7.1.2 Figure 3 illustrates the age bias in the response. More than 70% of respondents are over 40. More than 90% are over 30.
- 7.1.3 Figure 4 illustrates the gender bias in response. The male female ratio of respondents is approximately 40 – 60.
- 7.1.4 Figure 5 illustrates the distribution of SIMD quartile of respondents (See section 3.1.4 for a brief explanation of SIMD.). People living in areas which fall

within the 1<sup>st</sup> SIMD quartile are in the quarter of the population which suffers most deprivation, those in the 4<sup>th</sup> quartile are the quarter of the population which suffers least deprivation. There is a slight bias towards respondents in less deprived areas.

## **8 Conclusions**

- 8.1 The absence of a difference in response rates between variants of the form may indicate that the most compliant sections of the population, who typically respond to exercises of this nature are not put off by the inclusion of a sexual orientation question. However it is not possible to draw any conclusions about the population as a whole as the non response rate of nearly 70% is high.
- 8.2 The results from the sexual orientation question in the two questionnaires which included it are summarised in table 4. Overall only 2.2% of respondents declared non-heterosexual sexual orientation. The non-response to the question was around 6% with 8.5% of respondents selecting "Prefer not to answer". Although the results of a survey with this design and low response rates cannot be generalised, it is reasonable to argue that people who did respond are more compliant to surveys than the population as a whole.
- 8.3 The survey results call into question the accuracy of data gathered by such a question. The utility of such gathered data is consequently also questionable.

## **Appendix A.**

Figures 1&2. Response to Sexual Orientation Question.

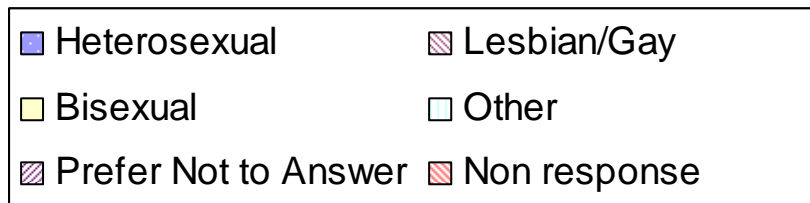
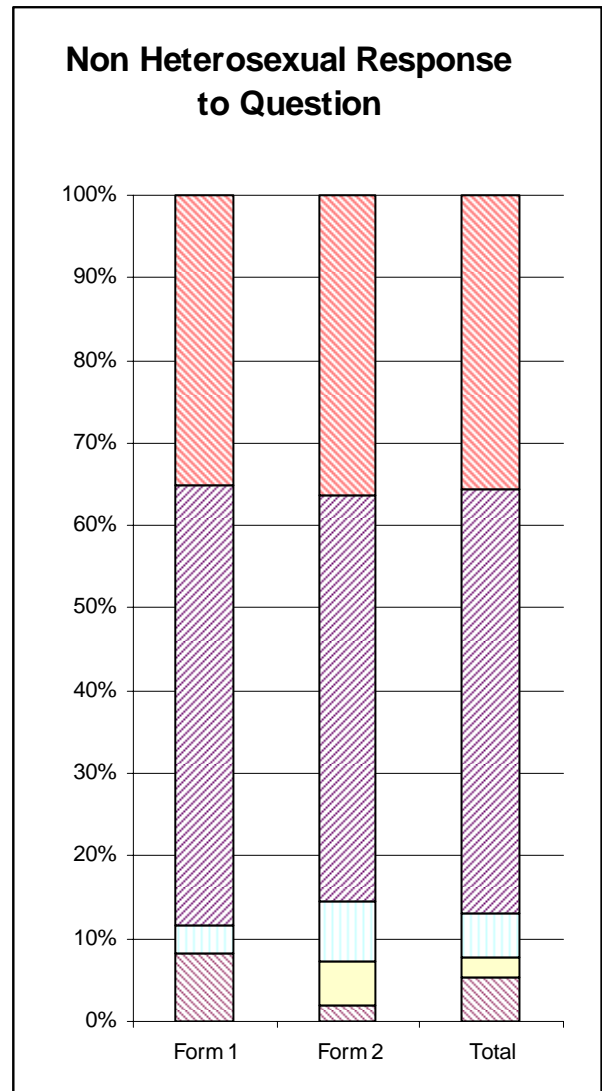
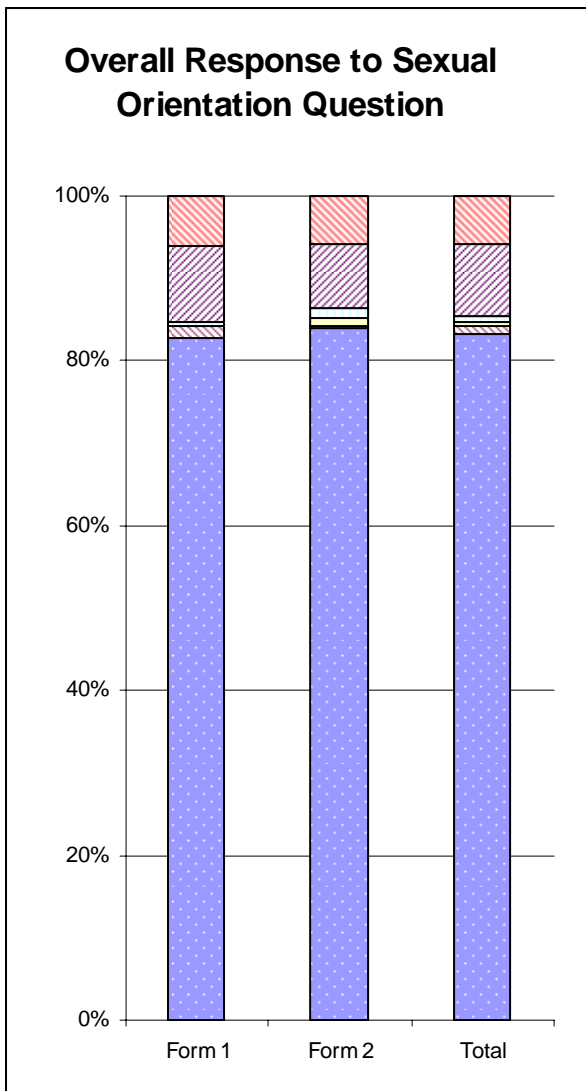
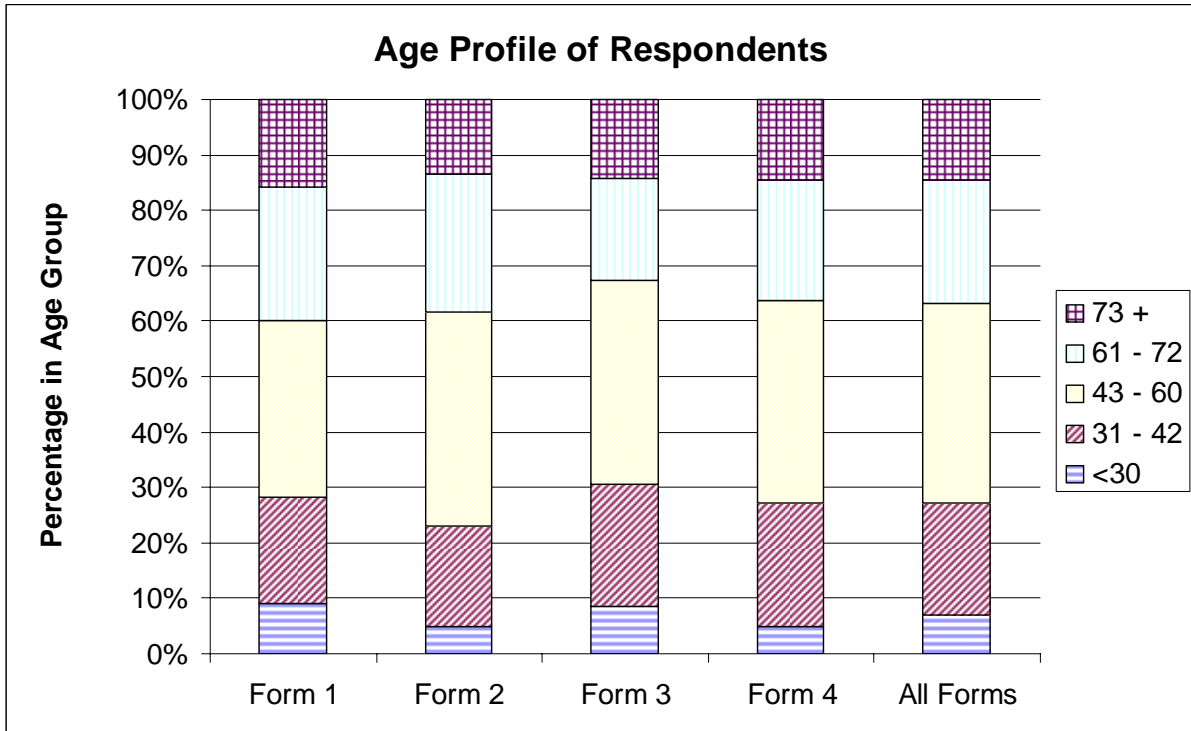
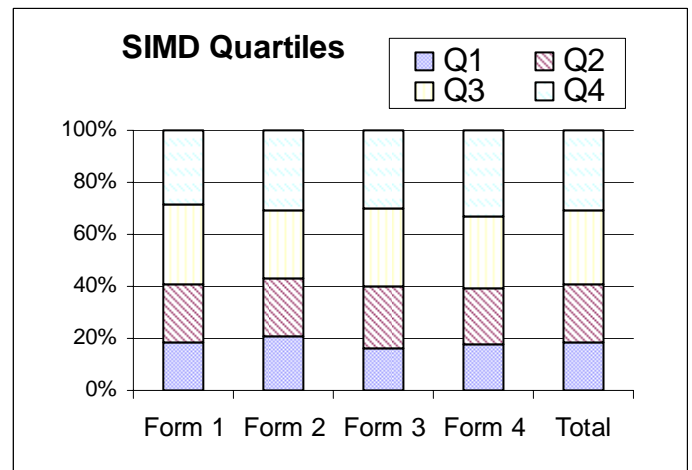
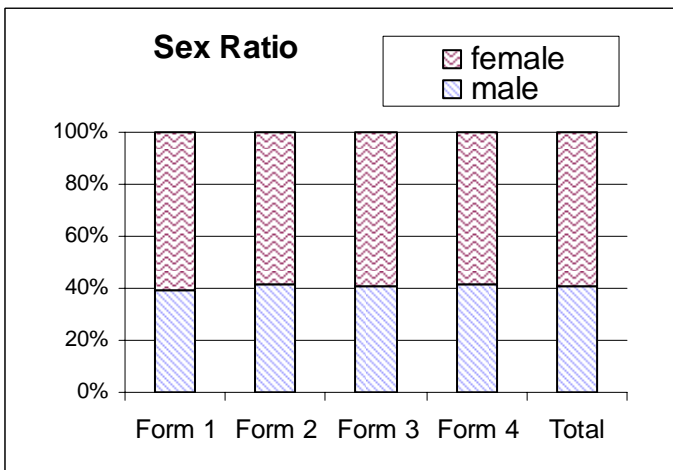


Figure 3. Age of Respondents



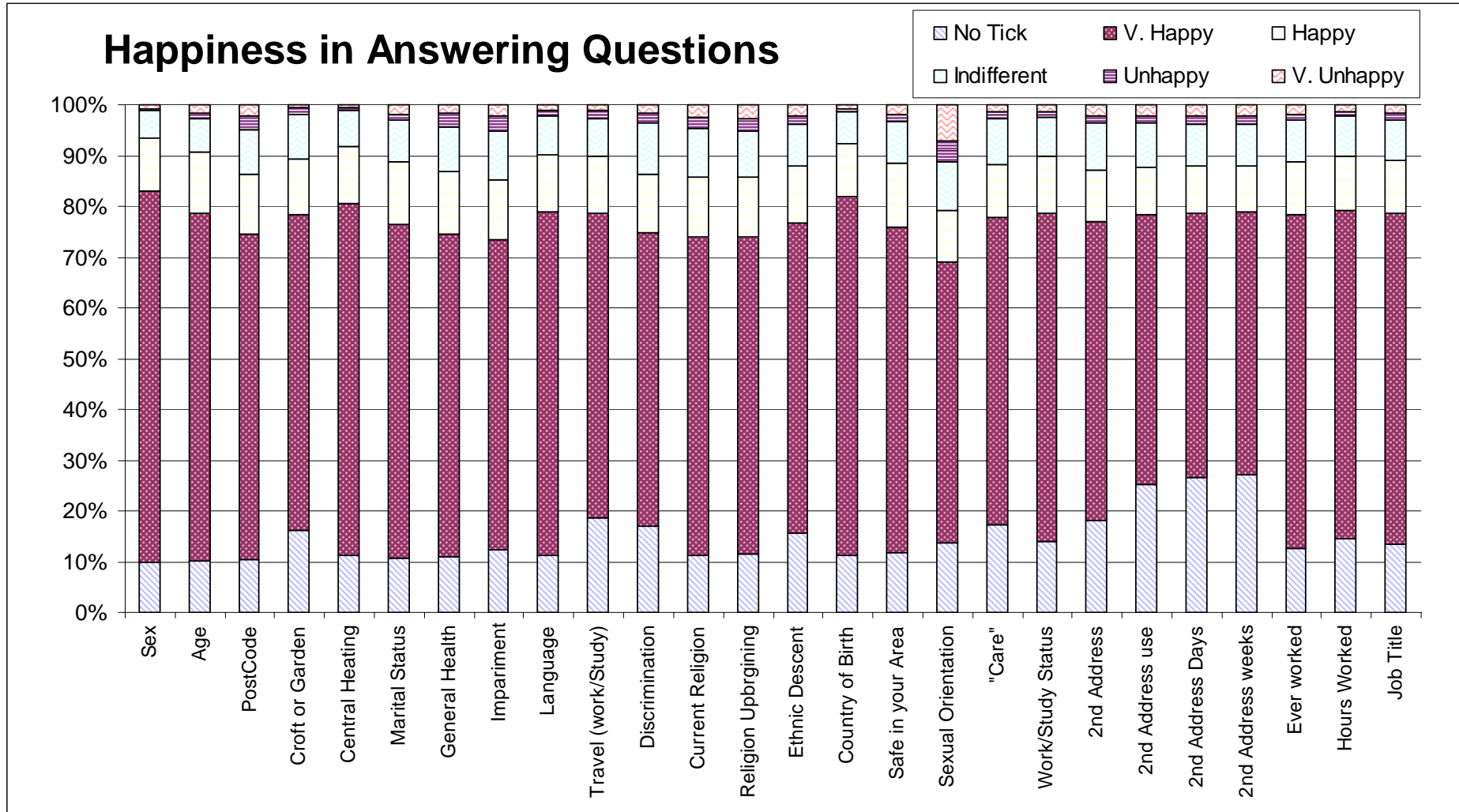
Figures 4 and 5. Sex and SIMD<sup>1</sup> Profile of Respondents.



<sup>1</sup> See paragraph 7.1.4 for an explanation of SIMD.

Figure 6. Happiness in Answering Questions from the Your Views Scale.

(Note that these bar graphs represent the proportion of answers in each category. For the Questions on Sexual Orientation and Discrimination these represent roughly half as responses than for other questions. )



**Appendix B**  
**Example of Questionnaire**



# 2011 Census Development 1

## *Scotland Counts*



2011 Census Consultation  
General Register Office for Scotland  
Ladywell House, Ladywell Road  
Edinburgh, EH12 7TF  
0131 314 4675

Dear Householder,

The Census is vital to developing an understanding of our population - its size, its ethnicity, health and housing. We're getting ready to conduct a new Census in 2011 and we need to make sure that we get the right information for everyone in Scotland.

We have started to consider possible new questions which have been suggested by community groups and groups, such as the NHS, who use information from the Census.

We need your help.

Please nominate a member of your household to complete the enclosed **trial Census form and questionnaire** where they can record their opinions about the form. Then please return them both to me in the freepost envelope provided.

We promise to keep your information confidential and use it only for statistical purposes. For example we will learn lessons about peoples' opinions about the different types of trial form which we are using in this test. This will help us decide what the 2011 form will look like.

Sincerely

Duncan Macniven, Registrar General for Scotland



**Without you, they don't count.**

# Person 1

Use **black or blue ink**. Put a tick in the appropriate box, like this . If you mark the wrong box, fill in the box and put a tick in the right one.

## 1 What is your sex?

Male  Female

## 2 What is your age?

Years

--	--

## 3 What is your postcode?

Postcode

--	--	--	--	--	--	--	--

## 4 Does your household work or occupy a:

- Farm  
 Registered Croft  
 Small holding

### and/or have access to:

- an Allotment  
 a Shared green  
 a Private garden

or

None of the above

## 5 What type of central heating does your accommodation have?

◆ If the central heating system is available, ✓ the box whether or not you use it.

- Electric  
 Gas  
 Oil  
 Solid fuel  
 Other  
 None

## 6 What is your marital status?

- Single (never married)  Separated (but still legally married)  
 Married (first marriage)  Widowed  
 In a civil partnership  Divorced  
 Re-married

## 7 Over the last twelve months would you say your health has on the whole been:

- Good?  Fairly good?  Not good?

## 8 Do you have any physical or mental health problems lasting 6 months or more that cause you difficulty doing any of the following activities:

◆ Include problems which are due to old age.

	Yes	No
Hearing, seeing, speaking or communicating	<input type="checkbox"/>	<input type="checkbox"/>
Walking, climbing stairs, lifting, bending or carrying	<input type="checkbox"/>	<input type="checkbox"/>
Learning, remembering or concentrating	<input type="checkbox"/>	<input type="checkbox"/>

## 9 What are the main languages you are familiar with?

◆ Please tick all boxes which apply

	Understand	Speak	Read	Write	Learnt ...	
					at home	elsewhere
English	<input type="checkbox"/>	<input type="checkbox"/>	<input type="checkbox"/>	<input type="checkbox"/>	<input type="checkbox"/>	<input type="checkbox"/>
Gaelic	<input type="checkbox"/>	<input type="checkbox"/>	<input type="checkbox"/>	<input type="checkbox"/>	<input type="checkbox"/>	<input type="checkbox"/>
Scots	<input type="checkbox"/>	<input type="checkbox"/>	<input type="checkbox"/>	<input type="checkbox"/>	<input type="checkbox"/>	<input type="checkbox"/>
Urdu	<input type="checkbox"/>	<input type="checkbox"/>	<input type="checkbox"/>	<input type="checkbox"/>	<input type="checkbox"/>	<input type="checkbox"/>
Other	<input type="checkbox"/>	<input type="checkbox"/>	<input type="checkbox"/>	<input type="checkbox"/>	<input type="checkbox"/>	<input type="checkbox"/>



Please write in the other language below (e.g. Punjabi, BSL).

--	--	--	--	--	--	--	--	--	--	--	--	--	--	--	--	--	--	--	--

## 10 How do you usually travel to your main place of work or study (including school)?

◆ ✓ one box only - the box for the longest part, by distance, of your usual journey to work or study.

- Underground, tube, metro or light rail  Train  
 Passenger in a car or van  Motor cycle, scooter or moped  
 Bus, minibus or coach (public or private)  Bicycle  
 Taxi or minicab  On foot  
 Driving a car or van  Other

# Person 1 – continued

**11 Do you experience negative discrimination on any of the following grounds?**

◆ Tick all boxes that apply

- Accent     Age  
 Colour     Disability  
 Ethnicity     Gender  
 Language     Nationality  
 Religion/Faith/Belief  
 Sexual Orientation

**12 What religion, religious denomination or body do you belong to?**

- None  
 Church of Scotland  
 Roman Catholic  
 Other Christian, *please write in*

--	--	--	--	--	--	--	--	--	--	--	--	--	--	--	--	--	--	--	--

--	--	--	--	--	--	--	--	--	--	--	--	--	--	--	--	--	--	--	--

- Buddhist     Jewish  
 Hindu     Muslim  
 Sikh  
 Another Religion, *please write in*

--	--	--	--	--	--	--	--	--	--	--	--	--	--	--	--	--	--	--	--

--	--	--	--	--	--	--	--	--	--	--	--	--	--	--	--	--	--	--	--

**13 What religion, religious denomination or body were you brought up in?**

- None  
 Church of Scotland  
 Roman Catholic  
 Other Christian, *please write in*

--	--	--	--	--	--	--	--	--	--	--	--	--	--	--	--	--	--	--	--

--	--	--	--	--	--	--	--	--	--	--	--	--	--	--	--	--	--	--	--

- Buddhist     Jewish  
 Hindu     Muslim  
 Sikh  
 Another Religion, *please write in*

--	--	--	--	--	--	--	--	--	--	--	--	--	--	--	--	--	--	--	--

--	--	--	--	--	--	--	--	--	--	--	--	--	--	--	--	--	--	--	--

**14 What is your ethnic descent?**

◆ Choose one section from A to F, then ✓ the appropriate box to indicate your descent.

**A European descent**

- Scottish     English  
 Irish     Welsh  
 Gypsy, Romany or Traveller  
 Other European descent, *please write in*

--	--	--	--	--	--	--	--	--	--	--	--	--	--	--	--	--	--	--	--

--	--	--	--	--	--	--	--	--	--	--	--	--	--	--	--	--	--	--	--

**B Asian descent**

- Indian     Pakistani  
 Bangladeshi     Chinese  
 Other Asian descent, *please write in*

--	--	--	--	--	--	--	--	--	--	--	--	--	--	--	--	--	--	--	--

--	--	--	--	--	--	--	--	--	--	--	--	--	--	--	--	--	--	--	--

**C Arab or Middle East descent**

- North African     Iraqi  
 Arabian     Kurdish  
 Other descent, *please write in*

--	--	--	--	--	--	--	--	--	--	--	--	--	--	--	--	--	--	--	--

--	--	--	--	--	--	--	--	--	--	--	--	--	--	--	--	--	--	--	--

**D African or Caribbean descent**

- African     Caribbean  
 Other African Descent, *please write in*

--	--	--	--	--	--	--	--	--	--	--	--	--	--	--	--	--	--	--	--

--	--	--	--	--	--	--	--	--	--	--	--	--	--	--	--	--	--	--	--

**E Mixed**

- Any Mixed descent, *please write in*

--	--	--	--	--	--	--	--	--	--	--	--	--	--	--	--	--	--	--	--

--	--	--	--	--	--	--	--	--	--	--	--	--	--	--	--	--	--	--	--

**F Other ethnic descent**

- Other descent, *please write in*

--	--	--	--	--	--	--	--	--	--	--	--	--	--	--	--	--	--	--	--

--	--	--	--	--	--	--	--	--	--	--	--	--	--	--	--	--	--	--	--

**15 What is your country of birth?**

- Scotland  
 England  
 Wales  
 Northern Ireland  
 Republic of Ireland  
 Elsewhere, *please write in the present name of the country*

--	--	--	--	--	--	--	--	--	--	--	--	--	--	--	--	--	--	--	--

--	--	--	--	--	--	--	--	--	--	--	--	--	--	--	--	--	--	--	--

**16 Do you feel confident about going out in the evening in your area?**

- No, never  
 Only when it is light  
 Only with others  
 Yes, always

**17 Which of the following best describes your sexual orientation?**

◆ Only answer this question if you are 16 years old or more

- Heterosexual  
 Lesbian/Gay  
 Bi-sexual  
 Other  
 Prefer not to answer

**18 Do you look after, or give any help or support to family members, friends, neighbours or others because of:**

- long term physical or mental ill-health or disability, or
- problems related to old age?

◆ Do not count anything you do as part of your paid employment

◆ ✓ time spent in a typical week

- No  
 Yes, 1-9 hours a week  
 Yes, 10-19 hours a week  
 Yes, 20-49 hours a week  
 Yes, 50+ hours a week

Now please turn the page

## Person 1 – continued

### 19 Last week, were you doing any of the following:

◆ ✓ ALL boxes which apply

- Part – time employee
- Full – time employee
- Part-time self-employed without employees
- Full-time self-employed without employees
- Full-time self-employed with employees
- Part-time self-employed with employees
- Unemployed
  
- Part-time student
- Full-time student (can also be working – see above)
- At School
  
- Retired
- Looking after home and family
- Permanently sick/disabled
- Other

### 20 Do you live at another address for part of the week or year?

- ◆ Where you stay if you work away from home.
- ◆ Where you stay if you have a holiday home.
- ◆ Where you stay if your parents/guardians are separated
- ◆ Where you stay in your non-term time address

- Yes ➔ Go to 21
- No ➔ Go to 24

### 21 What do you use this address for?

- Work
- Holiday
- Other

### 22 Do you live at this address for part of the week?

- Yes, please write in the number of days a week you live here.
- ➔ Go to 24
- No ➔ Go to 23

### 23 How many weeks a year do you live at this address?

### 24 If you are aged 16 or over ➔ Go to 25

If you are aged 15 and under ➔ Go to 29

### 25 Have you ever worked?

- Yes, *please write in the year you last worked*
- ➔ Go to 26
- No, *have never worked*
- ➔ Go to 29

### 26 Answer the remaining questions for the main job you were doing last week or, if not working last week, your last main job.

◆ Your main job is the job in which you usually work the most hours

### 27 How many hours (to the nearest full hour) a week do (did) you usually work in your main job?

- ◆ Give average for last four weeks. Number of hours worked a week

### 28 What is (was) the full title of your main job?

- ◆ For example, PRIMARY SCHOOL TEACHER, CAR MECHANIC, TELEVISION SERVICE ENGINEER, and BENEFITS ASSISTANT.
- ◆ Civil Servants, Local Government Officers – give job title not grade or pay band.


### 29 Thank you for completing this form. Please now complete the 'Your Views' questionnaire to tell us what you think about the form and return them both to us in the freepost envelope provided.

# Your Views

◆ Please help us by giving us your views on the questions.

## 1 Were you happy answering these questions?

◆ Indicate how you felt about these question by ticking the appropriate box.



1 What is you sex? .....	<input type="checkbox"/>	<input type="checkbox"/>	<input type="checkbox"/>	<input type="checkbox"/>	<input type="checkbox"/>
2 What is your age? .....	<input type="checkbox"/>	<input type="checkbox"/>	<input type="checkbox"/>	<input type="checkbox"/>	<input type="checkbox"/>
3 What is your postcode?.....	<input type="checkbox"/>	<input type="checkbox"/>	<input type="checkbox"/>	<input type="checkbox"/>	<input type="checkbox"/>
4 Access to land.....	<input type="checkbox"/>	<input type="checkbox"/>	<input type="checkbox"/>	<input type="checkbox"/>	<input type="checkbox"/>
5 Type of accommodation.....	<input type="checkbox"/>	<input type="checkbox"/>	<input type="checkbox"/>	<input type="checkbox"/>	<input type="checkbox"/>
6 What is you marital status?.....	<input type="checkbox"/>	<input type="checkbox"/>	<input type="checkbox"/>	<input type="checkbox"/>	<input type="checkbox"/>
7 Health over last twelve months.....	<input type="checkbox"/>	<input type="checkbox"/>	<input type="checkbox"/>	<input type="checkbox"/>	<input type="checkbox"/>
8 Physical or Mental health problems.....	<input type="checkbox"/>	<input type="checkbox"/>	<input type="checkbox"/>	<input type="checkbox"/>	<input type="checkbox"/>
9 Main Languages.....	<input type="checkbox"/>	<input type="checkbox"/>	<input type="checkbox"/>	<input type="checkbox"/>	<input type="checkbox"/>
10 Travel to work or study.....	<input type="checkbox"/>	<input type="checkbox"/>	<input type="checkbox"/>	<input type="checkbox"/>	<input type="checkbox"/>
11 Experience of discrimination.....	<input type="checkbox"/>	<input type="checkbox"/>	<input type="checkbox"/>	<input type="checkbox"/>	<input type="checkbox"/>
12 Current Religion.....	<input type="checkbox"/>	<input type="checkbox"/>	<input type="checkbox"/>	<input type="checkbox"/>	<input type="checkbox"/>
13 Religion of upbringing.....	<input type="checkbox"/>	<input type="checkbox"/>	<input type="checkbox"/>	<input type="checkbox"/>	<input type="checkbox"/>
14 Ethnic Descent.....	<input type="checkbox"/>	<input type="checkbox"/>	<input type="checkbox"/>	<input type="checkbox"/>	<input type="checkbox"/>
15 Country of Birth.....	<input type="checkbox"/>	<input type="checkbox"/>	<input type="checkbox"/>	<input type="checkbox"/>	<input type="checkbox"/>
16 Confidence going out in evenings.....	<input type="checkbox"/>	<input type="checkbox"/>	<input type="checkbox"/>	<input type="checkbox"/>	<input type="checkbox"/>
17 Sexual Orientation.....	<input type="checkbox"/>	<input type="checkbox"/>	<input type="checkbox"/>	<input type="checkbox"/>	<input type="checkbox"/>
18 Hours caring for others.....	<input type="checkbox"/>	<input type="checkbox"/>	<input type="checkbox"/>	<input type="checkbox"/>	<input type="checkbox"/>
19 Employment Status.....	<input type="checkbox"/>	<input type="checkbox"/>	<input type="checkbox"/>	<input type="checkbox"/>	<input type="checkbox"/>
20 Do you live at another address?.....	<input type="checkbox"/>	<input type="checkbox"/>	<input type="checkbox"/>	<input type="checkbox"/>	<input type="checkbox"/>
21 What do you use this address for?.....	<input type="checkbox"/>	<input type="checkbox"/>	<input type="checkbox"/>	<input type="checkbox"/>	<input type="checkbox"/>
22 Number of days a week at this address.....	<input type="checkbox"/>	<input type="checkbox"/>	<input type="checkbox"/>	<input type="checkbox"/>	<input type="checkbox"/>
23 Number of weeks a year at this address.....	<input type="checkbox"/>	<input type="checkbox"/>	<input type="checkbox"/>	<input type="checkbox"/>	<input type="checkbox"/>
25 Have you ever worked?.....	<input type="checkbox"/>	<input type="checkbox"/>	<input type="checkbox"/>	<input type="checkbox"/>	<input type="checkbox"/>
27 Working hours a week.....	<input type="checkbox"/>	<input type="checkbox"/>	<input type="checkbox"/>	<input type="checkbox"/>	<input type="checkbox"/>
28 Title of main job.....	<input type="checkbox"/>	<input type="checkbox"/>	<input type="checkbox"/>	<input type="checkbox"/>	<input type="checkbox"/>

