

ANNEX C Frequency Counts for Census Test questions

Annex C: frequency counts for 2006 Test questions

Introduction

The questions in the Test were of various types, and are presented accordingly. Unless otherwise stated, a single tick was required. The responses to these questions are presented as a simple frequency count and bar chart, with the percentages adding up to 100%. An “error” response means that more than one box was ticked, although in some of these cases the original response was crossed out and replaced by another - the processing system was unable to distinguish these cases.

Multi-tick questions are presented in a similar way, but since it is possible for a respondent to legitimately tick more than one box, the percentages will add up to more than 100% and there is no “error” category. A frequency count is also given of the number of ticks for each of these questions, but again care should be taken with interpreting these results as some apparent multi-ticks may be the result of a crossing-out.

Questions with write-in responses are only included here when they required a numeric response. In some cases responses are grouped together to reduce the number of categories. One question, person question 14 “how many children have you given birth to?”, combines numeric and tick-box responses as it has a tick-box marked “none”. A value of 0 has been assumed if this box is ticked, unless a higher number was written in in which case it has been considered as an error.

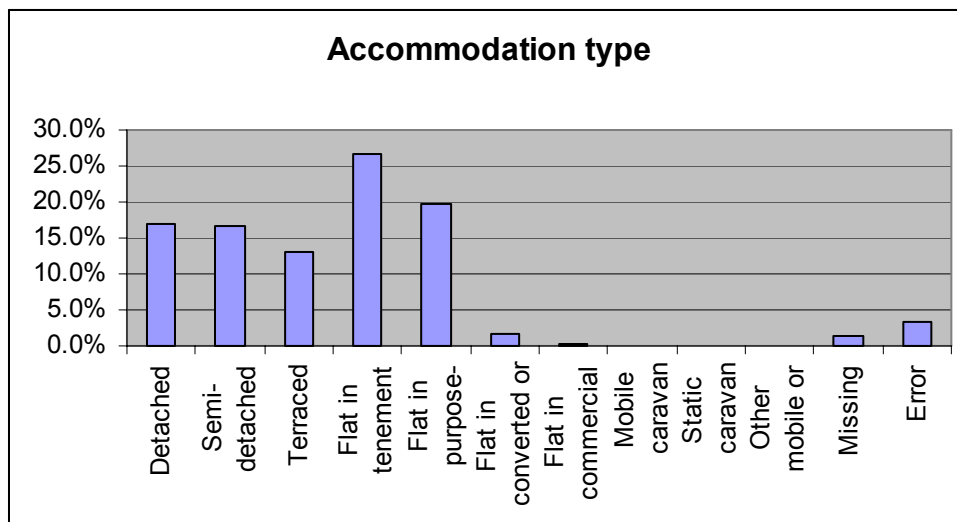
It should also be noted that there are a number of filter questions in the questionnaire, and these have been taken into account when calculating the total number of responses expected for each question. The total frequency therefore varies from question to question.

Household questions

H1. What type of accommodation does your household occupy?

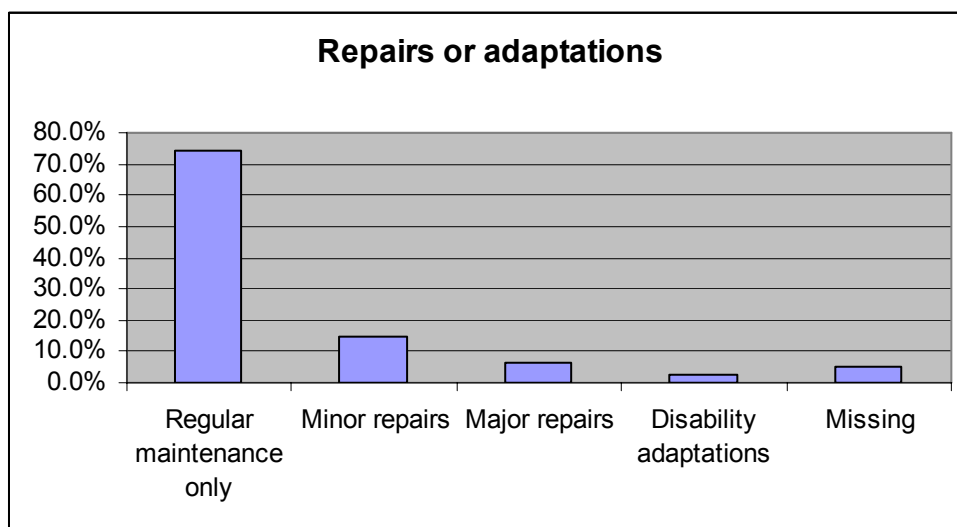
Response	Frequency	%
Detached	4042	17.0%
Semi-detached	3979	16.7%
Terraced	3125	13.1%
Flat in tenement	6358	26.7%
Flat in purpose-built block	4655	19.6%
Flat in converted or shared house	420	1.8%
Flat in commercial building	52	0.2%
Mobile caravan	10	0.0%
Static caravan	28	0.1%
Other mobile or temporary	9	0.0%
Missing	303	1.3%
Error	789	3.3%

ANNEX C Frequency Counts for Census Test questions



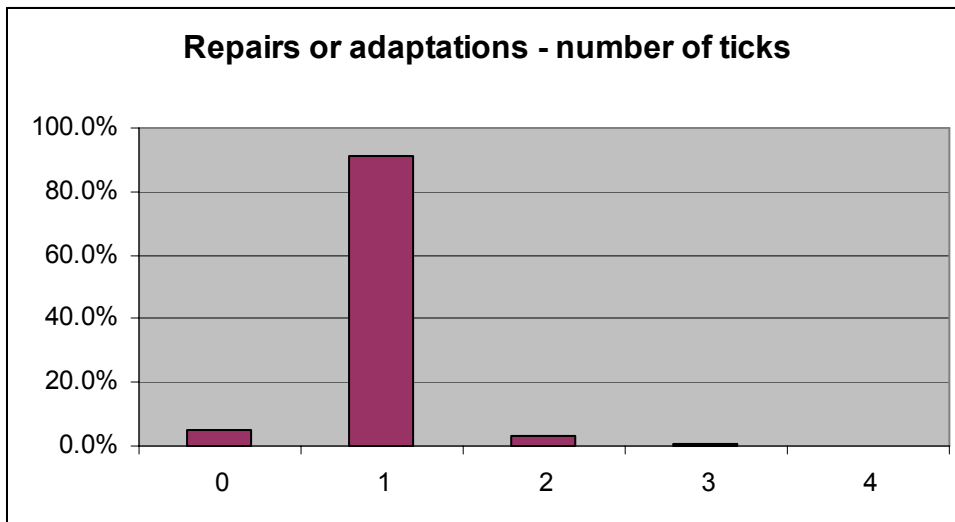
H2. Does your house need and repairs or adaptations? (Multi-tick question)

Response	Frequency	%
Regular maintenance only	17708	74.5%
Minor repairs	3504	14.7%
Major repairs	1592	6.7%
Disability adaptations	684	2.9%
Missing	1244	5.2%



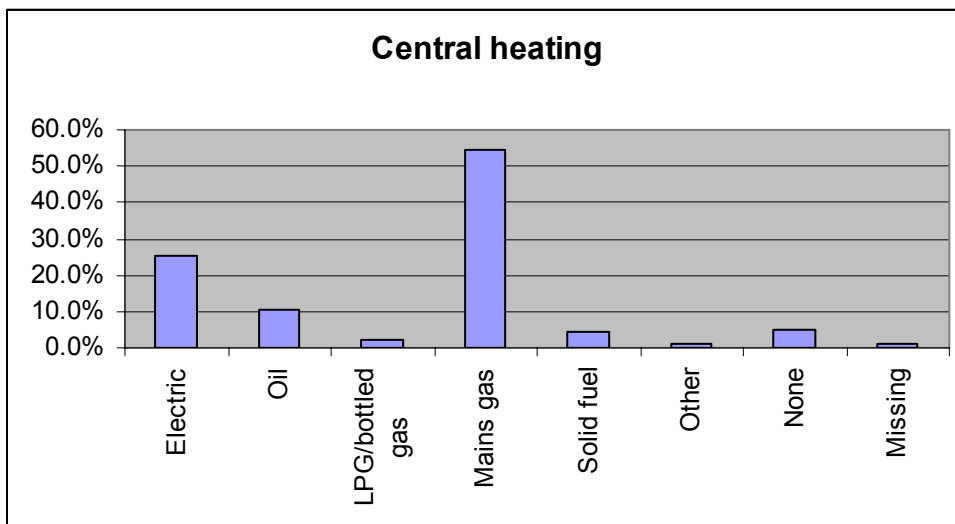
Number of ticks	Frequency	%
0	1244	5.2%
1	21673	91.2%
2	760	3.2%
3	77	0.3%
4	16	0.1%

ANNEX C Frequency Counts for Census Test questions



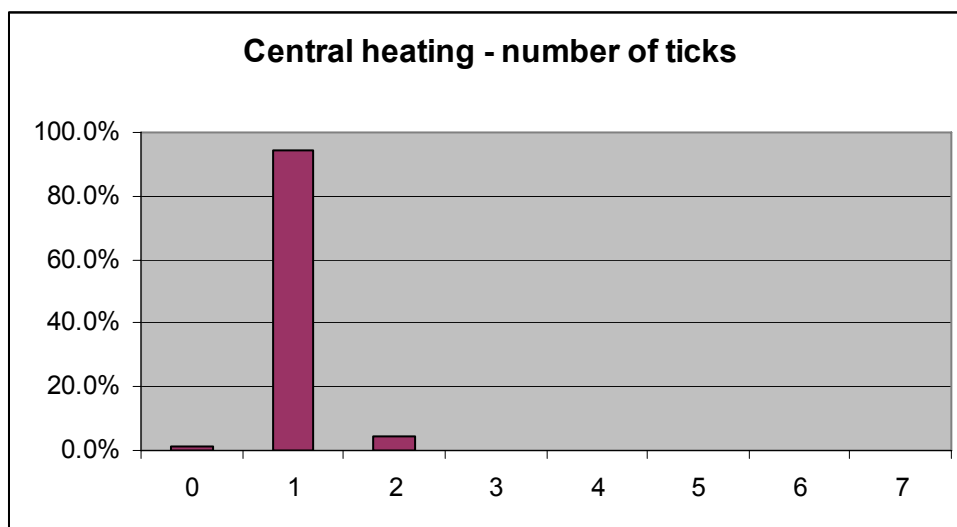
H3. What type of central heating does your household have? (Multi-tick question)

Response	Frequency	%
Electric	6014	25.3%
Oil	2463	10.4%
LPG/bottled gas	585	2.5%
Mains gas	12989	54.6%
Solid fuel	1088	4.6%
Other	238	1.0%
None	1236	5.2%
Missing	306	1.3%



ANNEX C Frequency Counts for Census Test questions

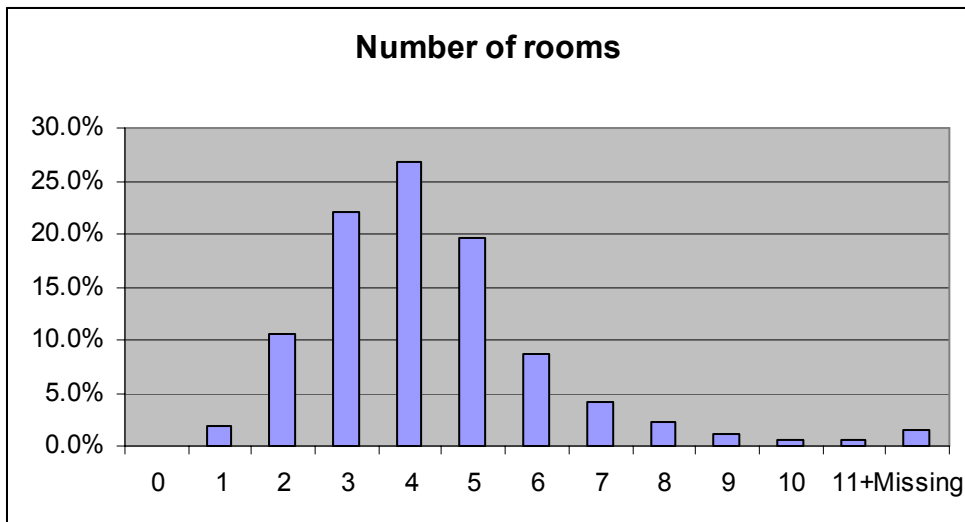
Number of ticks	Frequency	%
0	306	1.3%
1	22360	94.1%
2	1064	4.5%
3	38	0.2%
4	1	0.0%
5	0	0.0%
6	0	0.0%
7	1	0.0%



H4. How many rooms do you have for use only by your household? (Write-in question)

Response	Frequency	%
0	6	0.0%
1	461	1.9%
2	2516	10.6%
3	5263	22.1%
4	6367	26.8%
5	4678	19.7%
6	2075	8.7%
7	975	4.1%
8	543	2.3%
9	264	1.1%
10	138	0.6%
11+	135	0.6%
Missing	349	1.5%

ANNEX C Frequency Counts for Census Test questions



H5. Is your household's accommodation self-contained?

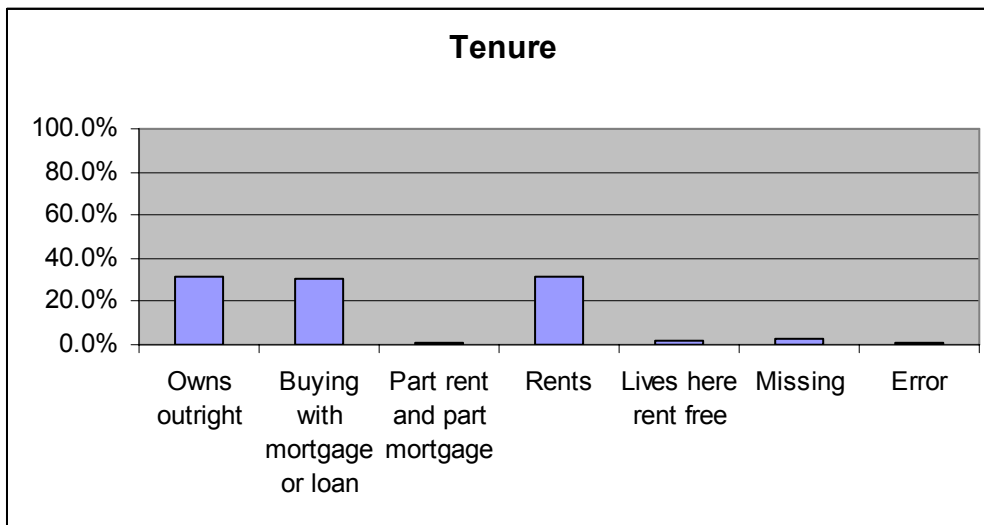
Response	Frequency	%
Yes	22978	96.7%
No	347	1.5%
Missing	401	1.7%
Error	44	0.2%



H6. Does your household own or rent the accommodation?

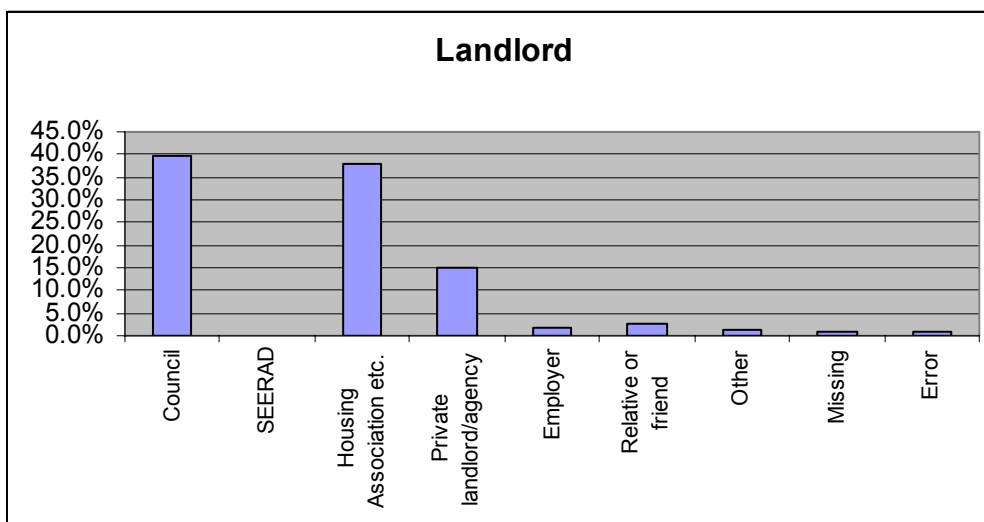
Response	Frequency	%
Owns outright	7417	31.2%
Buying with mortgage or loan	7341	30.9%
Part rent and part mortgage	181	0.8%
Rents	7385	31.1%
Lives here rent free	490	2.1%
Missing	635	2.7%
Error	321	1.4%

ANNEX C Frequency Counts for Census Test questions



H7. Who is your landlord?

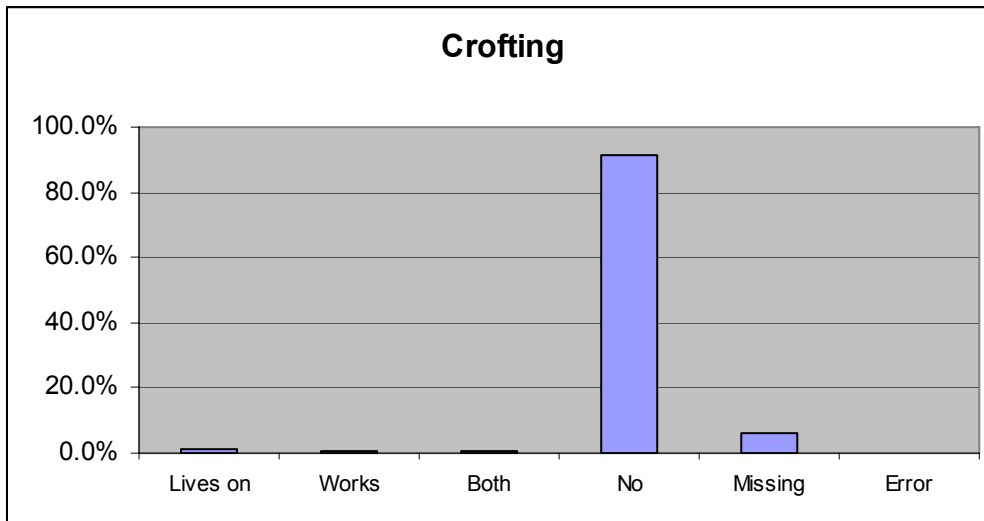
Response	Frequency	%
Council	3205	39.8%
SEERAD	1	0.0%
Housing Association etc.	3047	37.8%
Private landlord/agency	1211	15.0%
Employer	150	1.9%
Relative or friend	226	2.8%
Other	90	1.1%
Missing	61	0.8%
Error	65	0.8%



ANNEX C Frequency Counts for Census Test questions

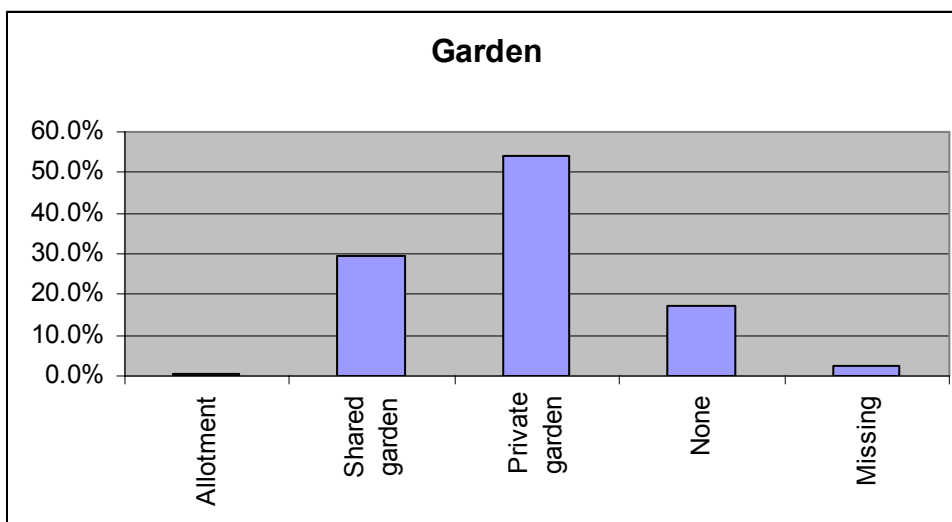
H8. Does your household live on or work a registered croft?

Response	Frequency	%
Lives on	256	1.1%
Works	99	0.4%
Both	121	0.5%
No	21731	91.4%
Missing	1497	6.3%
Error	66	0.3%



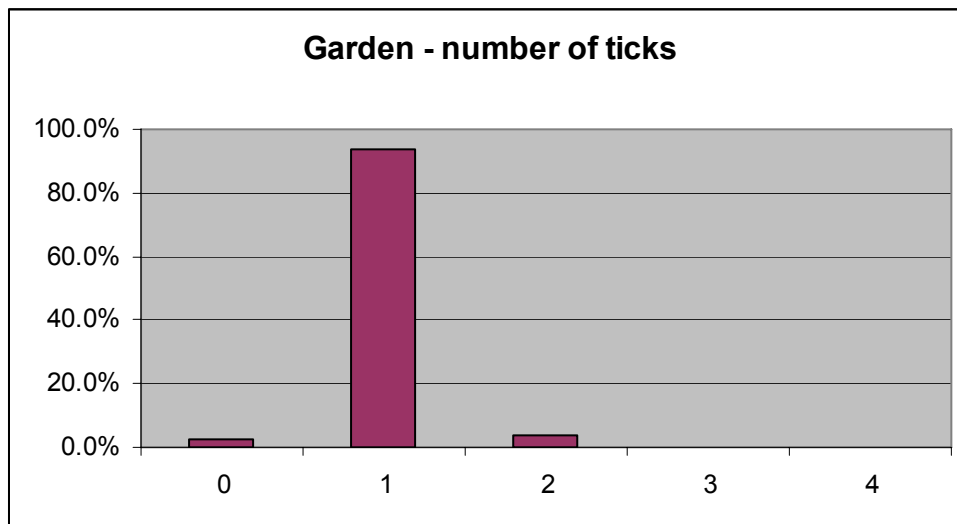
H9. Does your household have access to? (Multi-tick question)

Response	Frequency	%
Allotment	114	0.5%
Shared garden	6969	29.3%
Private garden	12806	53.9%
None	4133	17.4%
Missing	638	2.7%



ANNEX C Frequency Counts for Census Test questions

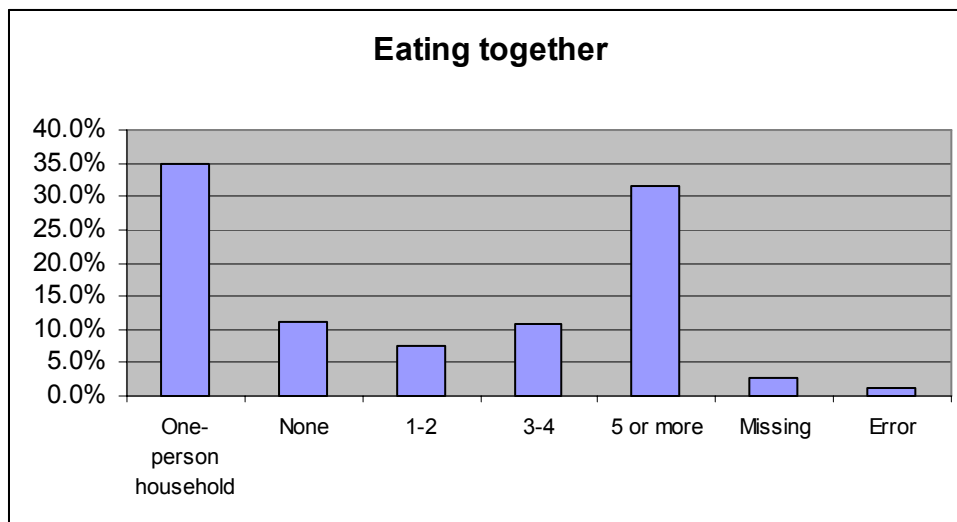
Number of ticks	Frequency	%
0	638	2.7%
1	22263	93.7%
2	849	3.6%
3	19	0.1%
4	1	0.0%



H10. How many times last week did your household sit down at a table and eat a meal together?

Response	Frequency	%
One-person household	8304	34.9%
None	2655	11.2%
1-2	1797	7.6%
3-4	2546	10.7%
5 or more	7541	31.7%
Missing	657	2.8%
Error	270	1.1%

ANNEX C Frequency Counts for Census Test questions



H11. What is your household's total income from all sources?

Details of responses to this question are given in section 4.3.1 of the main body of the report.

Person questions

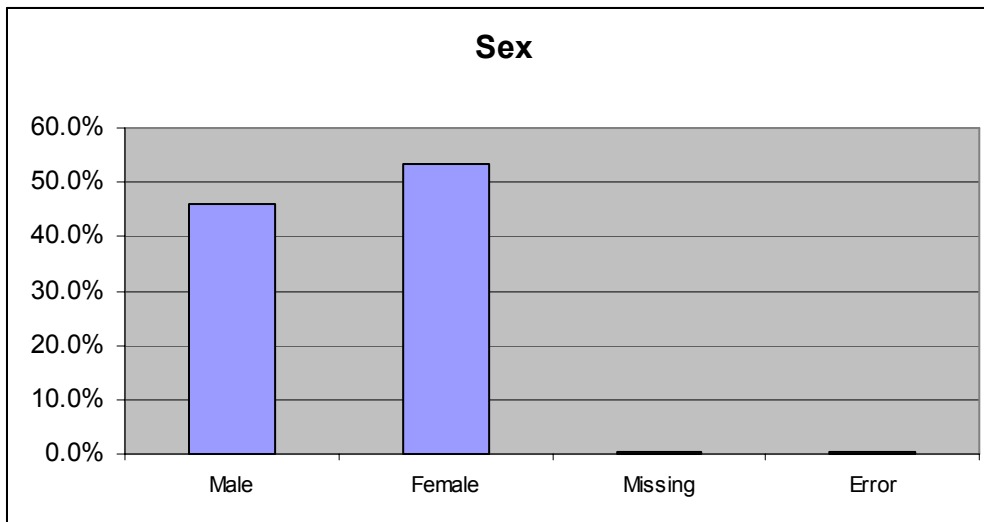
1. What is your name?

Given the number of possible answers to this question, details of frequencies are not given here. Non-response information is given in section 4.3.2 of the main body of the report.

2. What is your sex?

Response	Frequency	%
Male	21784	46.2%
Female	25150	53.3%
Missing	145	0.3%
Error	88	0.2%

ANNEX C Frequency Counts for Census Test questions

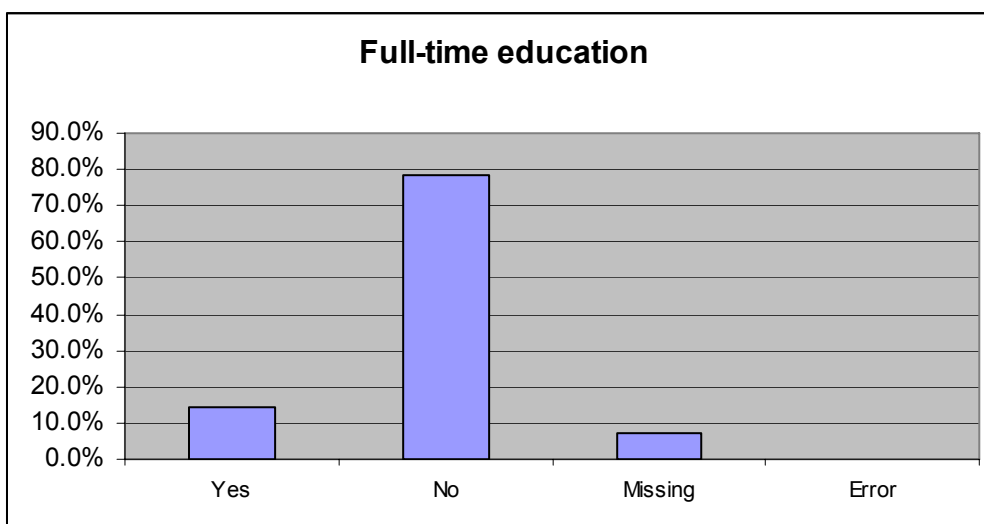


3. What is your date of birth?

Given the number of possible answers to this question, details of frequencies are not given here. Non-response information is given in section 4.3.2 of the main body of the report.

4. Are you a student or schoolchild in full-time education?

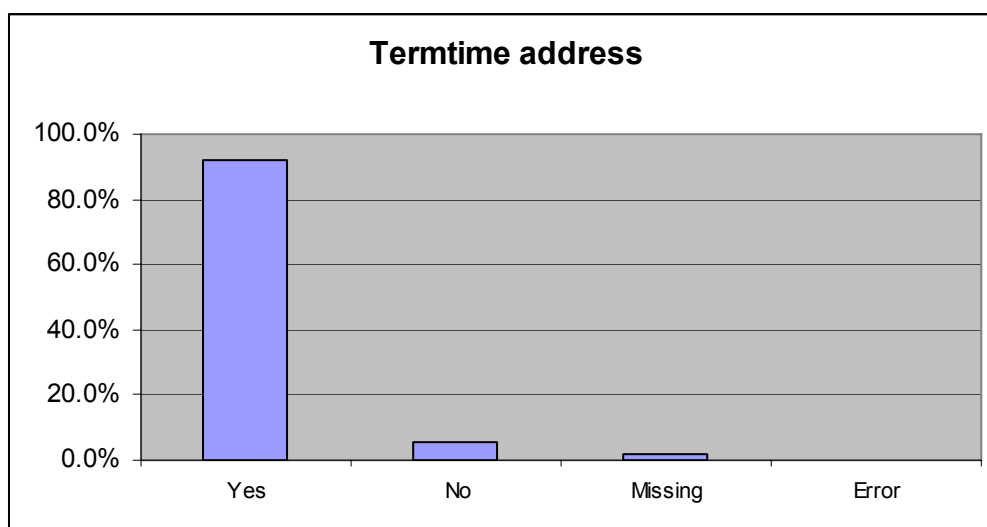
Response	Frequency	%
Yes	6857	14.5%
No	36942	78.3%
Missing	3258	6.9%
Error	110	0.2%



ANNEX C Frequency Counts for Census Test questions

5. Do you live at the address shown on the front of this form during the school, college or university term?

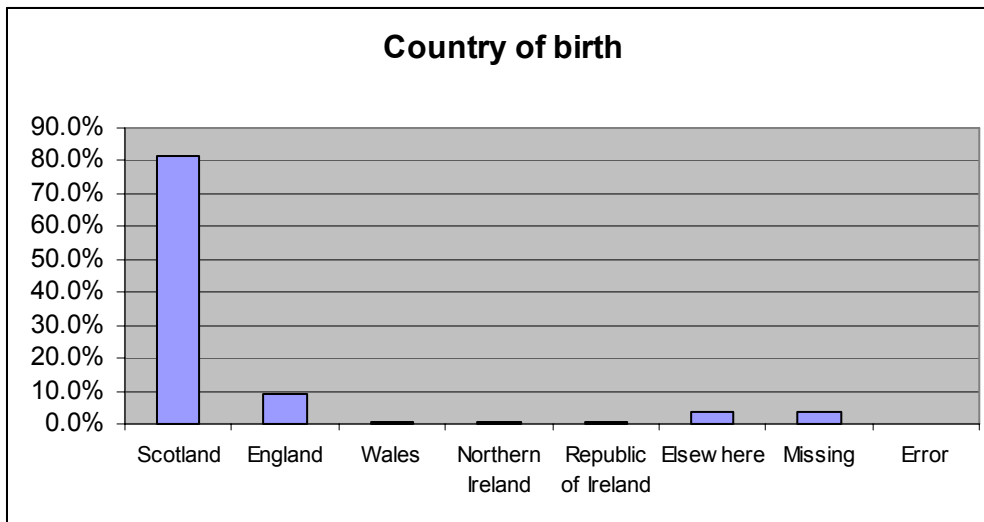
Response	Frequency	%
Yes	6326	92.3%
No	377	5.5%
Missing	138	2.0%
Error	16	0.2%



6. What is your country of birth?

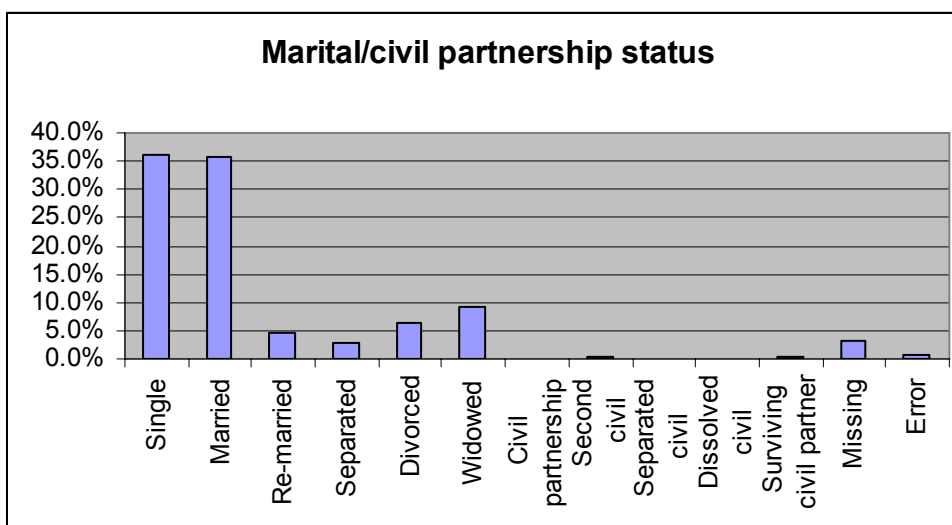
Response	Frequency	%
Scotland	37945	81.6%
England	4336	9.3%
Wales	155	0.3%
Northern Ireland	320	0.7%
Republic of Ireland	362	0.8%
Elsewhere	1612	3.5%
Missing	1735	3.7%
Error	29	0.1%

ANNEX C Frequency Counts for Census Test questions



7. What is your marital or civil partnership status?

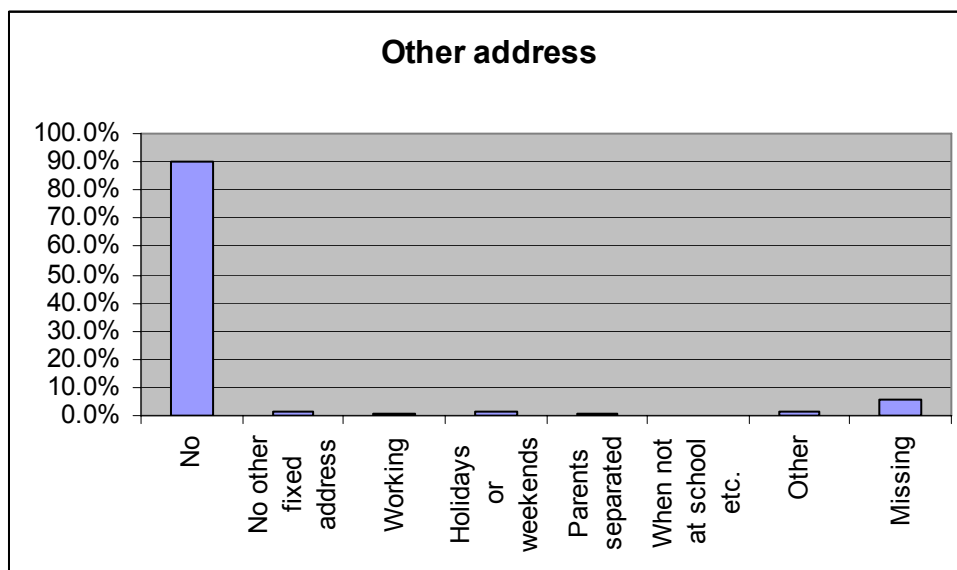
Response	Frequency	%
Single	16786	36.1%
Married (first marriage)	16696	35.9%
Re-married	2114	4.5%
Separated	1282	2.8%
Divorced	2998	6.4%
Widowed	4298	9.2%
In a same-sex civil partnership	69	0.1%
Second or subsequent civil partnership	203	0.4%
Separated from a civil partner	29	0.1%
Dissolved from a civil partnership	67	0.1%
Surviving civil partner	137	0.3%
Missing	1511	3.2%
Error	304	0.7%



ANNEX C Frequency Counts for Census Test questions

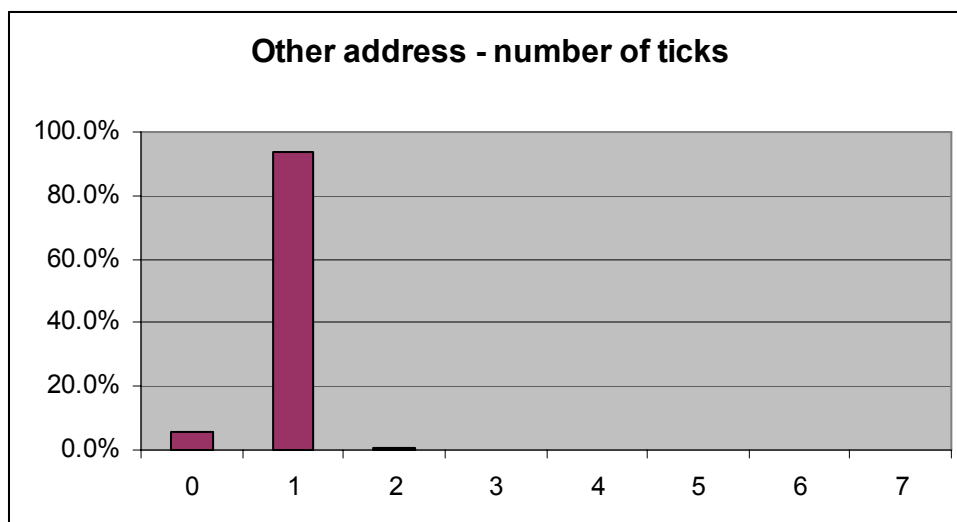
8. Do you live at other addresses for part of the week or year? (Multi-tick question)

Response	Frequency	%
No	41884	90.1%
No other fixed address	660	1.4%
Working	444	1.0%
Holidays or weekends	549	1.2%
Parents separated	173	0.4%
When not at school etc.	40	0.1%
Other	536	1.2%
Missing	2559	5.5%



Number of ticks	Frequency	%
0	2559	5.5%
1	43649	93.9%
2	249	0.5%
3	27	0.1%
4	3	0.0%
5	1	0.0%
6	1	0.0%
7	5	0.0%

ANNEX C Frequency Counts for Census Test questions



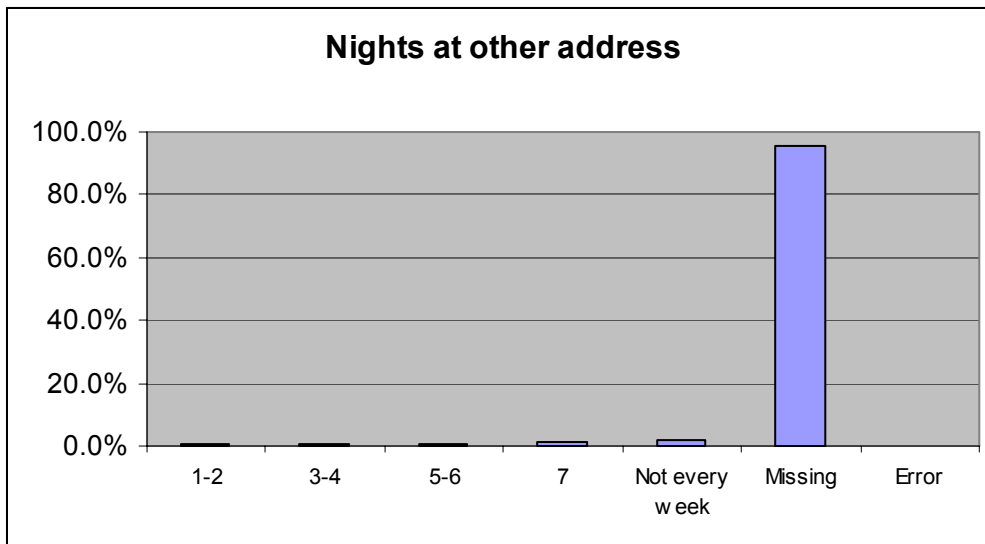
9. What is your other address?

Given the number of possible answers to this question, details of frequencies are not given here. Non-response information is given in section 4.3.2 of the main body of the report.

10. On average, how many nights a week do you stay at this other address?

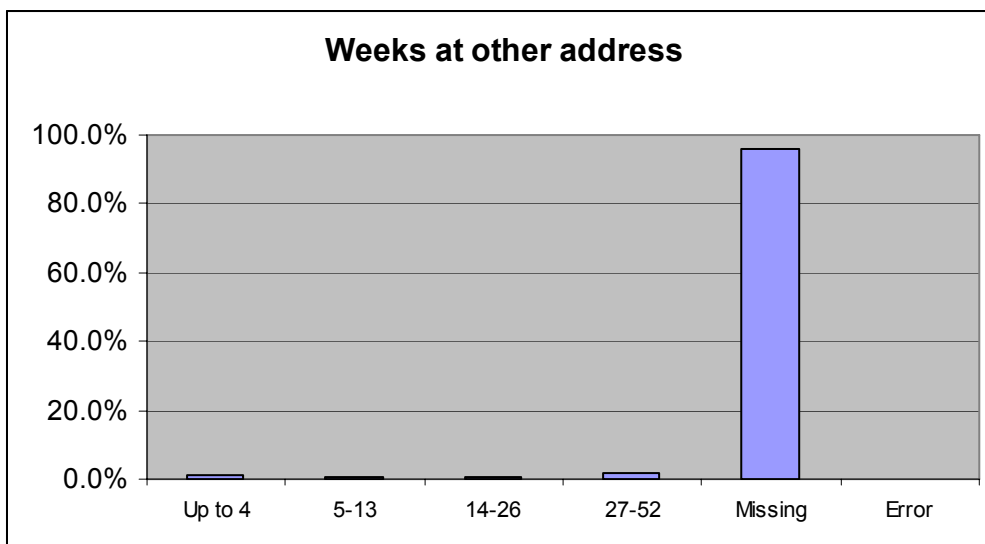
Response	Frequency	%
1-2	196	0.4%
3-4	195	0.4%
5-6	182	0.4%
7	647	1.5%
Not every week	755	1.7%
Missing	41897	95.4%
Error	63	0.1%

ANNEX C Frequency Counts for Census Test questions



11. How many nights in the last 12 months did you stay at this other address?

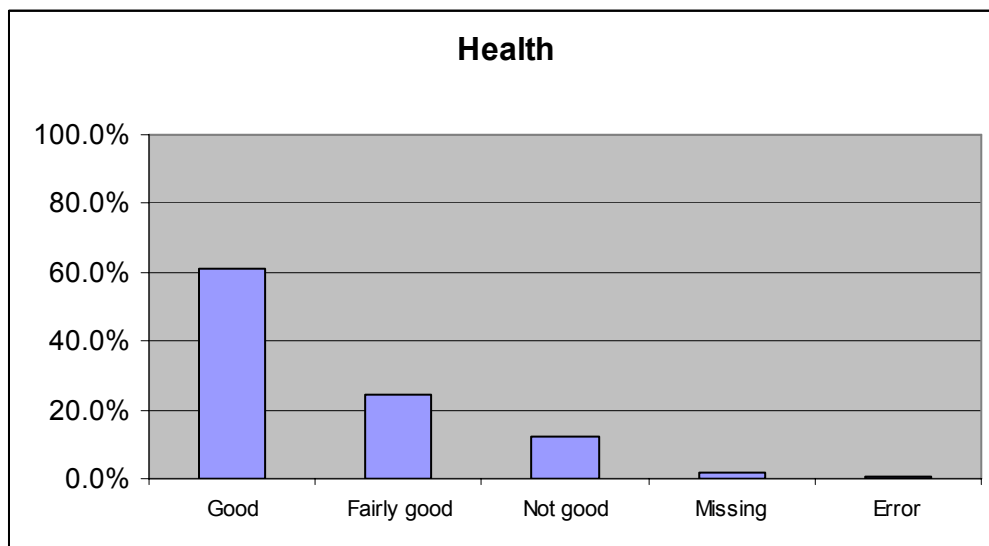
Response	Frequency	%
Up to 4	417	0.9%
5-13	347	0.8%
14-26	275	0.6%
27-52	654	1.5%
Missing	42215	96.1%
Error	27	0.1%



ANNEX C Frequency Counts for Census Test questions

12. Over the last twelve months would you say your health has on the whole been?

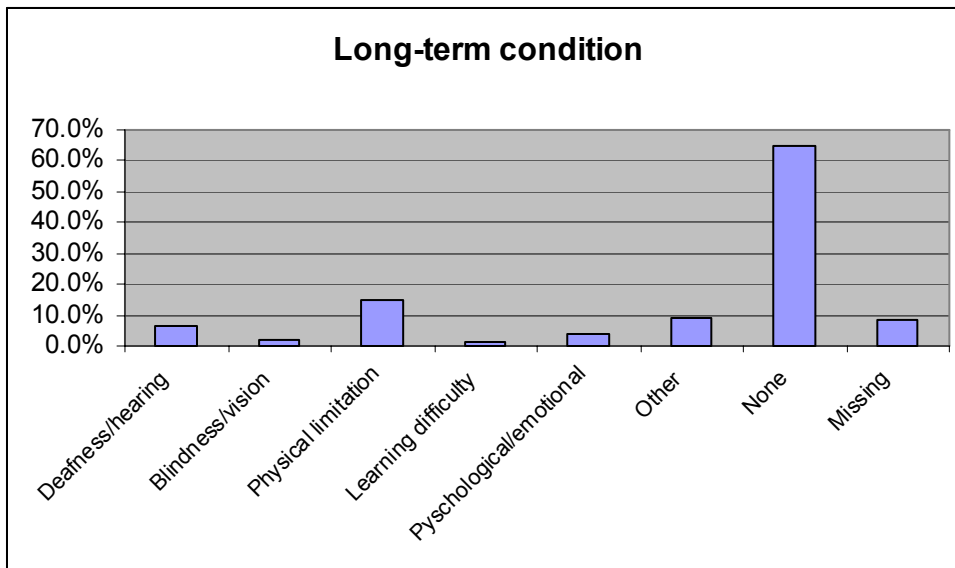
Response	Frequency	%
Good	28406	61.1%
Fairly good	11421	24.6%
Not good	5646	12.1%
Missing	827	1.8%
Error	194	0.4%



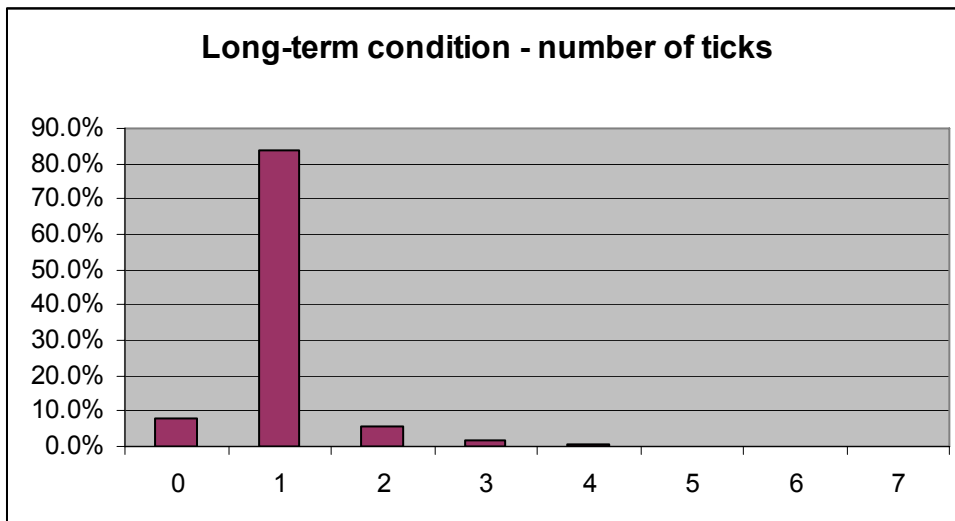
13. Do you have any of the following conditions lasting 12 months or more? (Multi-tick question)

Response	Frequency	%
Deafness/hearing	2872	6.2%
Blindness/vision	895	1.9%
Physical limitation	6988	15.0%
Learning difficulty	589	1.3%
Psychological/emotional	1798	3.9%
Other	4127	8.9%
None	30281	65.1%
Missing	3806	8.2%

ANNEX C Frequency Counts for Census Test questions



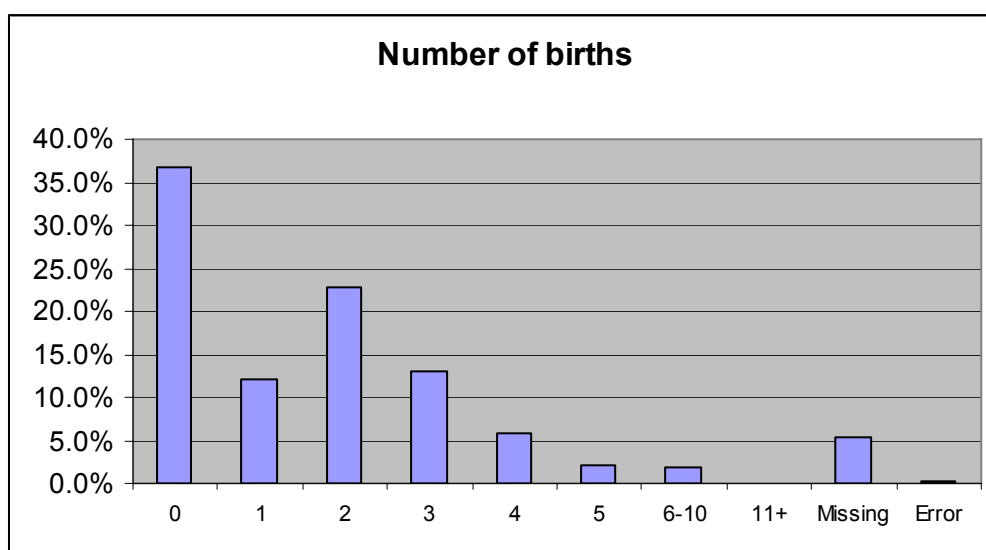
Number of ticks	Frequency	%
0	3806	8.2%
1	39015	83.9%
2	2746	5.9%
3	746	1.6%
4	141	0.3%
5	15	0.0%
6	9	0.0%
7	16	0.0%



ANNEX C Frequency Counts for Census Test questions

14. How many children have you given birth to? (Write-in question)

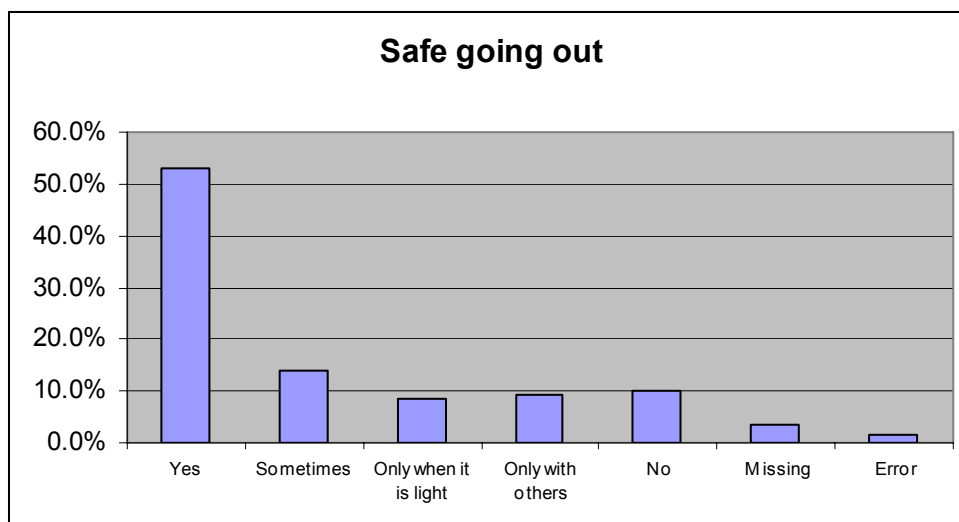
Response	Frequency	%
0	9194	36.7%
1	3051	12.2%
2	5730	22.9%
3	3234	12.9%
4	1428	5.7%
5	542	2.2%
6-10	487	1.9%
11+	8	0.0%
Missing	1327	5.3%
Error	31	0.1%



15. Do you feel safe going out in the evening in your area?

Response	Frequency	%
Yes	24671	53.1%
Sometimes	6443	13.9%
Only when it is light	3973	8.5%
Only with others	4251	9.1%
No	4750	10.2%
Missing	1682	3.6%
Error	724	1.6%

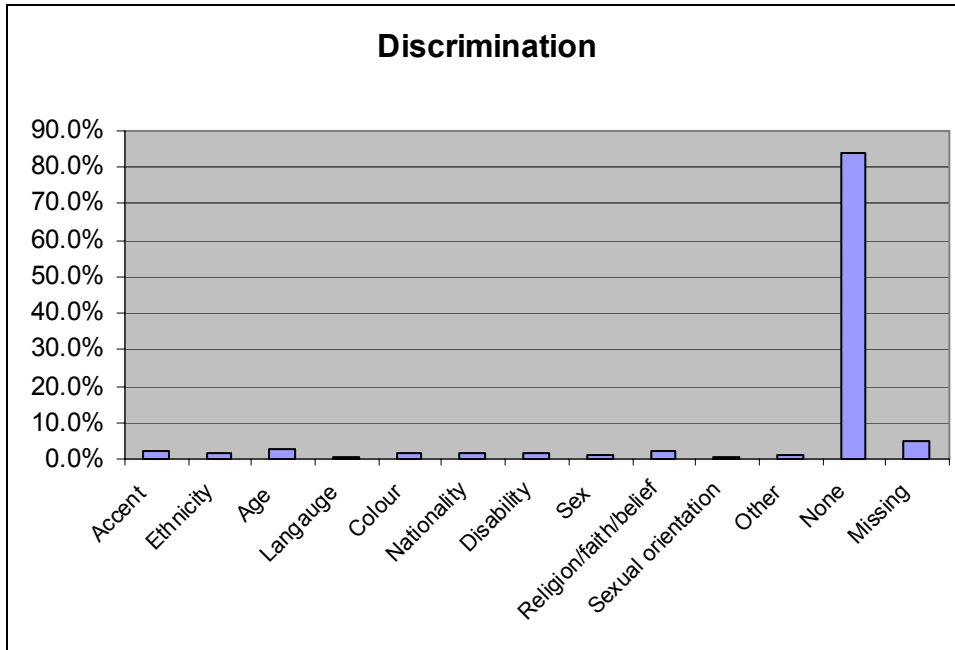
ANNEX C Frequency Counts for Census Test questions



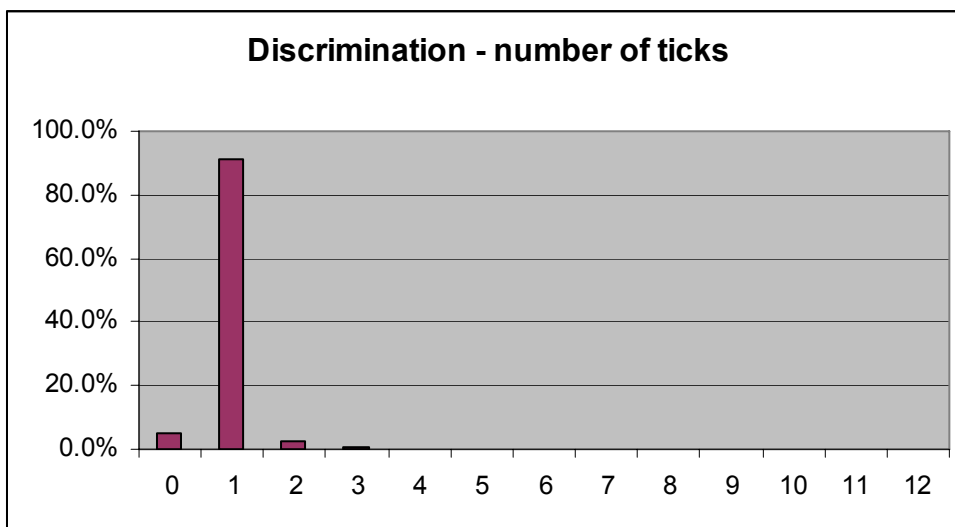
16. Have you experienced negative discrimination on any of the following grounds in the last twelve months? (Multi-tick question)

Response	Frequency	%
Accent	904	1.9%
Ethnicity	651	1.4%
Age	1246	2.7%
Language	270	0.6%
Colour	740	1.6%
Nationality	820	1.8%
Disability	684	1.5%
Sex	575	1.2%
Religion/faith/belief	1016	2.2%
Sexual orientation	216	0.5%
Other	623	1.3%
None	39132	84.2%
Missing	2411	5.2%

ANNEX C Frequency Counts for Census Test questions



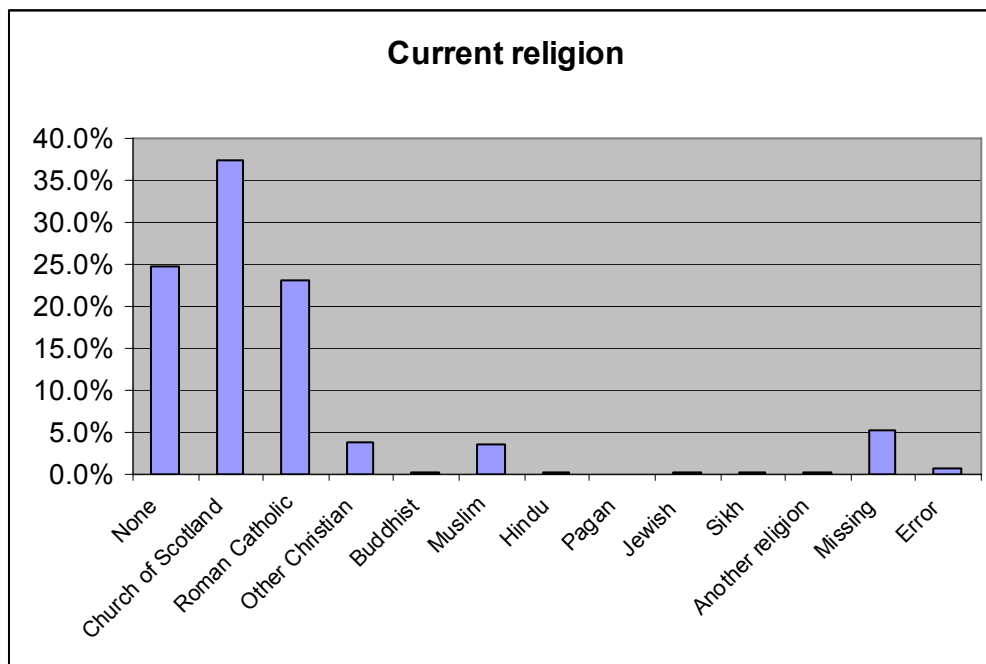
Number of ticks	Frequency	%
0	2411	5.2%
1	42350	91.1%
2	1102	2.4%
3	399	0.9%
4	141	0.3%
5	50	0.1%
6	21	0.0%
7	8	0.0%
8	1	0.0%
9	1	0.0%
10	2	0.0%
11	3	0.0%
12	5	0.0%



ANNEX C Frequency Counts for Census Test questions

17. What is your current religion, denomination, body or faith?

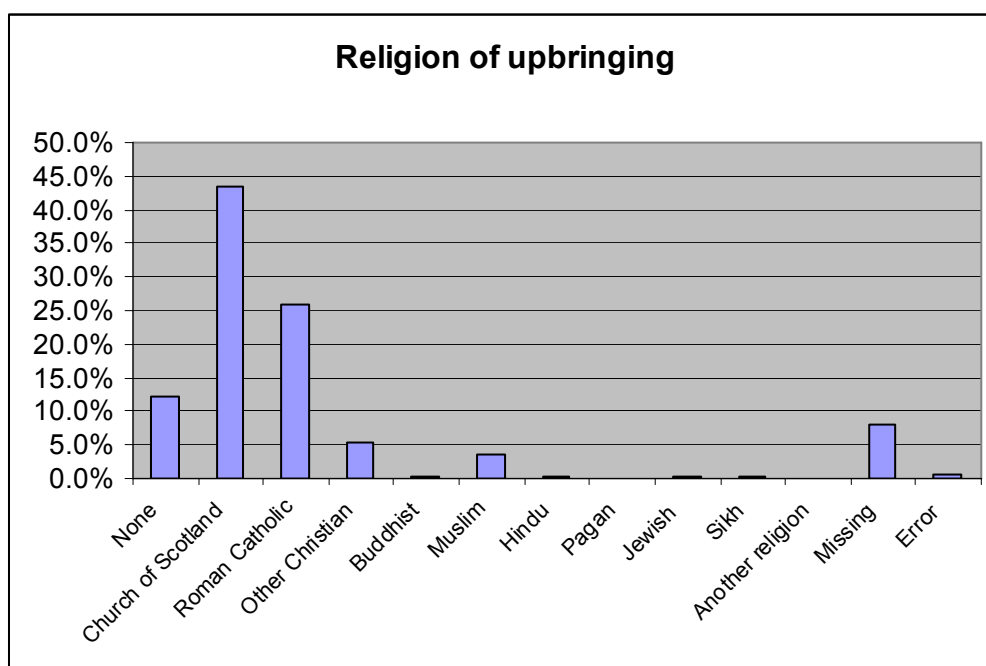
Response	Frequency	%
None	11475	24.7%
Church of Scotland	17393	37.4%
Roman Catholic	10782	23.2%
Other Christian	1822	3.9%
Buddhist	128	0.3%
Muslim	1658	3.6%
Hindu	83	0.2%
Pagan	50	0.1%
Jewish	85	0.2%
Sikh	155	0.3%
Another religion	65	0.1%
Missing	2467	5.3%
Error	331	0.7%



ANNEX C Frequency Counts for Census Test questions

18. What religion, denomination, body or faith were you brought up in?

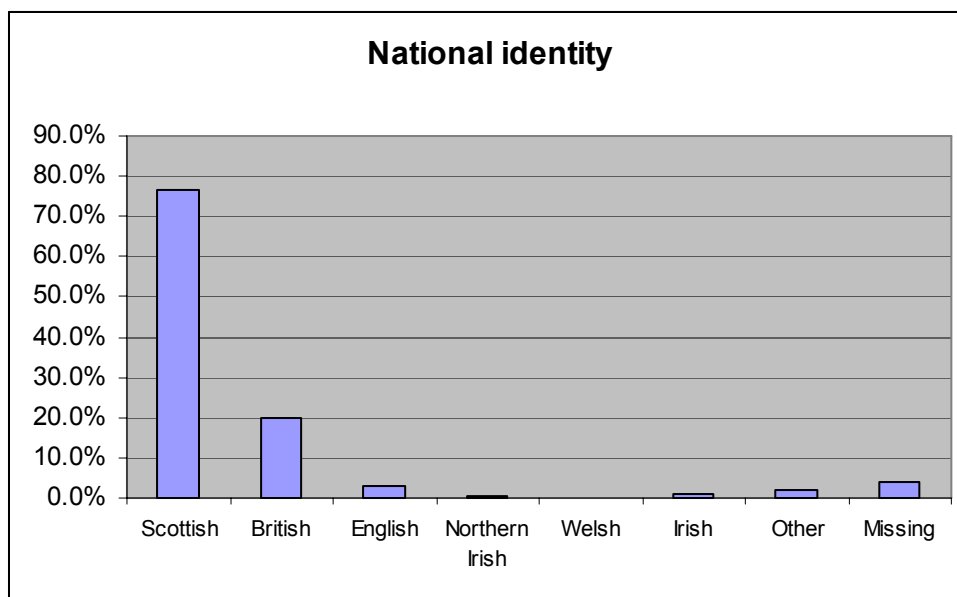
Response	Frequency	%
None	5689	12.2%
Church of Scotland	20240	43.5%
Roman Catholic	12002	25.8%
Other Christian	2452	5.3%
Buddhist	70	0.2%
Muslim	1665	3.6%
Hindu	82	0.2%
Pagan	7	0.0%
Jewish	104	0.2%
Sikh	159	0.3%
Another religion	28	0.1%
Missing	3767	8.1%
Error	229	0.5%



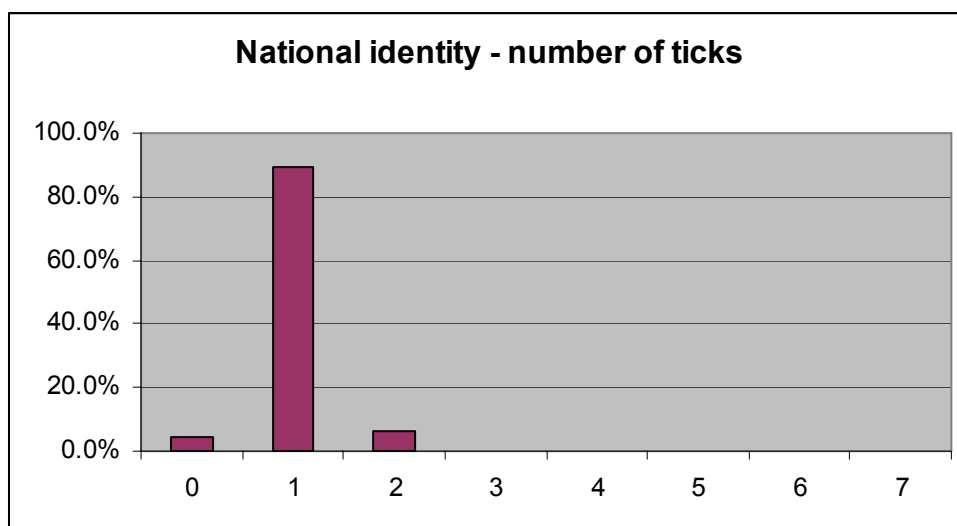
19. What do you consider your national identity to be? (Multi-tick question)

Response	Frequency	%
Scottish	35487	76.3%
British	9276	20.0%
English	1335	2.9%
Northern Irish	161	0.3%
Welsh	88	0.2%
Irish	486	1.0%
Other	980	2.1%
Missing	1927	4.1%

ANNEX C Frequency Counts for Census Test questions



Number of ticks	Frequency	%
0	1927	4.1%
1	41424	89.1%
2	3049	6.6%
3	88	0.2%
4	5	0.0%
5	0	0.0%
6	0	0.0%
7	1	0.0%

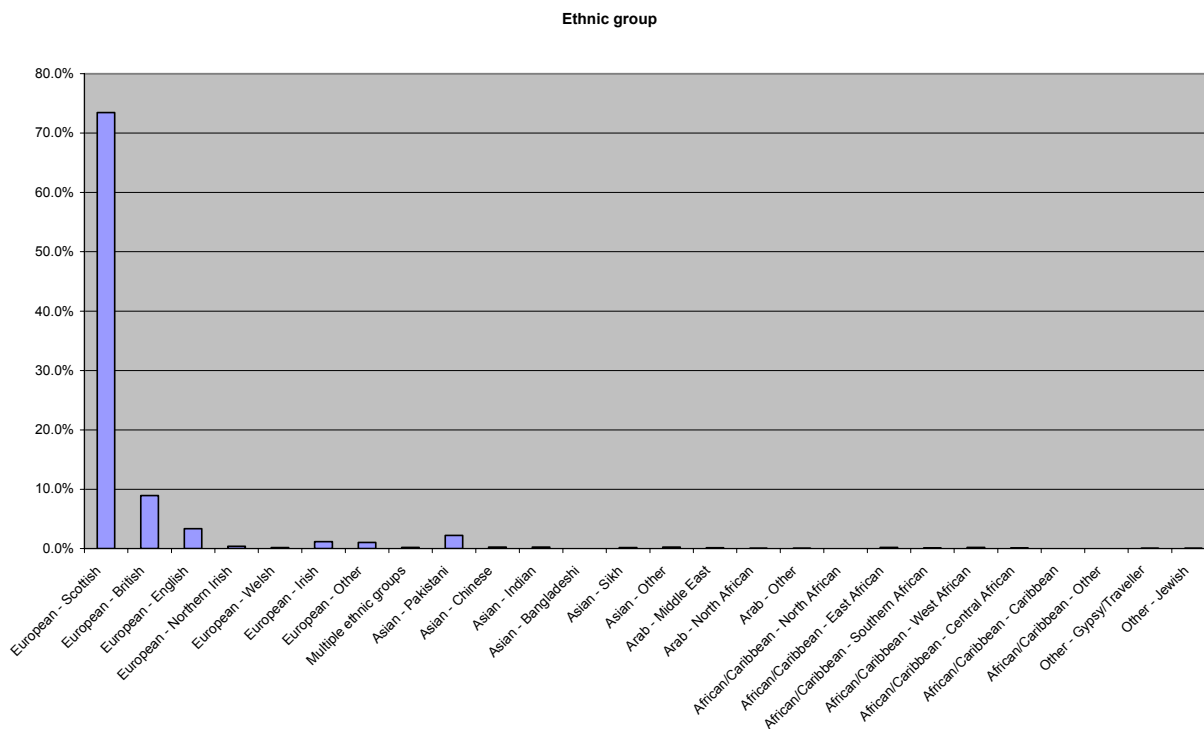


ANNEX C Frequency Counts for Census Test questions

20. What is your ethnic group?

Response	Frequency	%
European - Scottish	34154	73.5%
European - British	4150	8.9%
European - English	1562	3.4%
European - Northern Irish	181	0.4%
European - Welsh	79	0.2%
European - Irish	549	1.2%
European - Other	486	1.0%
Multiple ethnic groups	100	0.2%
Asian - Pakistani	1026	2.2%
Asian - Chinese	115	0.2%
Asian - Indian	110	0.2%
Asian - Bangladeshi	7	0.0%
Asian - Sikh	75	0.2%
Asian - Other	107	0.2%
Arab - Middle East	58	0.1%
Arab - North African	21	0.0%
Arab - Other	12	0.0%
African/Caribbean - North African	5	0.0%
African/Caribbean - East African	99	0.2%
African/Caribbean - Southern African	52	0.1%
African/Caribbean - West African	92	0.2%
African/Caribbean - Central African	43	0.1%
African/Caribbean - Caribbean	8	0.0%
African/Caribbean - Other	2	0.0%
Other - Gypsy/Traveller	21	0.0%
Other - Jewish	21	0.0%
Other - Other	26	0.1%
Missing	2099	4.5%
Error	1234	2.7%

ANNEX C Frequency Counts for Census Test questions

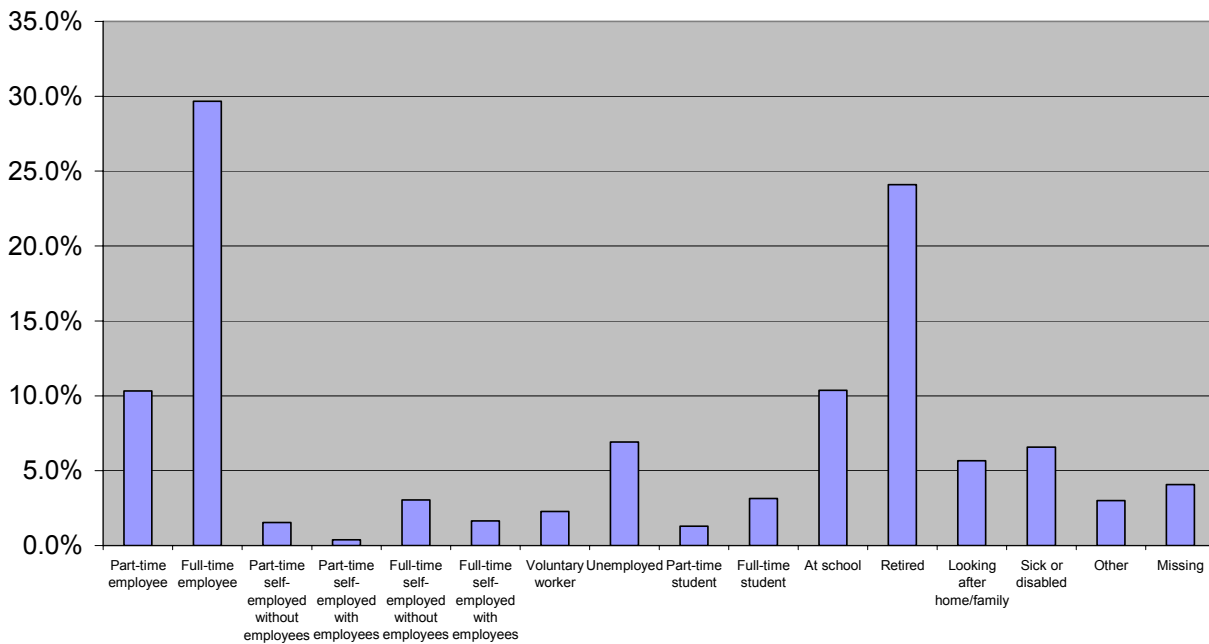


21. Last week, were you any of the following? (Multi-tick question)

Response	Frequency	%
Part-time employee	4801	10.3%
Full-time employee	13796	29.7%
Part-time self-employed without employees	712	1.5%
Part-time self-employed with employees	178	0.4%
Full-time self-employed without employees	1414	3.0%
Full-time self-employed with employees	767	1.6%
Voluntary worker	1058	2.3%
Unemployed	3214	6.9%
Part-time student	596	1.3%
Full-time student	1457	3.1%
At school	4819	10.4%
Retired	11207	24.1%
Looking after home/family	2634	5.7%
Sick or disabled	3052	6.6%
Other	1398	3.0%
Missing	1890	4.1%

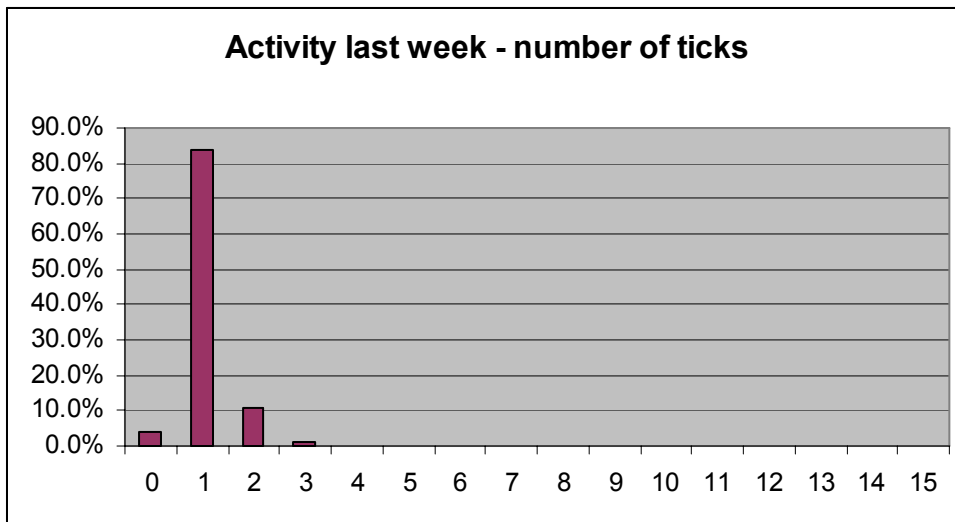
ANNEX C Frequency Counts for Census Test questions

Activity last week



Number of ticks	Frequency	%
0	1890	4.1%
1	38953	83.8%
2	4957	10.7%
3	616	1.3%
4	64	0.1%
5	6	0.0%
6	0	0.0%
7	1	0.0%
8	0	0.0%
9	0	0.0%
10	0	0.0%
11	0	0.0%
12	1	0.0%
13	2	0.0%
14	3	0.0%
15	1	0.0%

ANNEX C Frequency Counts for Census Test questions



22a. Have you ever worked?

Response	Frequency	%
Yes	22084	47.5%
No	7292	15.7%
Missing	17071	36.7%
Error	47	0.1%

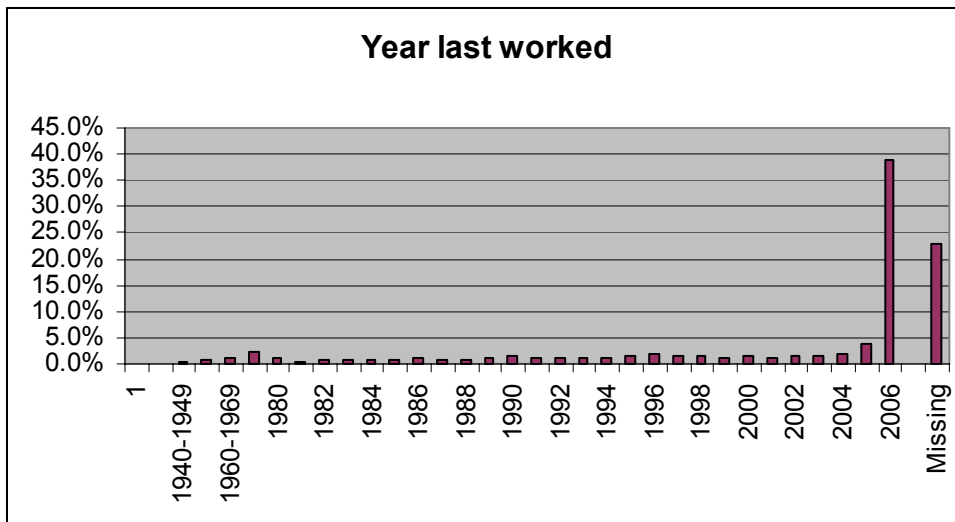


ANNEX C Frequency Counts for Census Test questions

22b. Please write in the year you last worked (write-in question)

Response	Frequency	%
1	1	0.0%
1902-1939	61	0.2%
1940-1949	137	0.3%
1950-1959	278	0.7%
1960-1969	429	1.1%
1970-1979	910	2.3%
1980	381	1.0%
1981	183	0.5%
1982	269	0.7%
1983	257	0.7%
1984	278	0.7%
1985	349	0.9%
1986	420	1.1%
1987	308	0.8%
1988	361	0.9%
1989	405	1.0%
1990	601	1.5%
1991	410	1.0%
1992	490	1.2%
1993	406	1.0%
1994	478	1.2%
1995	612	1.6%
1996	692	1.8%
1997	539	1.4%
1998	574	1.5%
1999	455	1.2%
2000	637	1.6%
2001	504	1.3%
2002	585	1.5%
2003	632	1.6%
2004	758	1.9%
2005	1539	3.9%
2006	15248	38.9%
2011	1	0.0%
Missing	9014	23.0%

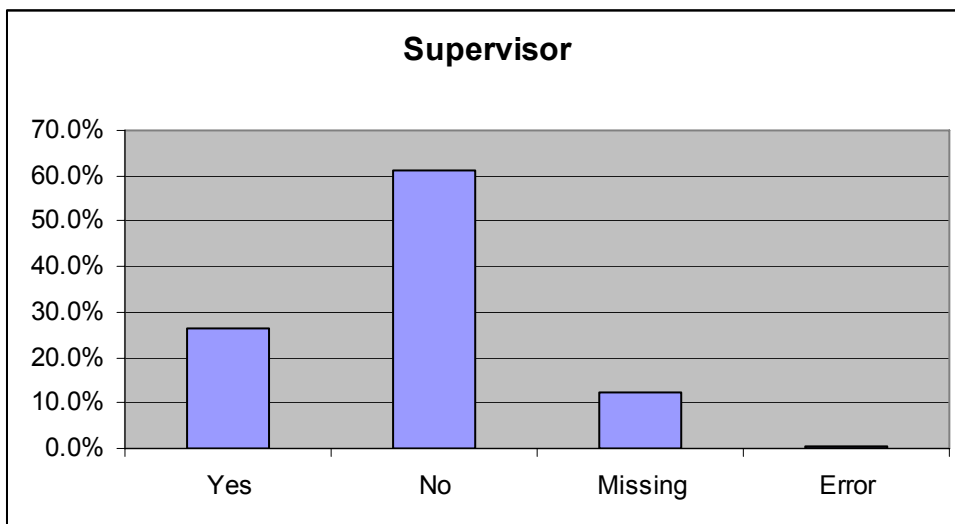
ANNEX C Frequency Counts for Census Test questions



23. Instruction only

24. Do (did) you supervise any other employees?

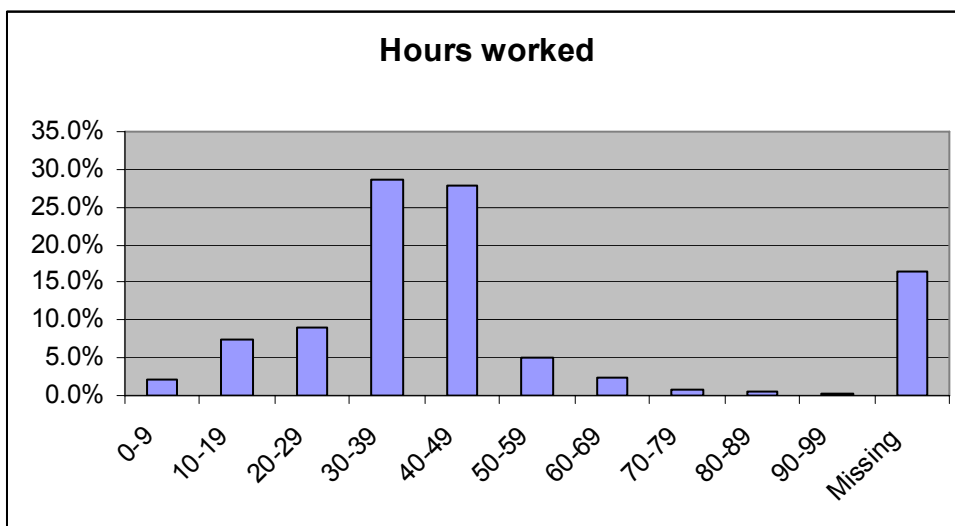
Response	Frequency	%
Yes	10329	26.3%
No	23939	61.1%
Missing	4846	12.4%
Error	88	0.2%



ANNEX C Frequency Counts for Census Test questions

25. How many hours (to the nearest full hour) a week do (did) you usually work in your main job? (Write-in question)

Response	Frequency	%
0-9	849	2.2%
10-19	2892	7.4%
20-29	3508	8.9%
30-39	11204	28.6%
40-49	10881	27.8%
50-59	1973	5.0%
60-69	933	2.4%
70-79	271	0.7%
80-89	216	0.6%
90-99	82	0.2%
Missing	6393	16.3%



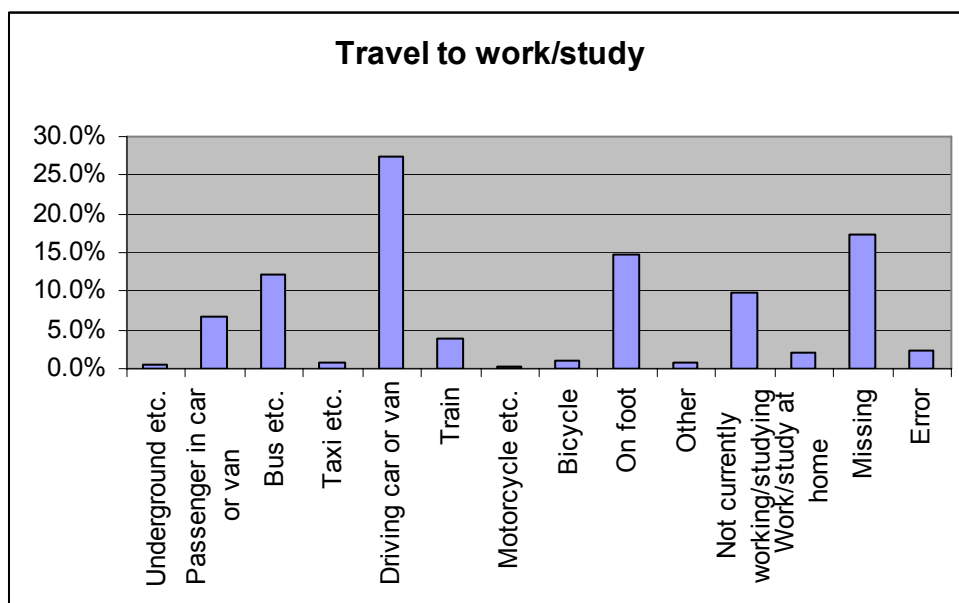
26. What is (was) the full title of your main job?

Given the number of possible answers to this question, details of frequencies are not given here. Non-response information is given in section 4.3.2 of the main body of the report.

ANNEX C Frequency Counts for Census Test questions

27. How do you usually travel to your main place of work or study (including school)?

Response	Frequency	%
Underground etc.	256	0.6%
Passenger in car or van	3086	6.6%
Bus etc.	5630	12.1%
Taxi etc.	372	0.8%
Driving car or van	12801	27.5%
Train	1769	3.8%
Motorcycle etc.	86	0.2%
Bicycle	504	1.1%
On foot	6867	14.8%
Other	357	0.8%
Not currently working/studying	4582	9.9%
Work/study at home	1009	2.2%
Missing	8103	17.4%
Error	1072	2.3%

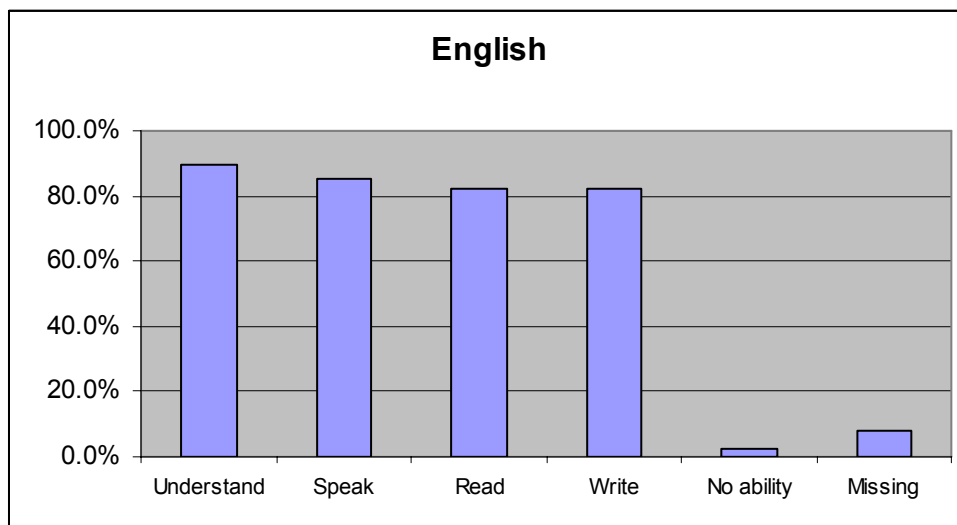


28. Which languages can you understand, speak, read or write? (Multi-tick question)

a. English

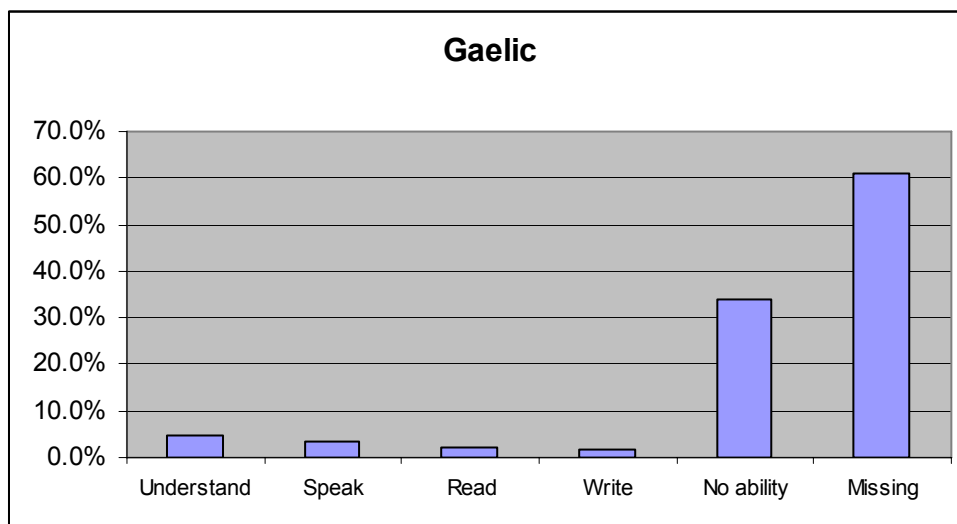
Response	Frequency	%
Understand	41759	89.8%
Speak	39725	85.4%
Read	38347	82.5%
Write	38198	82.2%
No ability	1008	2.2%
Missing	3608	7.8%

ANNEX C Frequency Counts for Census Test questions



b. Scottish Gaelic

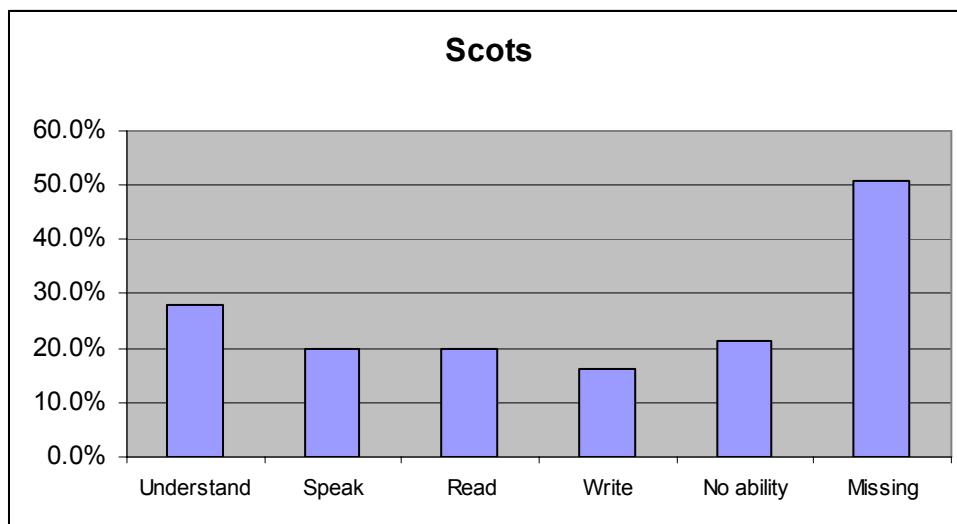
Response	Frequency	%
Understand	2239	4.8%
Speak	1546	3.3%
Read	1097	2.4%
Write	853	1.8%
No ability	15714	33.8%
Missing	28389	61.1%



ANNEX C Frequency Counts for Census Test questions

c. Scots

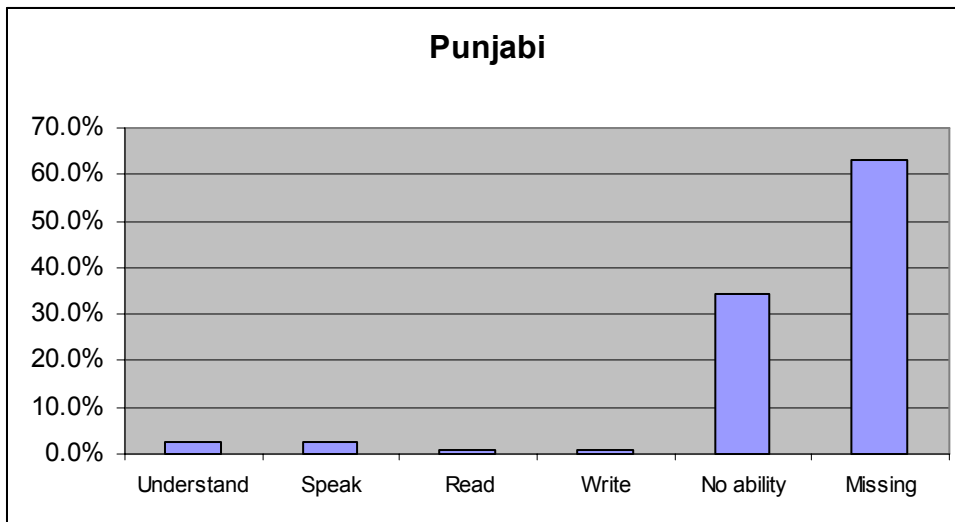
Response	Frequency	%
Understand	12948	27.8%
Speak	9250	19.9%
Read	9166	19.7%
Write	7507	16.1%
No ability	9979	21.5%
Missing	23611	50.8%



d. Punjabi

Response	Frequency	%
Understand	1256	2.7%
Speak	1171	2.5%
Read	395	0.8%
Write	341	0.7%
No ability	15961	34.3%
Missing	29267	62.9%

ANNEX C Frequency Counts for Census Test questions



e. Other

Response	Frequency	%
Understand	2617	5.6%
Speak	2375	5.1%
Read	2061	4.4%
Write	1768	3.8%
No ability	10818	23.3%
Missing	33021	71.0%

