

# Scotland's Census

## The Quality Assurance Process

Census Management Team, October 2012

# Overview

- ▶ Preliminary stages
- ▶ Quality assurance of population and household estimates
- ▶ Worked examples
- ▶ Dissemination of results of quality assurance

# Development of methods

- ▶ Carried out agreed series of simple univariate checks at early stages
- ▶ Benefits of early sight of data was that feedback could be provided to processing team
- ▶ Developed systems and tools to be used throughout process and for dissemination of quality information

# What did we find?

- ▶ Processing had missed out some variables – back to the beginning
- ▶ What we expected - respondents don't do what you always expect
- ▶ Initial findings raised issues with coding and ways in which some questions were answered

# Individual questions 2011

4 On the 27 March 2011, what is your legal marital or same-sex civil partnership status?

- Never married and never registered a same-sex civil partnership
- Married
- Separated, but still legally married
- Divorced
- Widowed
- In a registered same-sex civil partnership
- Separated, but still legally in a same-sex civil partnership
- Formerly in a same-sex civil partnership which is now legally dissolved
- Surviving partner from a same-sex civil partnership

# Individual questions 2011

**5** Are you a schoolchild or student in full-time education?

Yes

No → Go to **7**

**6** During term-time, do you live:

at the address on the front of this questionnaire?

at another address? → Go to **38**

20 Do you have any of the following conditions which have lasted, or are expected to last, at least 12 months?

◆ Tick all that apply.

- Deafness or partial hearing loss
- Blindness or partial sight loss
- Learning disability (for example, Down's Syndrome)
- Learning difficulty (for example, dyslexia)
- Developmental disorder (for example, Autistic Spectrum Disorder or Asperger's Syndrome)
- Physical disability
- Mental health condition
- Long-term illness, disease or condition
- Other condition, please write in

--	--	--	--	--	--	--	--	--	--	--	--	--	--	--	--	--	--	--	--	--	--	--

--	--	--	--	--	--	--	--	--	--	--	--	--	--	--	--	--	--	--	--	--	--	--

or

- No condition

# What did we do about it?

- ▶ Carried out more in-depth checks, prioritising key data used in first release
- ▶ Analysed data for issues which would cause problems in later processes, in particular edit and imputation
- ▶ Recoded some text responses including ethnic group and language
- ▶ Sometimes nothing – but will need to report quality to users



# Implemented Quality Assurance (QA) strategy

- Carried out range of core checks aimed at quality assuring population and household counts – using first cut of estimation data
- Checks of other characteristics at key stages of the process – load and validation, after Remove Multiple Records (RMR) and after filter rules
- Met with internal quality assurance working group

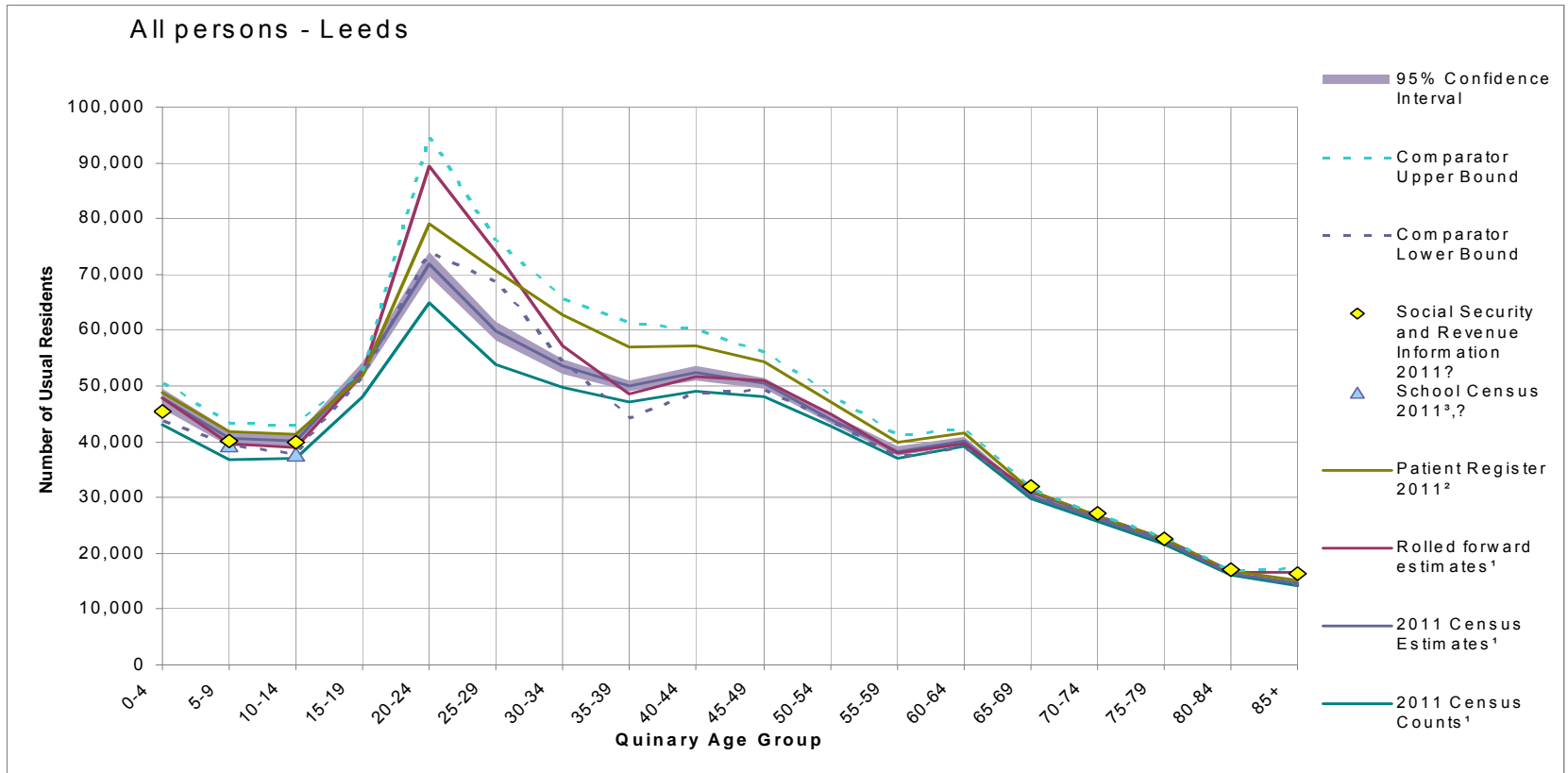
# QA tasks by processing step

QA Tool	Task	Processing Step				
		Step 9	Pre-Est	E&I	E&A	E&I 2
Variable Distributions	- Update data systems	✓	✗	✓	✗	✓
	- Fill in templates	✓	✗	✓	✗	✓
	- Identify key issues per Local Authority (LA)	✓	✗	✓	✗	✓
Missing Data Analysis	- Update spreadsheet	✓	✗	✗	✗	✗
	- Identify key findings per LA	✓	✗	✗	✗	✗
Demography Data	- update Population scroll charts	✓	✓	✗	✓	✗
	- Household & dwellings	✓	✓	✗	✓	✗
	- Household sizes	✓	✗	✗	✓	✗
	- Student counts / Higher Education	✓	✗	✗	✓	✗
	Statistics Agency (HESA)	✓	✗	✗	✓	✗
	- Armed Forces	✓	✗	✗	✓	✗
	- Migration	✓	✗	✗	✓	✗
	- Other Communals	✓	✗	✗	✓	✗
	- Fertility rates	✓	✓	✗	✓	✗
- Identify key issues per LA						

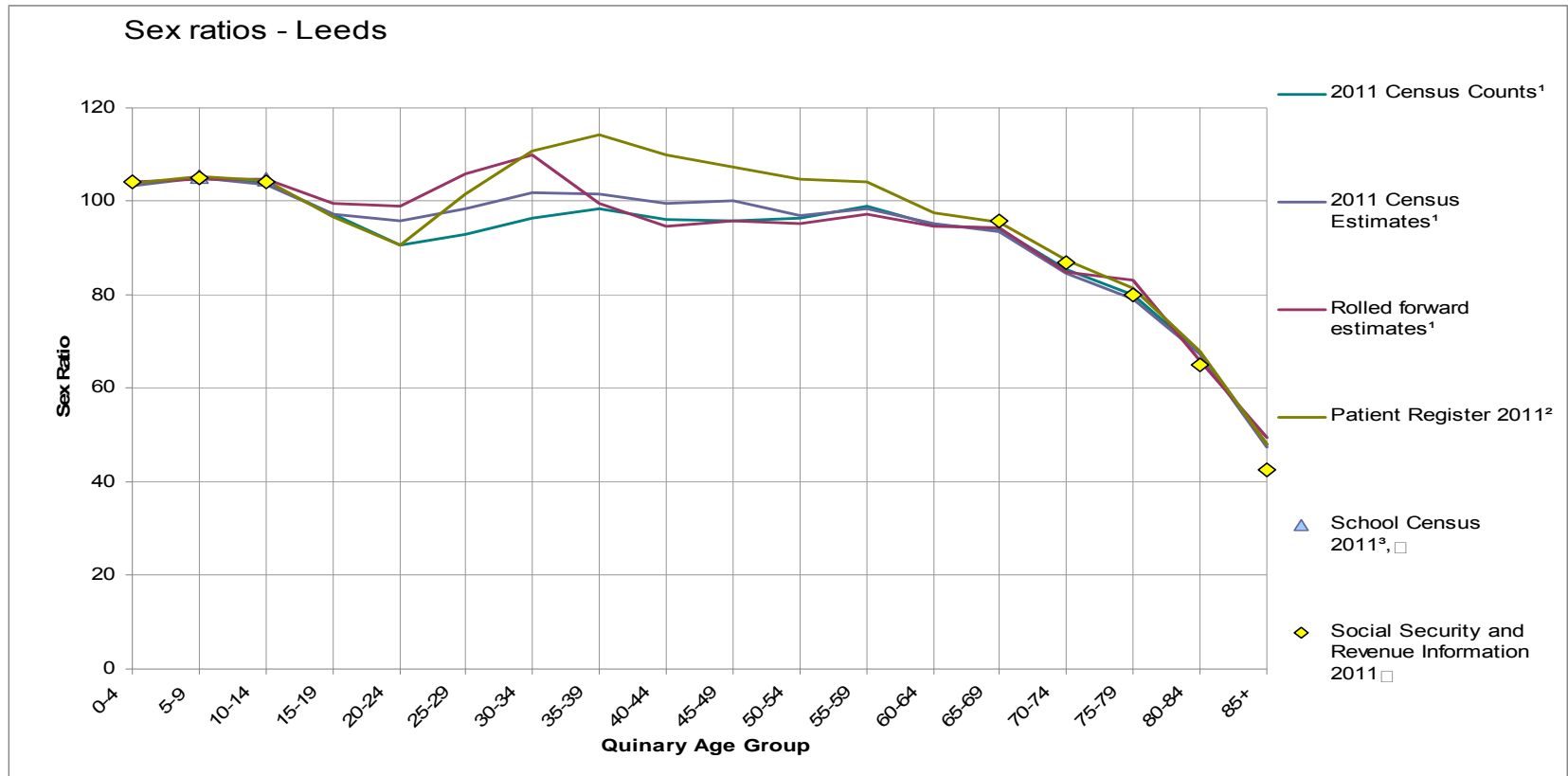
# Quality assurance pack

- ▶ To accompany the first release of population and household statistics, Office for National Statistics (ONS) published detailed data used in the quality assurance process
- ▶ National Records of Scotland (NRS) are considering using the same tool for publishing QA material relating to the first release.
- ▶ This can be accessed via [ONS website](#)
- ▶ The following slides are extracts from the pack

# Results for Leads



# Sex ratios in Leeds



Thank You!