

Scottish Council Areas 2001 to 2011 Census Profile Comparator Tool

Published 15th February 2017

East Lothian

Introduction:

Scotland's Censuses for 2001 and 2011 collected a wealth of statistics and information to support our understanding of Scotland's people and places. The profiles in this tool present a selection of interesting graphs and tables to allow comparison between 2001 and 2011 for each of the 32 Council Areas. If you want to find out more about the data used to create these profiles, or would like to find out more about the census in Scotland, please visit www.scotlandscensus.gov.uk or get in touch with us: scotlandscensus@nrscotland.gov.uk

[Click here to find an excel version of the tool.](#)

Metadata are available on the last page of this file.

Enquiries

statisticscustomerservices@nrscotland.gov.uk

0131 314 4299

To keep informed about census products and news, please [subscribe](#) to the Scotland's Census newsletter (link opens in new page)

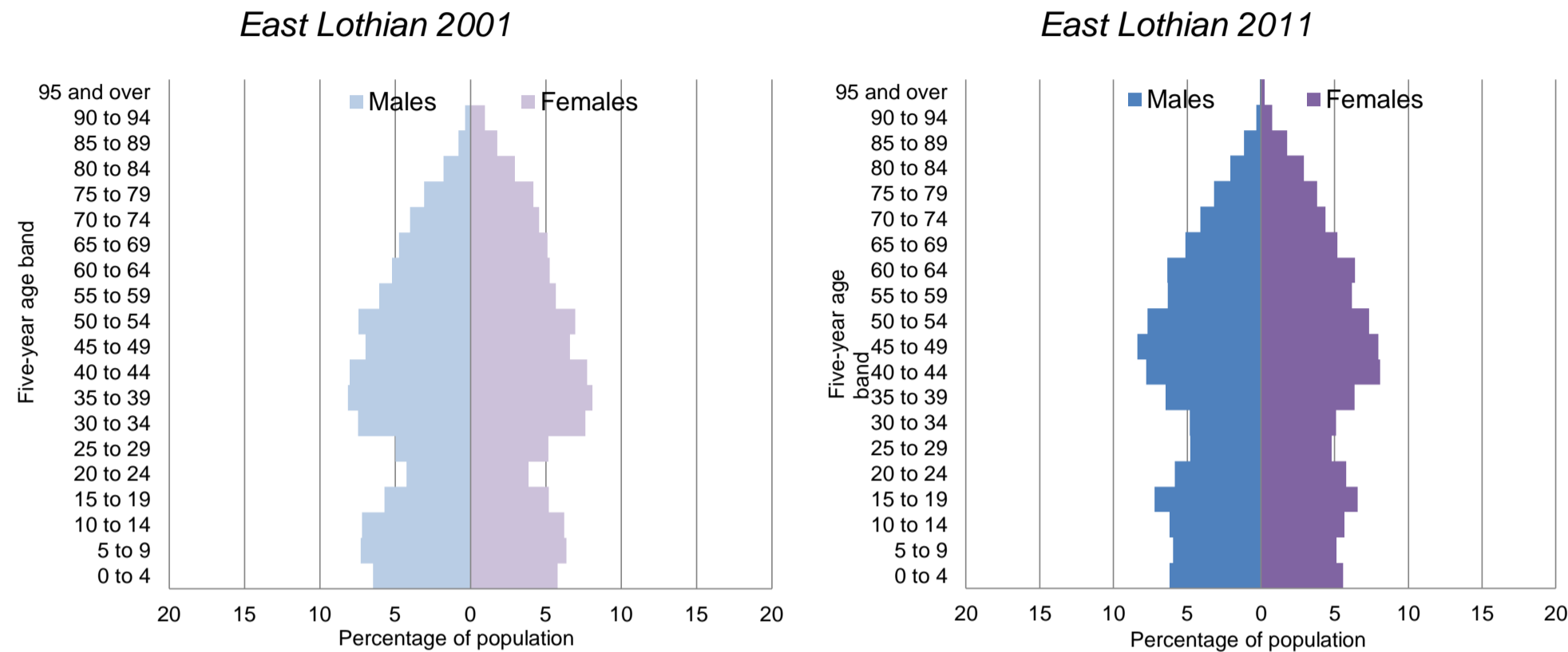
Follow us on twitter: [@NatRecordsScot](https://twitter.com/NatRecordsScot)

Visit Scotland's Census at <http://www.scotlandscensus.gov.uk/>

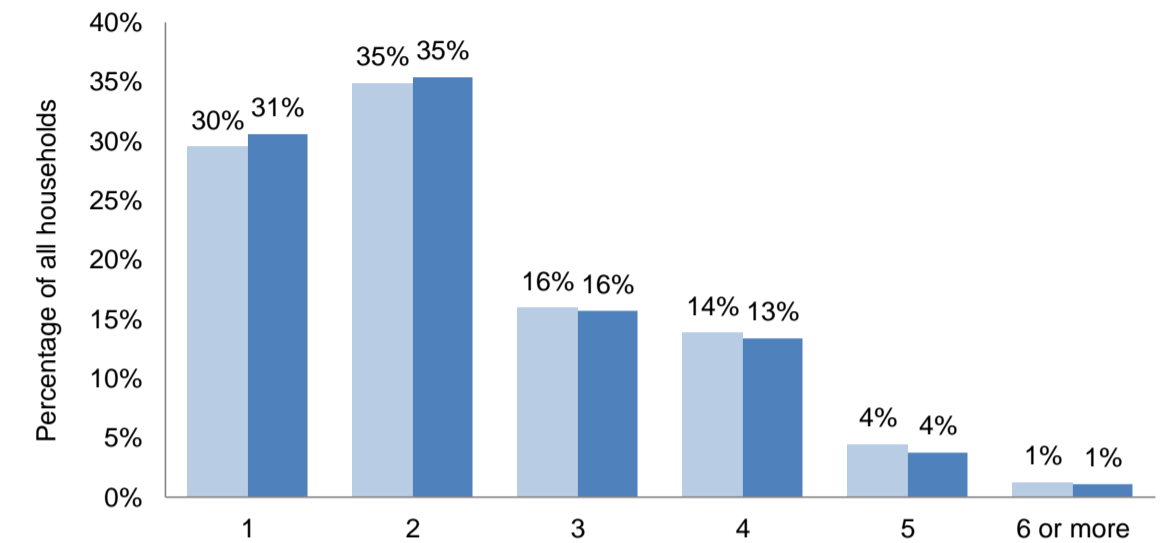
Total Population of Council Area:	2001	90,088
	2011	99,717

Total number of households in Council Area:	2001	38,157
	2011	42,905

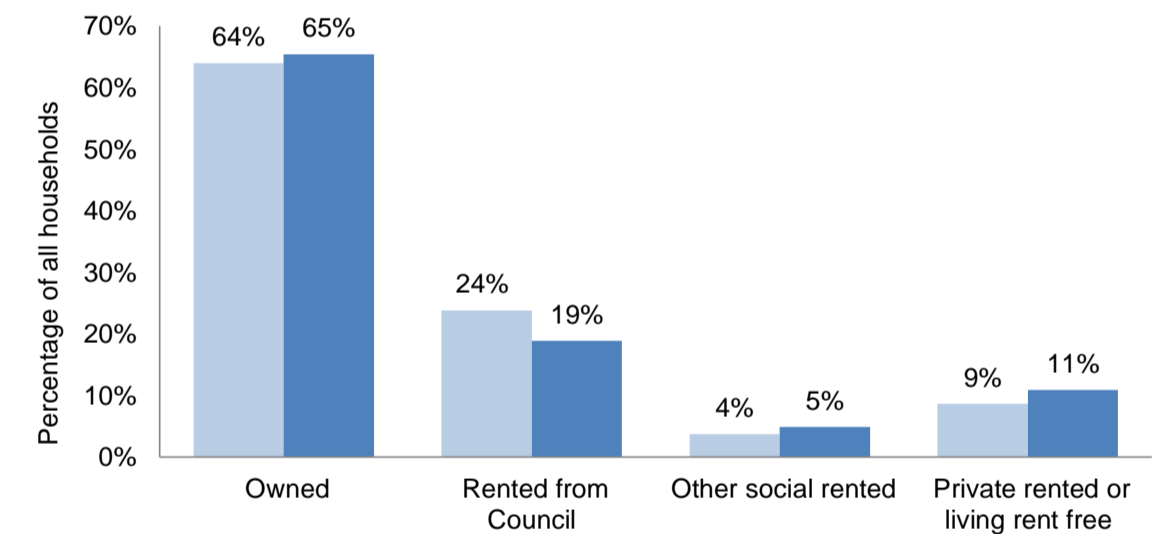
Total population by five year age bands For further comparison click here: [Population comparator](#)



Households by household size (number of occupants)



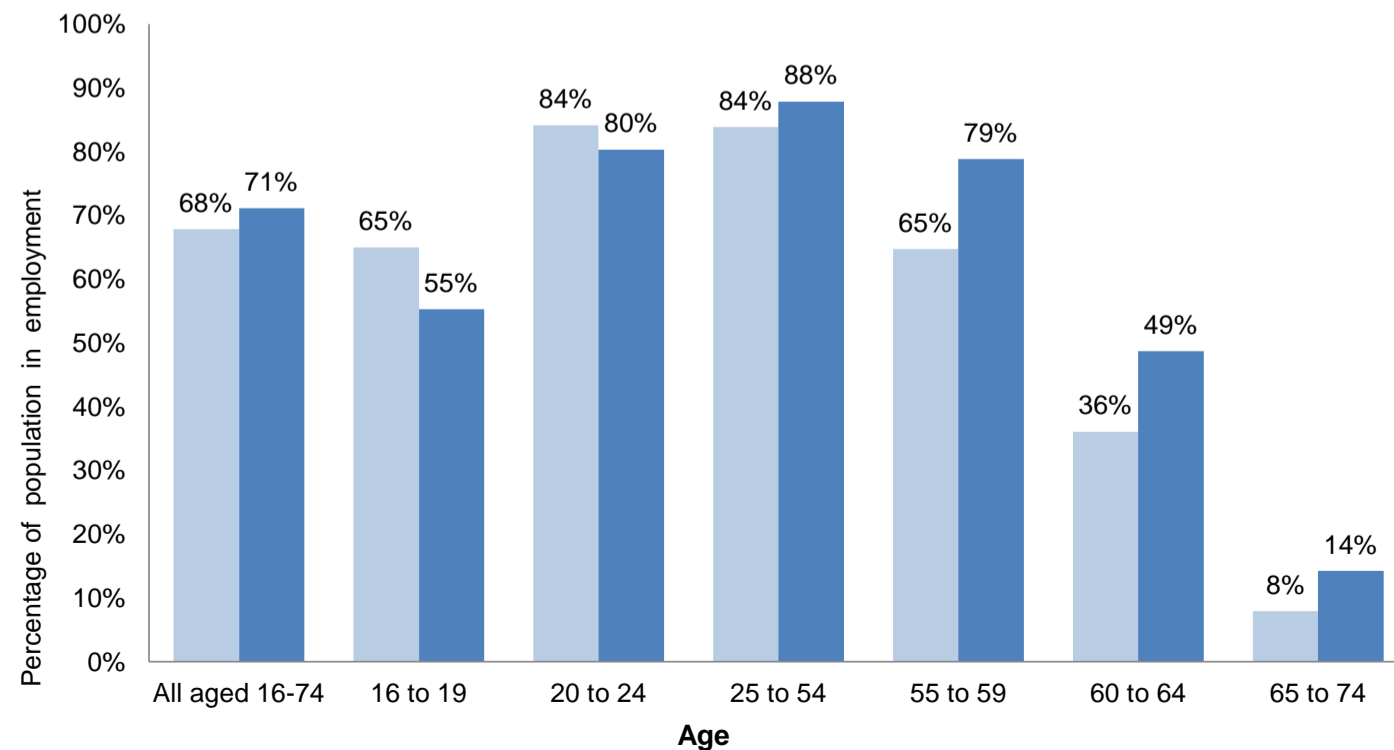
Households by type of tenure



Percentage of total population by ethnic group

	White: Scottish	White: Other British	White: Irish	White: Other	Mixed or multiple ethnic groups	Asian, Asian Scottish or Asian British	African, Caribbean or Black	Other ethnic groups
East Lothian 2001	89%	9%	1%	1%	0%	0%	0%	0%
East Lothian 2011	86%	9%	1%	3%	0%	1%	0%	0%

Population economically active by age

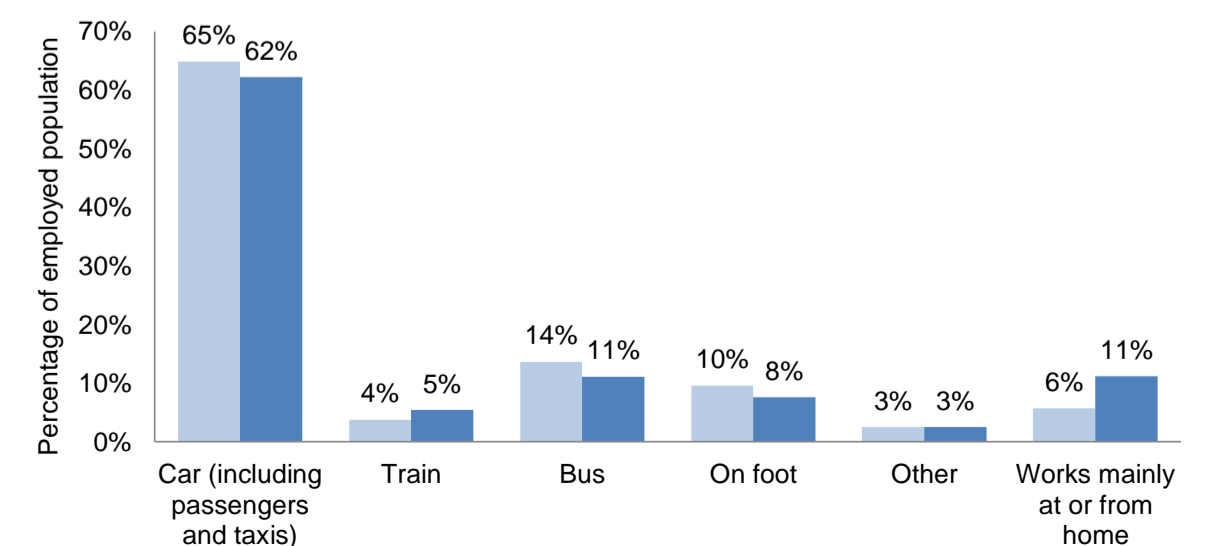


Key



Households with no car or van available:	2001	27%
	2011	23%

Method of travel to work for those in employment * (16-74)



* Excludes full-time students

Percentage of population providing unpaid care

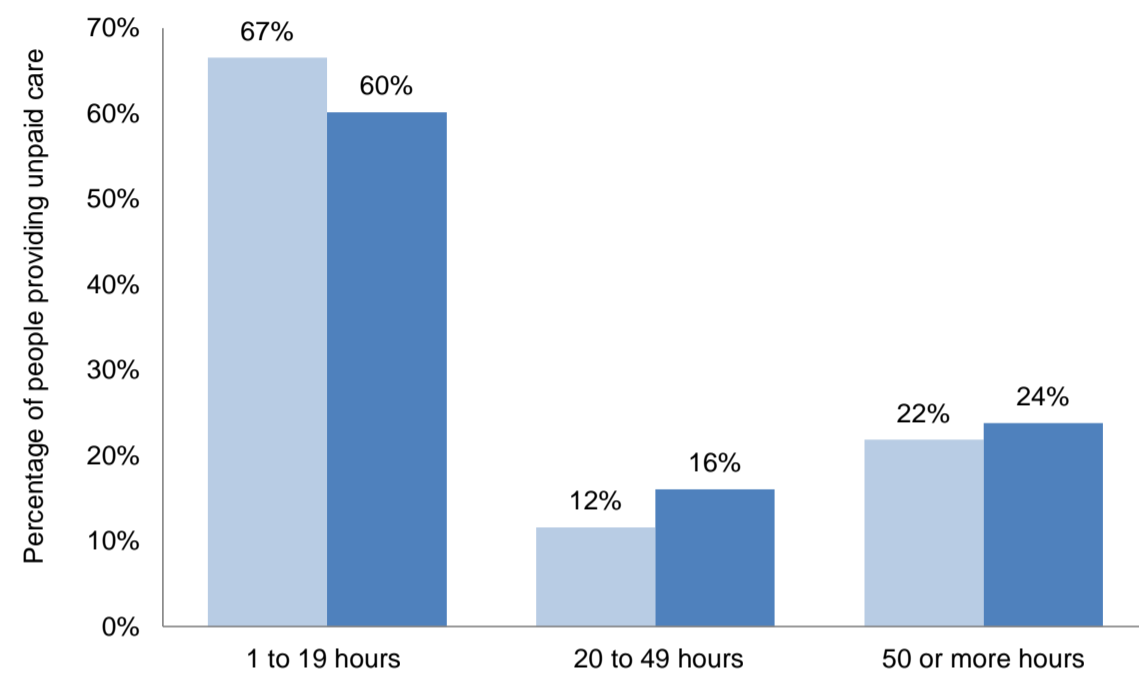
	Provides care	Does not provide care
East Lothian 2001	10%	90%
East Lothian 2011	10%	90%

Key

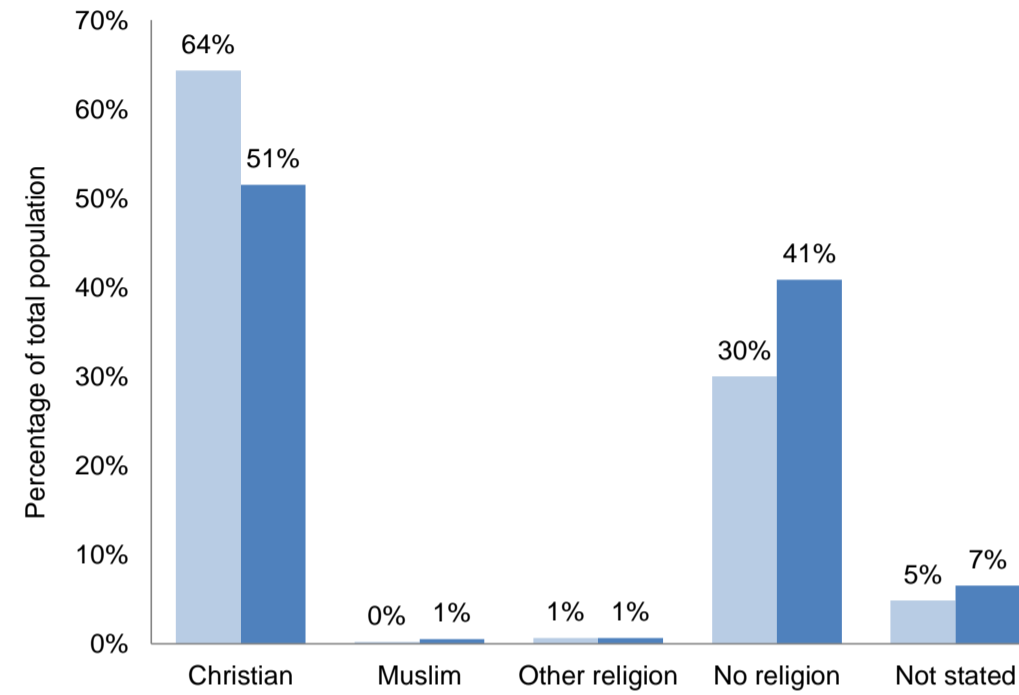


If you have found this useful or have suggestions, please get in touch and tell us: scotlandscensus@nrscotland.gov.uk

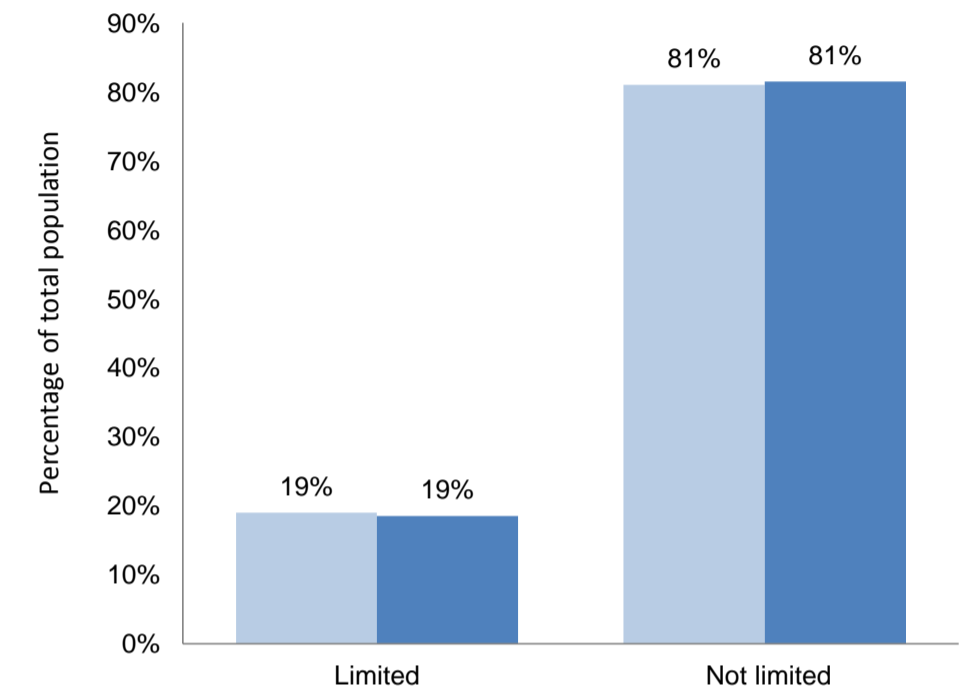
Hours of unpaid care given per week



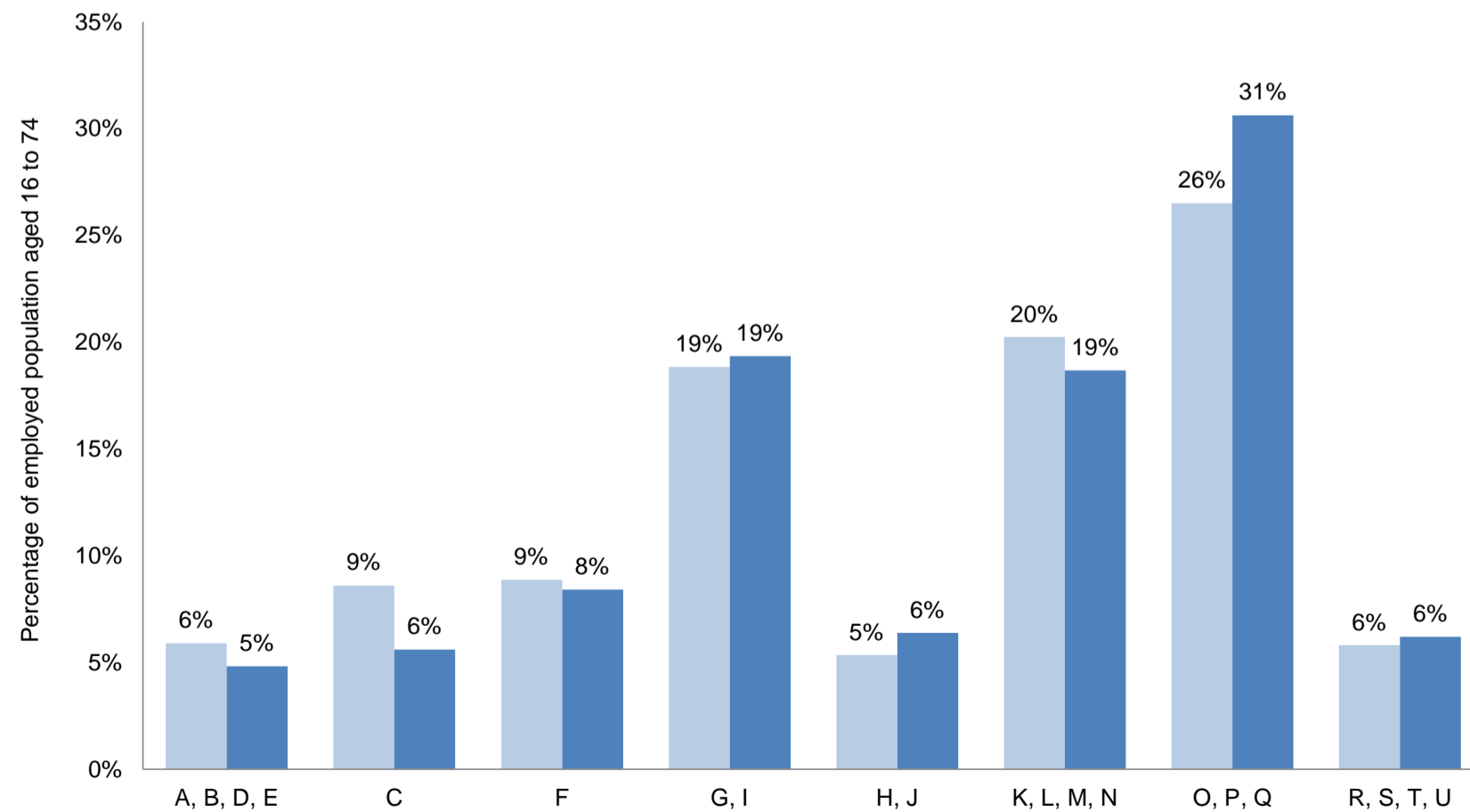
Religion



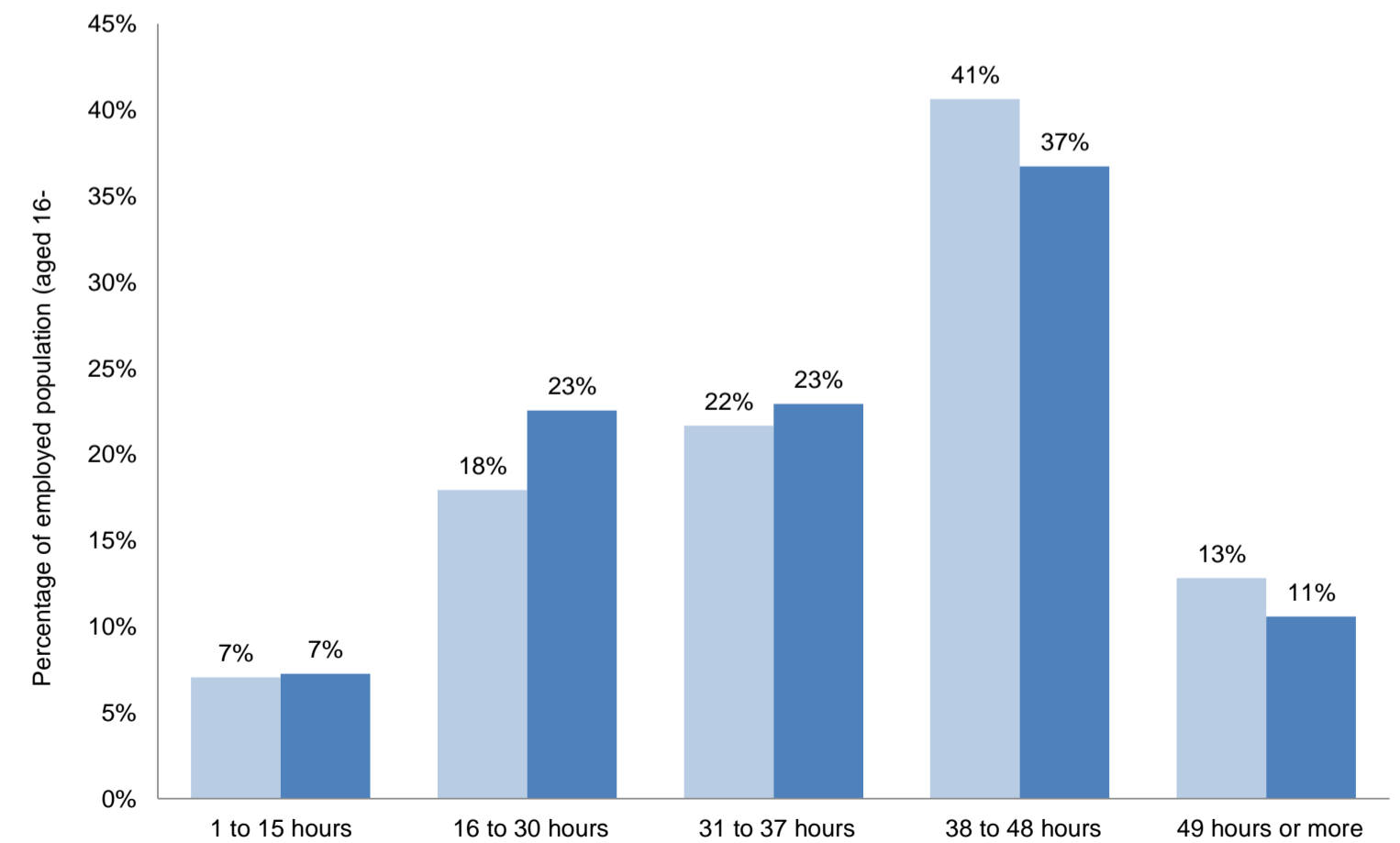
Limiting long-term health condition or disability



Industry



Number of hours worked per week



Industry categories:

ABDE: Agriculture, Energy and Water **C:** Manufacturing **F:** Construction **GI:** Distribution, Hotels and Restaurants
HJ: Transport and Communication **KLMN:** Financial, Real Estate, Professional and Administrative Activities
OPQ: Public Administration, Education and Health **RSTU:** Other

Further information on the 2011 Census, including explanations of variables, can be found on the Scotland's Census website: <http://www.scotlandscensus.gov.uk/>

Metadata

This sheet includes information on the following variables: (click for links to appropriate metadata)

[Age](#)

[Car or van availability](#)

[Economic activity](#)

[Ethnicity](#)

[Hours worked](#)

[Household size](#)

[Industry](#)

[Long-term health problem or disability](#)

[Method of travel to work](#)

[Provision of unpaid care](#)

[Religion](#)

[Sex](#)

[Students](#)

[Tenure](#)

The data and tables used in this profile can found on the Census Data Explorer:

<http://www.scotlandscensus.gov.uk/ods-web/home.html>