

Statistical Bulletin

Coverage: Scotland

Date: 21 March 2013

Geographical Area: Scotland, Council Area

Theme: Population and Household estimates

2011 Census: First Results on Population and Household Estimates for Scotland - Release 1B

Contents

1. Main points	1
2. Introduction	2
3. Census day population, 2011	3
3.1 Population by sex by council area, 2011	3
3.2 Age structure of the population by council area, 2011	4
4. Percentage change in population, 2001 to 2011	6
4.1 Change in the population aged under 15, 2001 to 2011	8
4.1.1 Change in the population aged under 5, 2001 to 2011	10
4.2 Change in the population aged 15 to 64, 2001 to 2011	11
4.2.1 Percentage change in the population aged 15 to 39, 2001 to 2011	13
4.2.2 Percentage change in the population aged 40 to 64, 2001 to 2011	13
4.3 Change in the population aged 65 and over, 2001 to 2011	14
4.3.1 Percentage change in the population aged 80 and over, 2001 to 2011	16
5. Population dependency ratios	17
6. Households	18
6.1 Household and communal establishment residents, 2011	18
6.2 Number of households in Scotland, 2011 and 2001	18
6.3 Change in household size, 2001 to 2011	19
6.4 Change in household size, 1961 to 2011	21
7. Background notes	23
8. Further results	25
Appendix 1: Tables	26

Laid before the Scottish Parliament under Section 4(1) of the Census Act 1920

SG/2013/26

1. Main points

Population

- The population of Scotland on census day in 2011 was estimated to be 5,295,400 - the highest ever.
- There were more women (2,728,000 or 51.5 per cent) than men (2,567,400 or 48.5 per cent) in Scotland. This was the case for all council areas except for Shetland Islands.

Age structure

- In 2011, 17 per cent of the population were aged 65 and over. This percentage ranges from 14 per cent in West Lothian to 22 per cent in Argyll & Bute.

Age comparisons with 10 years ago

- Since 2001, the number of children aged under 5 years in Scotland has increased by 6 per cent. This change has not been uniform throughout the country. In the City of Edinburgh the increase was 18 per cent whilst there was a reduction of 11 per cent in Argyll & Bute.
- The number of people aged 80 and over has increased by 19 per cent since 2001. All council areas have seen rises but this ranges from a 3 per cent increase in Glasgow City to a 44 per cent increase in East Dunbartonshire.

Households

- 98 per cent of Scotland's 5,295,400 population lived in households in 2011 with the remaining 2 per cent living in communal establishments, such as university halls of residence, prisons and care homes.
- The number of households in Scotland with at least one usual resident on census day in 2011 was estimated to be 2,372,780 - the highest ever.
- The average household size in Scotland was 2.19 people per household and ranged from 2.02 in Glasgow City to 2.42 in East Renfrewshire.

Household comparisons with 10 years ago

- Since 2001 the number of households in Scotland increased by 180,530 (8 per cent) from 2,192,250. All council areas saw increases with the largest increases in Orkney Islands (17 per cent), Aberdeenshire (15 per cent) and Highland (14 per cent).
- Between 2001 and 2011 the number of households increased faster than the number of people in households in all areas of Scotland. This has led to a decrease in average household size from 2.27 to 2.19 people per household.
- In 1961, one-person households were the least common household type and accounted for 14 per cent of all households. By 2011 they had become the most common household type and accounted for 35 per cent of all households.

2. Introduction

This bulletin presents further information on the first results from the 2011 Census in Scotland, which was held on 27 March 2011. The statistics provide estimates (rounded to the nearest hundred) of the usually resident population of Scotland and each council area on Census day, broken down by five-year age bands and sex, together with estimates (rounded to the nearest ten) of the number of households in each council area.

The bulletin begins with an evaluation of the differences in age structure between council areas in Scotland. The changes in age structure compared with the previous census in 2001 are then presented. Households data are also analysed to show differences across the council areas and changes since 2001.

All census estimates have been quality assured extensively, using other national and local sources of information for comparison. The estimates have also been reviewed by a series of quality assurance panels which gives confidence that the 2011 Census provides a high quality estimate of Scotland's population.

A range of supporting information is available along with this bulletin, including:

- [a summary of the statistical methodology](#) used to derive the 2011 Census population and household estimates for Scotland;
- [a summary of the quality assurance process](#) used to check the 2011 Census population and household estimates for Scotland;
- [a quality assurance pack](#) – to place the census population and household estimates for each council area in the context of comparative information from non-census data sources;
- [an interactive mapping tool](#) – to illustrate spatially how the age profile of the population, and the change in these between 2001 and 2011, varies by council area;
- [an interactive population chart comparator tool](#) – to illustrate differences in the population age by sex between different areas and between 2001 and 2011; and
- [a glossary](#) of relevant census terms and definitions.

Appendix 1 contains the set of statistical tables on which this bulletin is based. Additional information is given in the background notes.

Further evaluation reports will be published with later releases of census results.

Information on the UK-wide census results can be found on the [UK census website](#).

Information on the census in England & Wales can be found on the [Office for National Statistics \(ONS\) website](#).

Information on the census in Northern Ireland can be found on the [Northern Ireland Statistics and Research Agency \(NISRA\) website](#).

3. Census day population, 2011

This bulletin builds on the information presented in the first release of Scotland's 2011 Census data, [Release 1A](#), published on 17 December 2012. The key findings from that showed:

- Scotland's population on census day 2011 was estimated to be 5,295,000 – the highest ever.
- There were more women than men in Scotland's population.
- Since the 2001 Census, the population has increased by 233,000 (5 per cent). This represents the fastest growth rate between two censuses in the last century.
- Scotland's population is ageing; the 2011 Census was the first ever where the number of people aged 65 and over was higher than the number aged under 15.

3.1 Population by sex by council area, 2011

Table 1 provides the population counts by sex in each council area on census day 2011. Figures rounded to the nearest hundred show there were 2,728,000 women (51.5 per cent) compared with 2,567,400 men (48.5 per cent) in Scotland's population. There were more women than men in all council areas apart from Shetland Islands.

Table 1: Census day usually resident population by sex and council area, 2011

Council area	Population ¹			Per cent ²	
	Persons	Males	Females	Males	Females
SCOTLAND	5,295,400	2,567,400	2,728,000	48.5	51.5
Aberdeen City	222,800	110,100	112,700	49.4	50.6
Aberdeenshire	253,000	125,300	127,700	49.5	50.5
Angus	116,000	56,200	59,800	48.5	51.5
Argyll & Bute	88,200	43,100	45,000	48.9	51.1
Clackmannanshire	51,400	25,100	26,300	48.8	51.2
Dumfries & Galloway	151,300	73,400	77,900	48.5	51.5
Dundee City	147,300	70,700	76,600	48.0	52.0
East Ayrshire	122,700	59,400	63,400	48.4	51.6
East Dunbartonshire	105,000	50,600	54,400	48.2	51.8
East Lothian	99,700	47,900	51,800	48.0	52.0
East Renfrewshire	90,600	43,200	47,400	47.7	52.3
Edinburgh, City of	476,600	232,400	244,200	48.8	51.2
Eilean Siar	27,700	13,700	14,000	49.4	50.6
Falkirk	156,000	76,100	79,900	48.8	51.2
Fife	365,200	176,900	188,300	48.5	51.5
Glasgow City	593,200	286,100	307,200	48.2	51.8
Highland	232,100	113,500	118,700	48.9	51.1
Inverclyde	81,500	39,000	42,500	47.8	52.2
Midlothian	83,200	40,100	43,100	48.2	51.8
Moray	93,300	45,900	47,400	49.2	50.8
North Ayrshire	138,200	65,800	72,400	47.6	52.4
North Lanarkshire	337,800	163,400	174,400	48.4	51.6
Orkney Islands	21,400	10,600	10,800	49.5	50.5
Perth & Kinross	146,700	71,500	75,200	48.7	51.3
Renfrewshire	174,900	84,100	90,800	48.1	51.9
Scottish Borders	113,900	55,200	58,700	48.4	51.6
Shetland Islands	23,200	11,800	11,400	50.8	49.2
South Ayrshire	112,800	53,700	59,000	47.6	52.4
South Lanarkshire	313,800	150,900	163,000	48.1	51.9
Stirling	90,200	43,200	47,000	47.9	52.1
West Dunbartonshire	90,700	43,200	47,500	47.6	52.4
West Lothian	175,100	85,500	89,500	48.9	51.1

¹ Population data are rounded to the nearest hundred.

² Percentages are calculated from unrounded data.

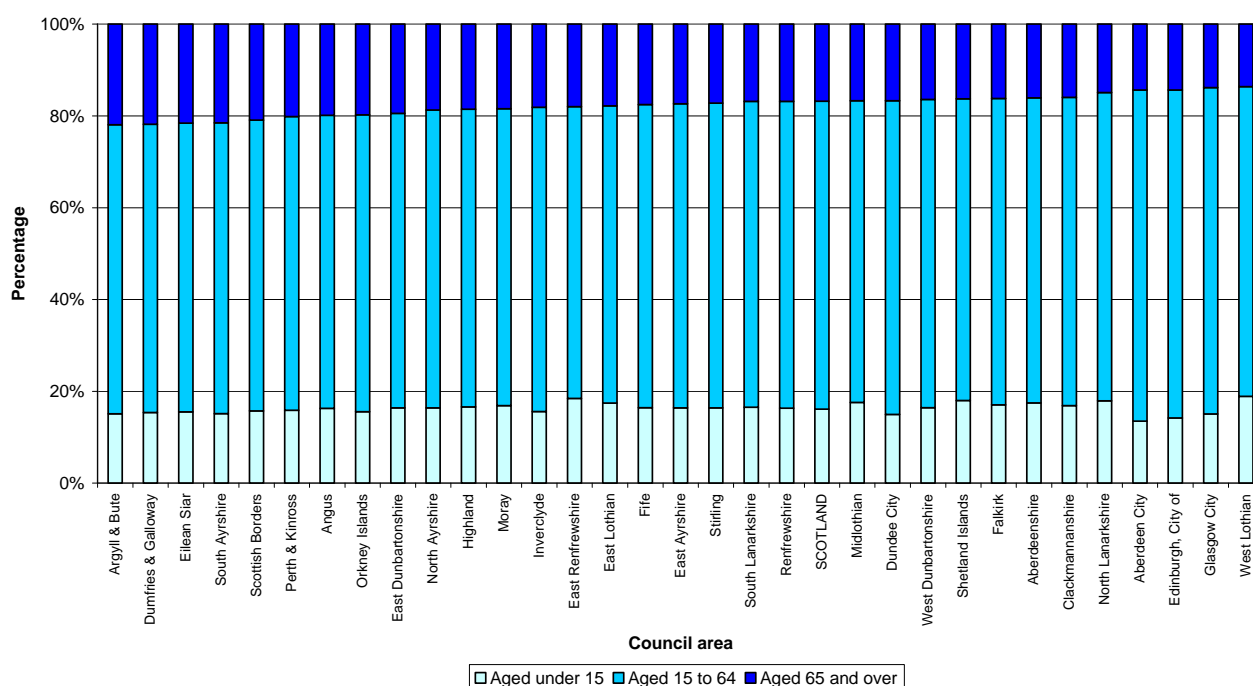
Download this as [Excel](#), [csv](#), [PDF](#)

3.2 Age structure of the population by council area, 2011

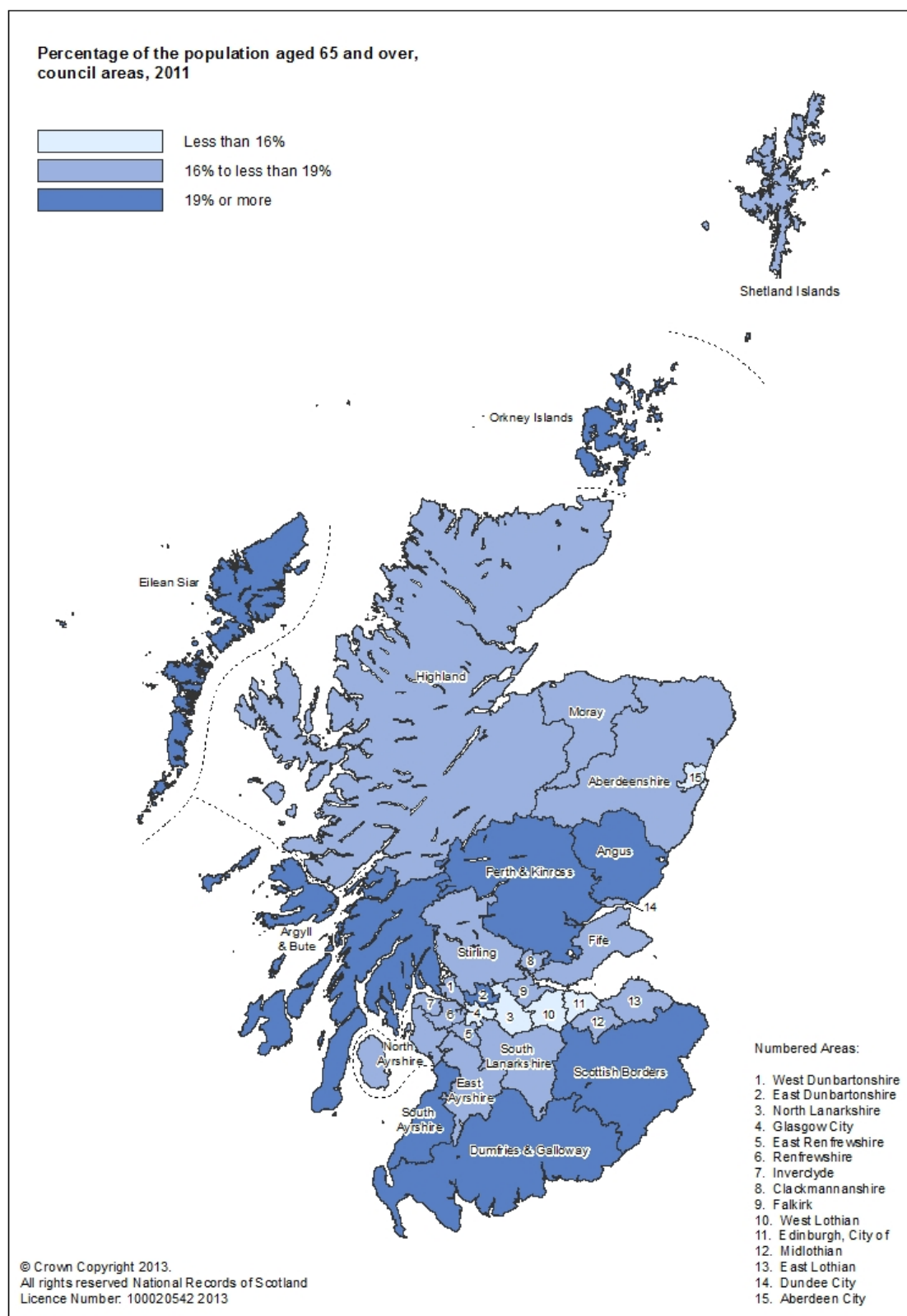
Knowing the size and geographical location of all age groups is vital to planning as it directly impacts on the provision of services such as education and health care. As discussed in the first release of Scotland's 2011 Census data, [Release 1A](#), there has been a long-term trend towards an ageing population.

Figure 1 illustrates the broad age profile of the population in each council area on census day 2011. There are six council areas in which one fifth or more of the population are aged 65 and over: Argyll & Bute, Dumfries & Galloway, Eilean Siar, South Ayrshire, Scottish Borders and Perth & Kinross. The council areas with the lowest percentage of the population aged 65 and over are West Lothian, Glasgow City, City of Edinburgh and Aberdeen City (each with 14 per cent of the population aged 65 and over). The map in Figure 2 illustrates the variation in the percentage of the population aged 65 and over across the council areas in Scotland.

Figure 1: Population by age group and council area, 2011 (ranked by the percentage aged 65 and over)



Download this as [Excel](#), [csv](#), [PDF](#)
See Tables A5, A8 and A11 in Appendix 1.

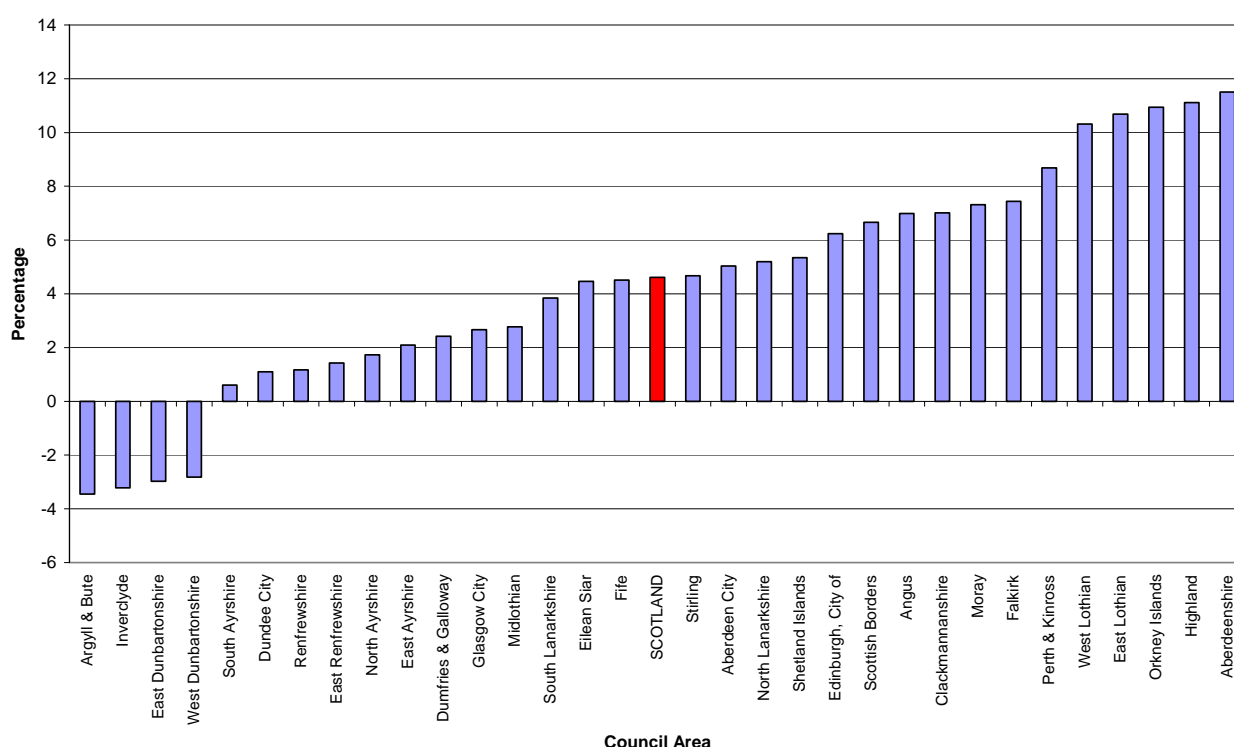
Figure 2: Percentage of the population aged 65 and over, by council area, 2011

Download this as [Excel](#), [csv](#), [PDF](#)
See Table A11 in Appendix 1.

4. Percentage change in population, 2001 to 2011

Since the 2001 Census, the population of Scotland has increased by 233,400 (5 per cent). The percentage change in council area populations between 2001 and 2011 can be seen in Figure 3. The population increased in all council areas apart from Argyll & Bute, Inverclyde, East Dunbartonshire and West Dunbartonshire (each of which had a decrease in population of around 3 per cent). The largest absolute decrease in numbers was in East Dunbartonshire. The council areas with the greatest percentage increase in population between 2001 and 2011 were Aberdeenshire (12 per cent), Highland, Orkney Islands and East Lothian (all around 11 per cent). The biggest absolute increase in numbers was in the City of Edinburgh.

Figure 3: Percentage change in total population by council area, 2001 to 2011



Download this as [Excel](#), [csv](#), [PDF](#)
See Table A4 in Appendix 1.

Table 2 shows the percentage change in the population by three age groups. Since 2001, there has been a 6 per cent decrease in the number of people aged under 15, a 6 per cent increase in people aged 15 to 64, and an 11 per cent increase in the population aged 65 and over.

This pattern of changes to age groups varies across council areas, resulting in changes in age structure. For example, in East Dunbartonshire, there was a big decrease in the number of people aged under 15 (16 per cent) and a big increase in the number of people aged 65 and over (22 per cent). In contrast, City of Edinburgh showed a relatively small decrease in its population aged under 15 and also in its population aged 65 and over (both decreases of 1 per cent).

Further detail on the differences in age by sex profiles between different council areas and between 2001 and 2011 can be seen by using the [interactive population chart comparator tool](#), which is available on the Scotland Census website.

A majority of council areas experienced decreases in their population aged under 15. All council areas, apart from the cities of Edinburgh, Glasgow, Aberdeen and Dundee have experienced increases in population aged 65 and over.

This bulletin presents the changes in size of age groups, comparing 2011 with 2001. These changes are driven by the age structure of the population in 2001, birth rates, death rates and migration in the following ten-year period. There have been considerable changes in these demographic trends across areas in Scotland as presented in recent publications of [The Registrar General's Annual Review of Demographic Trends](#). Further analysis into the changes in local areas will be published following work to explain the difference between the 2011 Census based population estimates and the rolled-forward mid-year population estimates based on the 2001 Census, and following the release of census statistics on migration.

Sections 4.1, 4.2 and 4.3 discuss further the changes in population in different age groups.

Table 2: Census day usually resident population by council area, 2001 and 2011; Percentage change in population by age group and council area, 2001 to 2011

Council area	Population 2001 ¹	Population 2011 ¹	% change 2001 to 2011 ²	% change 2001 to 2011 ² in population:		
				aged under 15	aged 15 to 64	aged 65 and over
SCOTLAND	5,062,000	5,295,400	4.6	-5.8	6.0	10.6
Aberdeen City	212,100	222,800	5.0	-7.2	9.1	-1.2
Aberdeenshire	226,900	253,000	11.5	-0.3	11.9	25.7
Angus	108,400	116,000	7.0	-0.5	6.0	17.8
Argyll & Bute	91,300	88,200	-3.4	-16.6	-5.2	15.0
Clackmannanshire	48,100	51,400	7.0	-6.7	8.5	18.5
Dumfries & Galloway	147,800	151,300	2.4	-10.4	1.7	16.7
Dundee City	145,700	147,300	1.1	-8.0	4.9	-4.5
East Ayrshire	120,200	122,700	2.1	-9.9	3.5	10.1
East Dunbartonshire	108,200	105,000	-3.0	-16.3	-5.0	21.8
East Lothian	90,100	99,700	10.7	-1.7	13.6	14.1
East Renfrewshire	89,300	90,600	1.4	-6.9	0.4	16.3
Edinburgh, City of	448,600	476,600	6.2	-1.2	9.5	-0.9
Eilean Siar	26,500	27,700	4.5	-7.2	4.7	13.8
Falkirk	145,200	156,000	7.4	0.1	8.2	13.0
Fife	349,400	365,200	4.5	-6.0	5.4	12.9
Glasgow City	577,900	593,200	2.7	-10.0	8.7	-9.4
Highland	208,900	232,100	11.1	0.9	10.7	24.1
Inverclyde	84,200	81,500	-3.2	-16.1	-1.9	5.6
Midlothian	80,900	83,200	2.8	-8.1	3.3	14.6
Moray	86,900	93,300	7.3	-3.5	6.8	21.7
North Ayrshire	135,800	138,200	1.7	-10.5	1.1	18.5
North Lanarkshire	321,100	337,800	5.2	-1.0	5.3	13.3
Orkney Islands	19,200	21,400	10.9	-7.1	10.9	31.1
Perth & Kinross	134,900	146,700	8.7	-2.3	9.0	18.1
Renfrewshire	172,900	174,900	1.2	-8.6	1.5	11.2
Scottish Borders	106,800	113,900	6.7	-4.7	6.4	18.2
Shetland Islands	22,000	23,200	5.3	-7.5	5.7	22.4
South Ayrshire	112,100	112,800	0.6	-9.5	-0.5	13.2
South Lanarkshire	302,200	313,800	3.8	-6.9	4.2	15.5
Stirling	86,200	90,200	4.7	-4.5	4.5	16.0
West Dunbartonshire	93,400	90,700	-2.8	-13.9	-0.6	1.1
West Lothian	158,700	175,100	10.3	1.3	9.6	30.9

¹ Population data are rounded to the nearest hundred.

² Percentages are calculated from unrounded data.

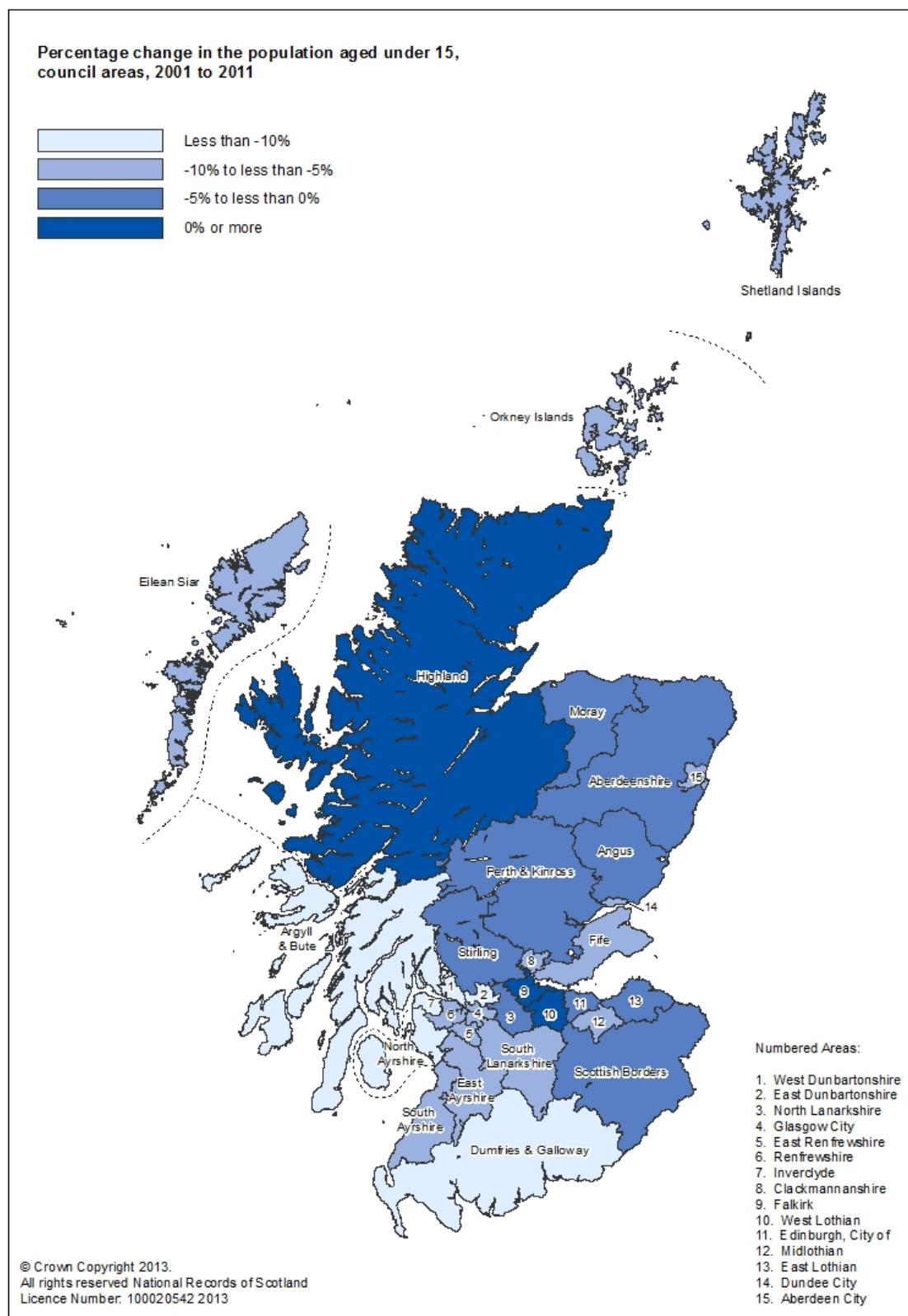
Download this as [Excel](#), [csv](#), [PDF](#)

4.1 Change in the population aged under 15, 2001 to 2011

There were 854,100 people aged under 15 in Scotland on census day 2011, a decrease of 52,800 (6 per cent) compared with 2001. Within this age band however, there was a 6 per cent increase in children aged under 5 across Scotland. The decrease in the number of people aged under 15, therefore, was due to the number of children aged 5 to 14 decreasing by 68,700 (11 per cent) between 2001 and 2011.

There were variations in the level of decrease in the population aged under 15 by council area. The data from which Figure 4 is derived (Table A5 in Appendix 1) show the greatest percentage decreases were in Argyll & Bute (17 per cent), East Dunbartonshire and Inverclyde (both 16 per cent).

The main factors determining trends in the number of people aged under 5 in the population are changes in fertility and changes in the number of women of childbearing age.

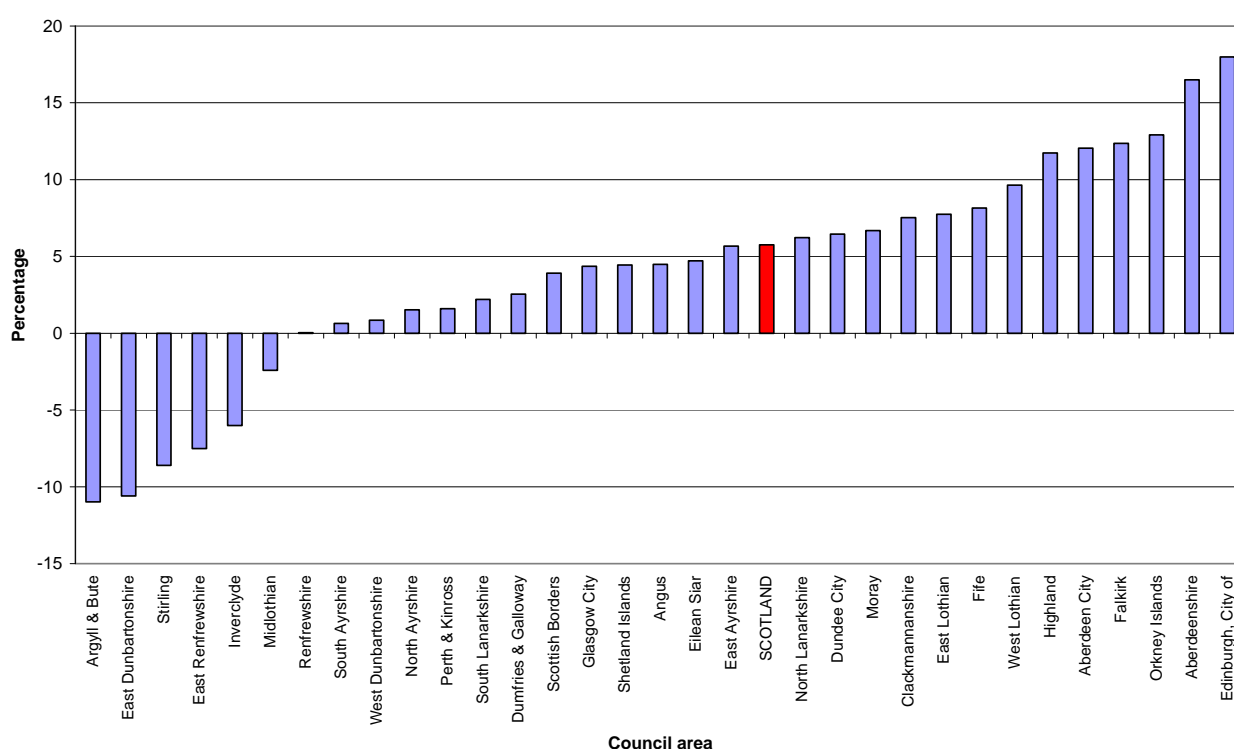
Figure 4: Percentage change in population aged under 15 by council area, 2001 to 2011

Download this as [Excel](#), [csv](#), [PDF](#)
See Table A5 in Appendix 1.

4.1.1 Change in the population aged under 5, 2001 to 2011

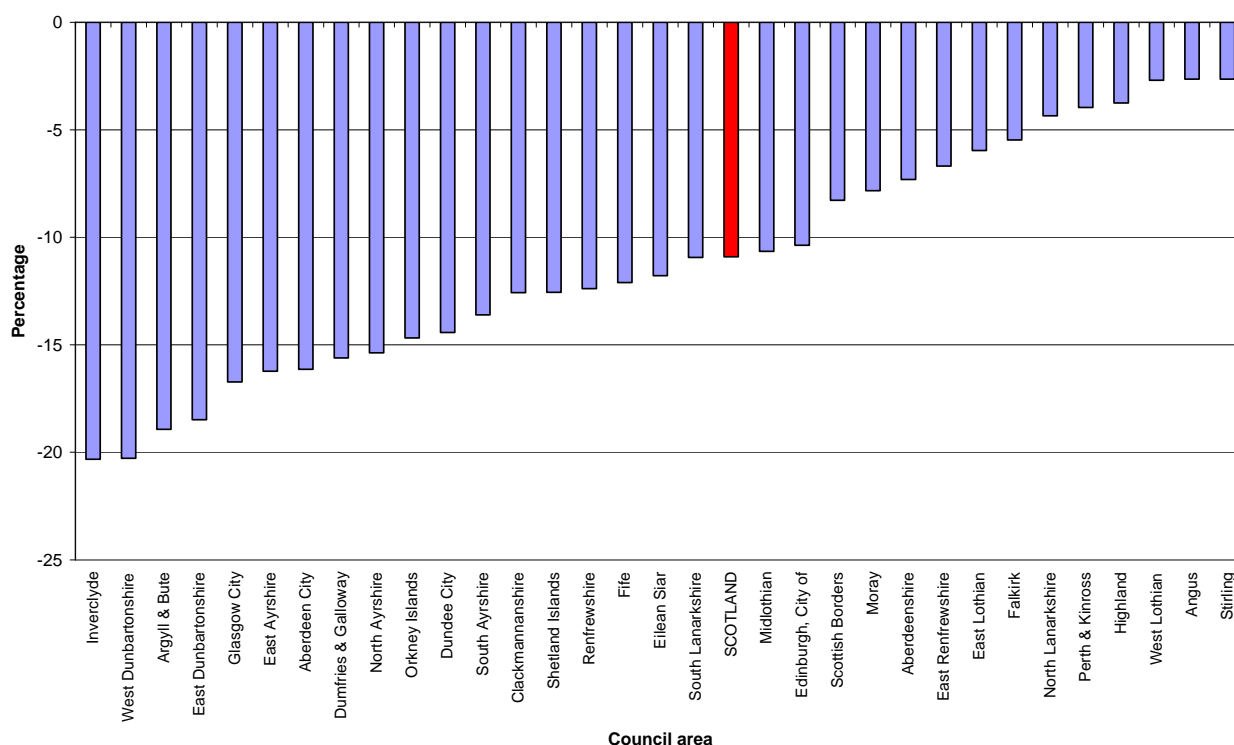
Figure 5 shows that most council areas saw an increase between 2001 and 2011 in the number of pre-school children (those aged under 5), with the biggest percentage increases recorded in City of Edinburgh and Aberdeenshire (increases of 18 per cent and 17 per cent respectively). The only council areas to experience decreases in the percentage population aged under 5 were Argyll & Bute and East Dunbartonshire (each around 11 per cent), Stirling (9 per cent), East Renfrewshire (8 per cent), Inverclyde (6 per cent) and Midlothian (2 per cent).

Figure 5: Percentage change in the population aged under 5 by council area, 2001 to 2011



Download this as [Excel](#), [csv](#), [PDF](#)
See Table A6 in Appendix 1.

All council areas experienced a decrease in the population aged 5 to 14 between 2001 and 2011, as shown by Figure 6. The council areas with the biggest percentage decreases were Inverclyde and West Dunbartonshire (each showing decreases of 20 per cent).

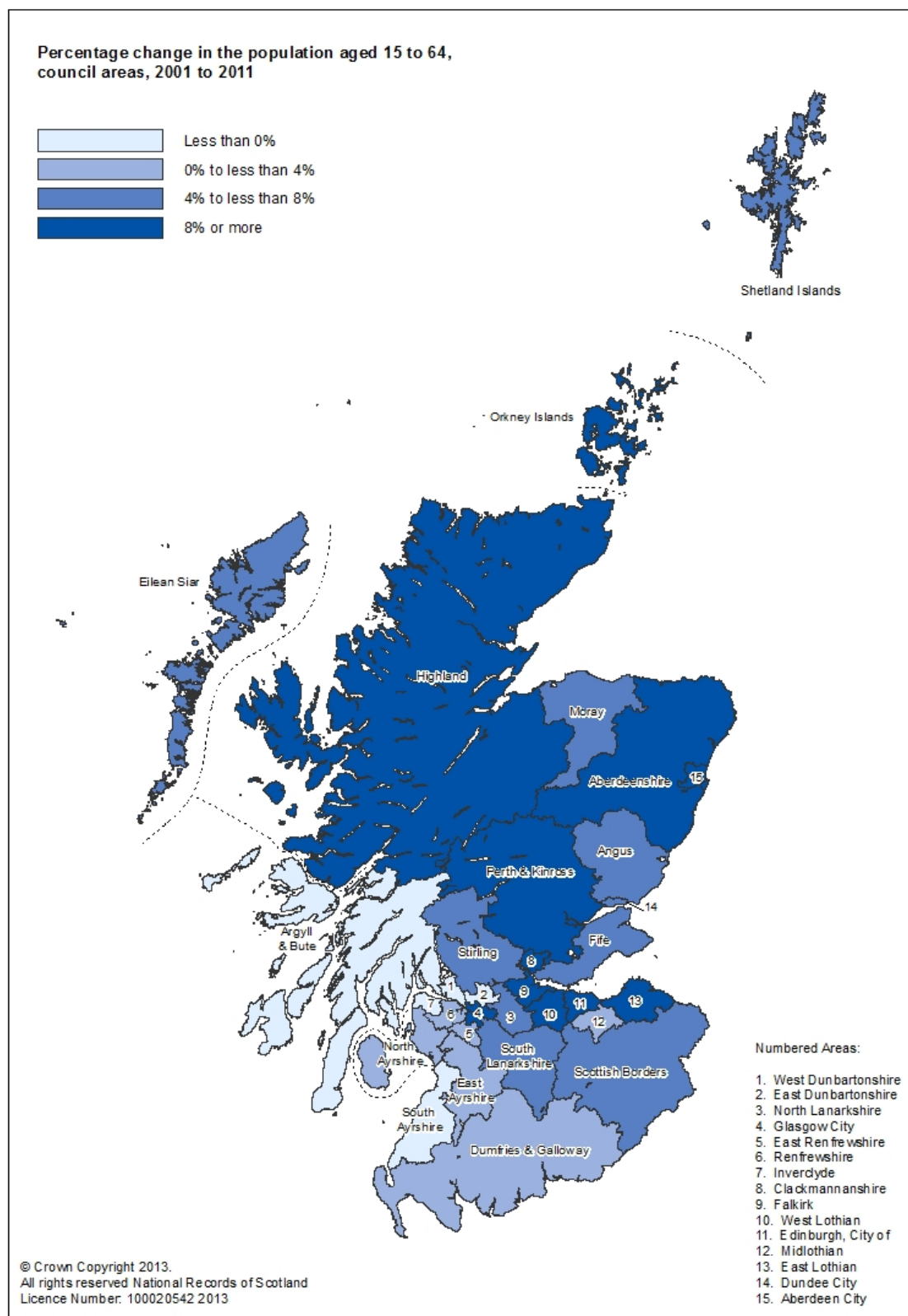
Figure 6: Percentage change in the population aged 5 to 14 by council area, 2001 to 2011

Download this as [Excel](#), [csv](#), [PDF](#)
 See Table A7 in Appendix 1

4.2 Change in the population aged 15 to 64, 2001 to 2011

Most council areas experienced an increase in the 15 to 64 year old population between the 2001 and 2011 Censuses, as shown by the map in Figure 7, with only Argyll & Bute, East Dunbartonshire, Inverclyde, South Ayrshire and West Dunbartonshire having decreases. East Lothian and Aberdeenshire had the biggest percentage increases in this age group, 14 per cent and 12 per cent respectively. The factors contributing to this increase are mainly the recent in-migration trends into Scotland, and also the baby boom in 1947 and the 1960s who are part of this age group.

Figure 7: Percentage change in the population aged 15 to 64 by council area, 2001 to 2011

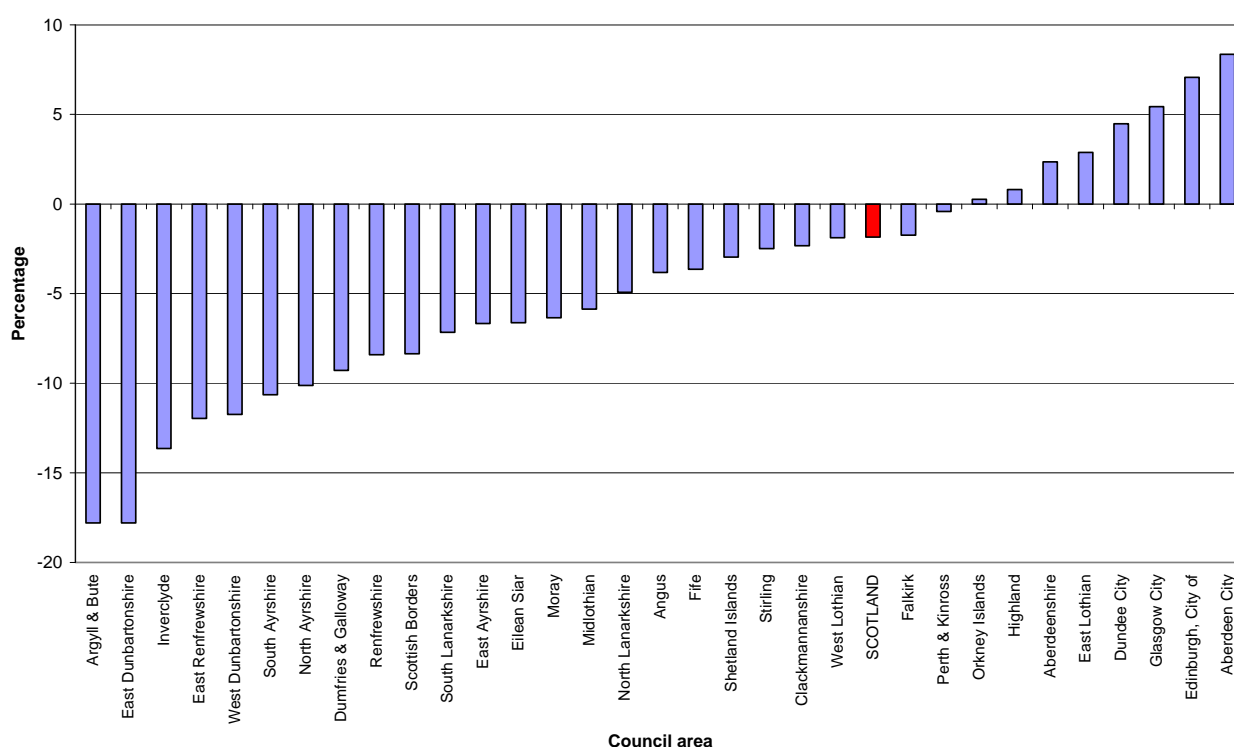


Download this as [Excel](#), [csv](#), [PDF](#)
See Table A8 in Appendix 1.

4.2.1 Percentage change in the population aged 15 to 39, 2001 to 2011

Despite seeing an increase in the percentage of the population aged 15 to 64, most council areas showed decreases in their population aged 15 to 39, i.e in the younger working age group (see Figure 8). The main exceptions to this pattern were the four council areas containing large cities (Aberdeen City, City of Edinburgh, Glasgow City and Dundee City), and also East Lothian, Aberdeenshire, Highland and Orkney Islands. The increase between 2001 and 2011 in the 15 to 39 year old population in the four councils containing large cities was mainly accounted for by increases in the population aged 20 to 29 (data derived from Table A1 in Appendix 1).

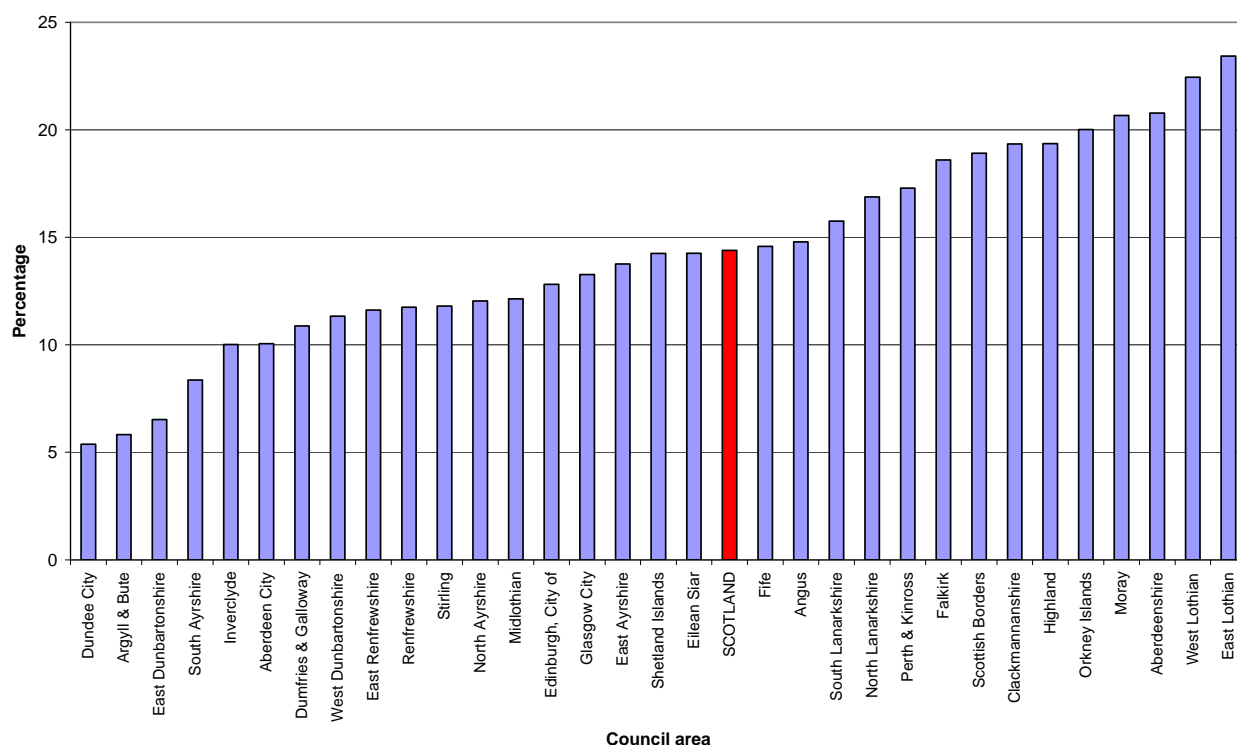
Figure 8: Percentage change in the population aged 15 to 39 by council area, 2001 to 2011



Download this as [Excel](#), [csv](#), [PDF](#)
See Table A9 in Appendix 1

4.2.2 Percentage change in the population aged 40 to 64, 2001 to 2011

In contrast to the picture of a general decrease between 2001 and 2011 in the 15 to 39 year old population, all council areas experienced an increase in the older working age population (those aged 40 to 64) (see Figure 9). The biggest percentage increases for this latter age group were in East Lothian (23 per cent) and West Lothian (22 per cent), and the smallest in Dundee City (5 per cent) and Argyll & Bute (6 per cent).

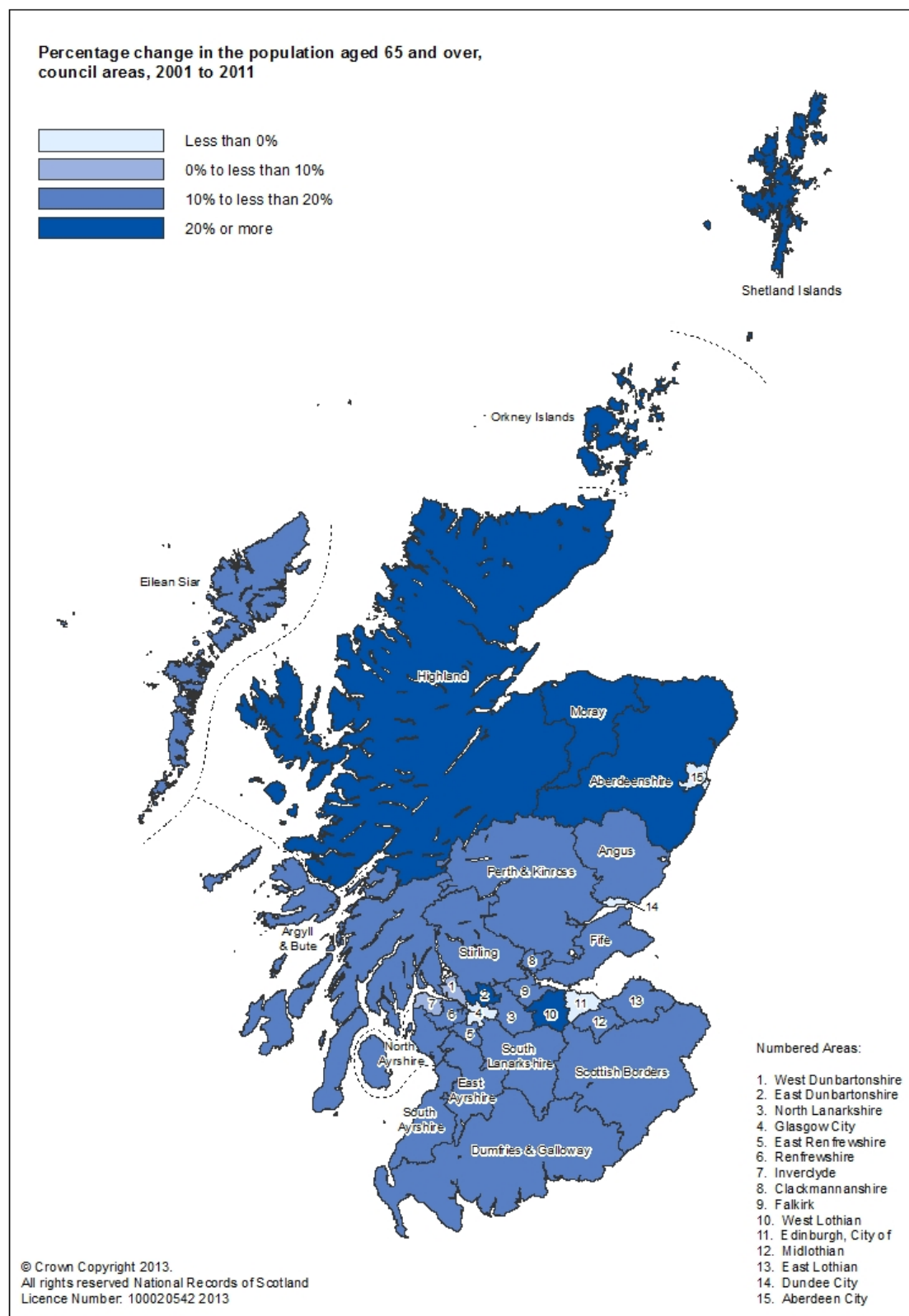
Figure 9: Percentage change in the population aged 40 to 64 by council area, 2001 to 2011

Download this as [Excel](#), [csv](#), [PDF](#)
 See Table A10 in Appendix 1.

4.3 Change in the population aged 65 and over, 2001 to 2011

The number of people aged 65 and over increased by 85,400 (11 per cent) since 2001 and now represents 17 per cent of the population. All council areas apart from Glasgow City, Dundee City, Aberdeen City and City of Edinburgh saw increases in their population aged 65 and over between 2001 and 2011. Orkney Islands and West Lothian experienced the biggest percentage increases (of around 31 per cent). This pattern of change was also generally reflected in the 65 to 79 year old age group (see Table A12 in Appendix 1).

Figure 10: Percentage change in the population aged 65 and over by council area, 2001 to 2011

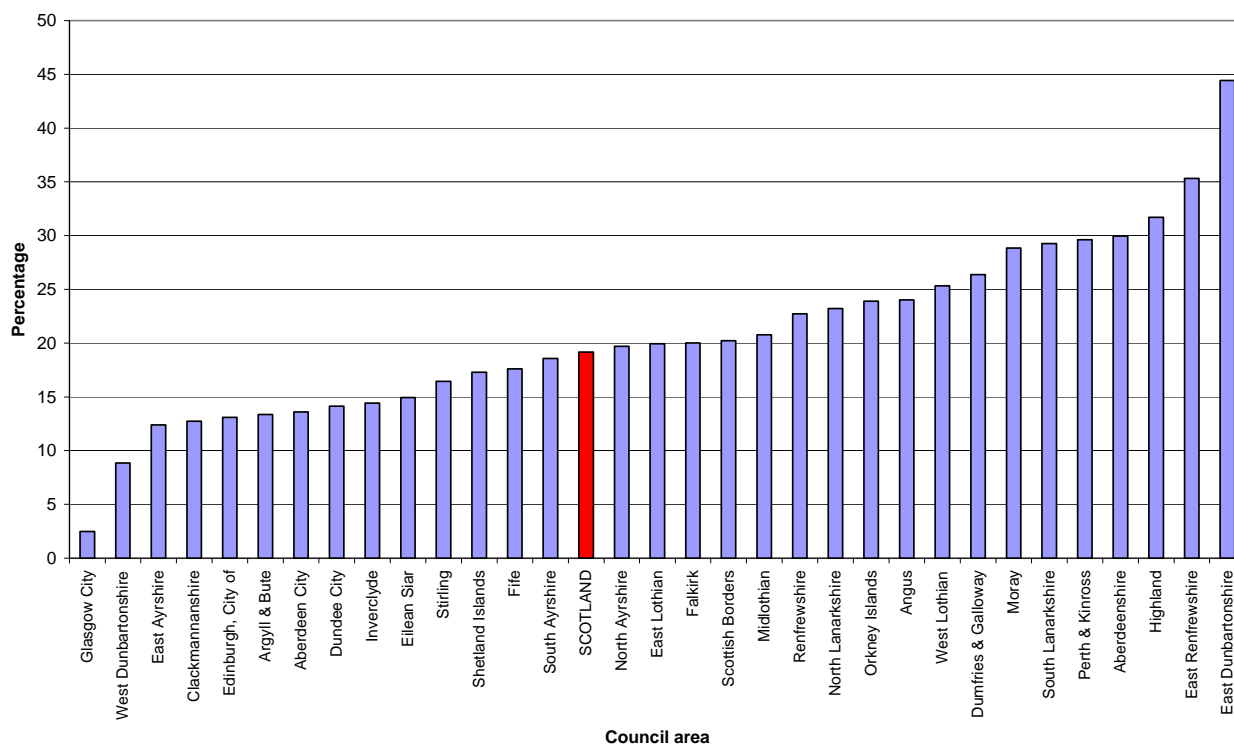


Download this as [Excel](#), [csv](#), [PDF](#)
See Table A11 in Appendix 1.

4.3.1 Percentage change in the population aged 80 and over, 2001 to 2011

There were 230,400 people aged 80 and over in 2011 compared with 193,300 in 2001 (an increase of 19 per cent). Figure 11 shows the population aged 80 and over increased in all council areas between 2001 and 2011. The greatest percentage increase in this age group was in East Dunbartonshire (44 per cent) and the smallest in Glasgow City (3 per cent).

Figure 11: Percentage change in population aged 80 and over by council area, 2001 to 2011



Download this as [Excel](#), [csv](#), [PDF](#)
See Table A13 in Appendix 1.

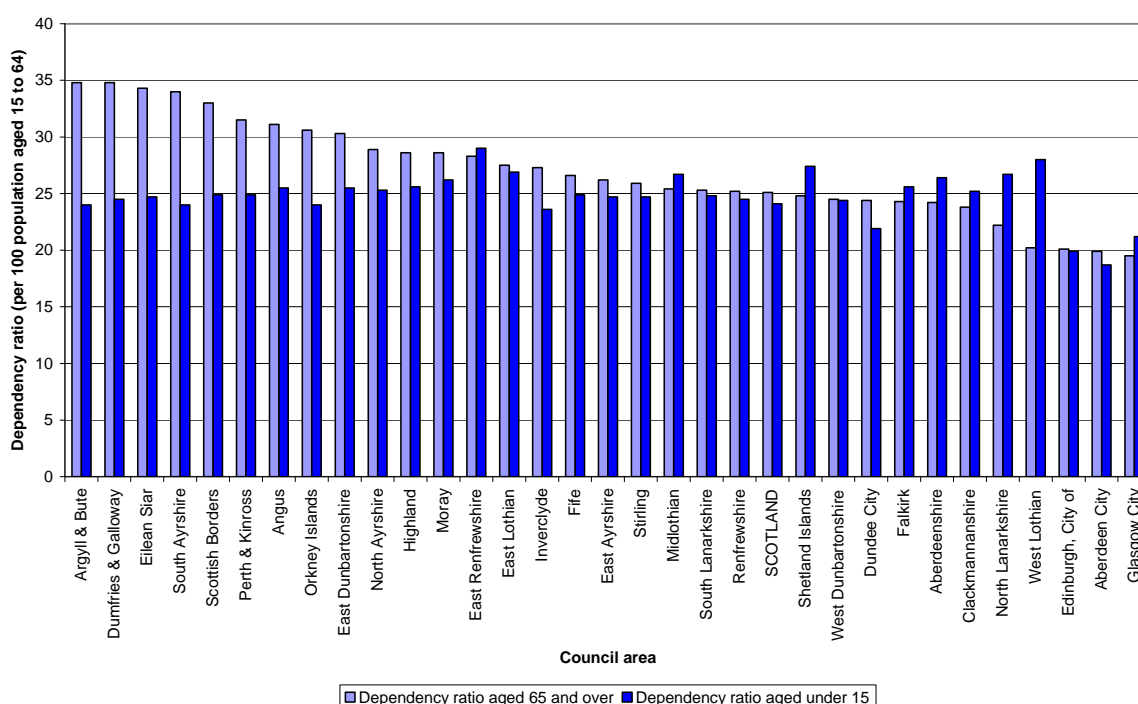
5. Population dependency ratios

Another way of looking at the age structure of the population is to look at dependency ratios. Dependency ratios can be defined in different ways, but here two are calculated: the number of older people aged 65 and over per 100 people aged 15 to 64 (i.e. mainly, although not wholly, those of working age), and the number of children (defined as aged under 15 in this bulletin due to the underlying data only being available down to 5-year age band) per 100 people aged 15 to 64.

These ratios should be interpreted with care. For example, a simple interpretation is the number of older people or children who are 'dependent' on people aged 15 to 64, the assumption being that most older people and children are not economically active. The reality is of course much more complex, since – to give just a few reasons – many people of typically working age are unemployed or economically inactive (e.g. at school or university), the age at which people retire varies greatly and many retired people are financially independent. However, these 'dependency' ratios provide a useful way to examine the relative age structure of the population.

The average elderly dependency ratio for Scotland is 25, i.e. 25 people aged 65 and over per 100 people aged 15 to 64 and the younger persons dependency ratio average is 24. Figure 12 shows that the council areas with the highest elderly dependency ratios are Argyll & Bute and Dumfries & Galloway (each with a ratio of 35). Despite Scotland having a generally ageing population, not all council areas show a higher elderly dependency ratio than younger persons dependency ratio. The council areas with the highest younger persons dependency ratio are East Renfrewshire and West Lothian (with ratios of 29 and 28, compared with their elderly dependency ratios of 28 and 20 respectively).

Figure 12: Dependency ratios for those aged 65 and over and under 15 by council area, 2011 (ranked by the dependency ratio for those aged 65 and over)



Download this as [Excel](#), [csv](#), [PDF](#)
See Table A15 in Appendix 1.

6. Households

6.1 Household and communal establishment residents, 2011

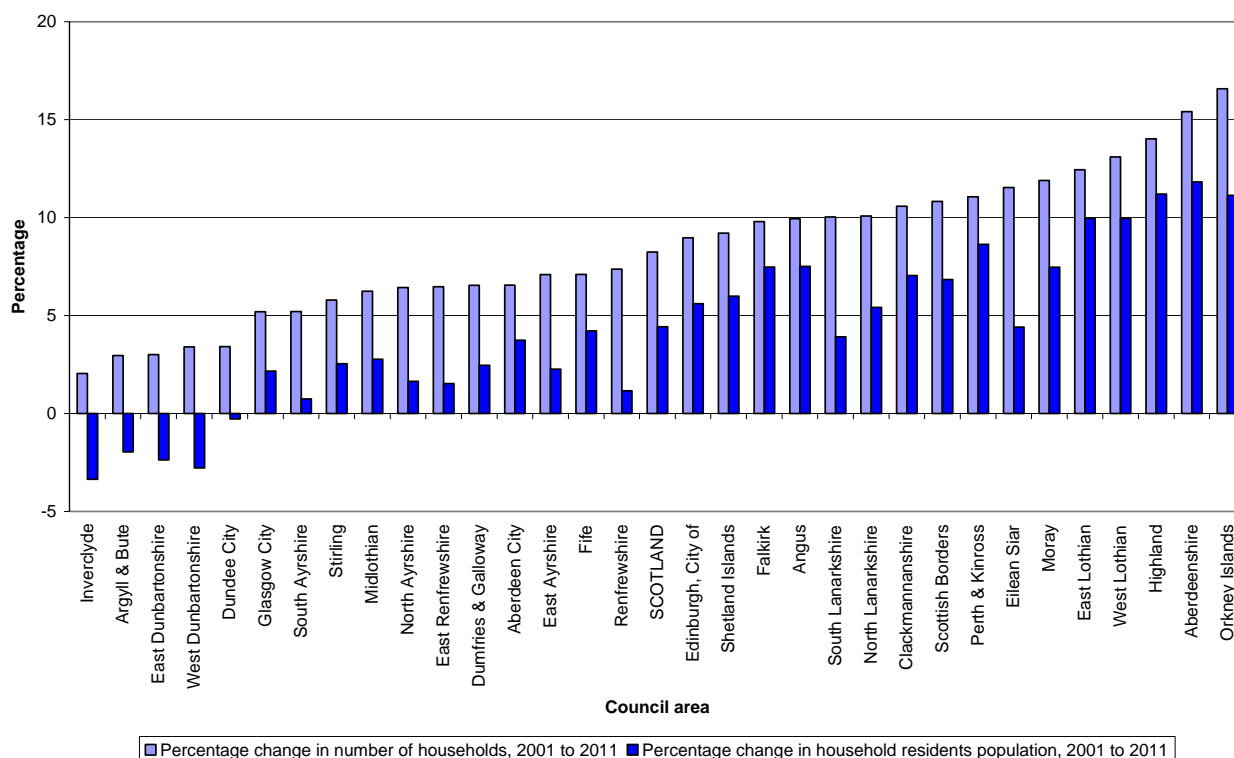
Most (98 per cent) of Scotland's population in 2011 lived in households, with the remaining 2 per cent in communal establishments, such as university halls of residence, prisons and care homes. The percentage of communal establishment residents was generally highest in councils with larger cities and significant student populations. It was 5 per cent in Stirling, 4 per cent in Aberdeen City and 4 per cent in Dundee City.

6.2 Number of households in Scotland, 2011 and 2001

The number of households in Scotland with at least one usual resident on census day in 2011 was estimated to be 2,372,780 – the highest ever. Since the 2001 Census, the number of households increased by 180,530 (8 per cent), from 2,192,250. Increases were recorded in all council areas, with the biggest percentage increases in the Orkney Islands (17 per cent), Aberdeenshire (15 per cent) and Highland (14 per cent) (see Table A17 in Appendix 1).

Between 2001 and 2011, the number of households has increased faster than the number of people in households, in every council area. As a result of this, the average household size decreased in all council areas, with more people living alone or in smaller households.

Figure 13: Percentage change in the number of households and the household resident population¹, by council area, 2001 to 2011



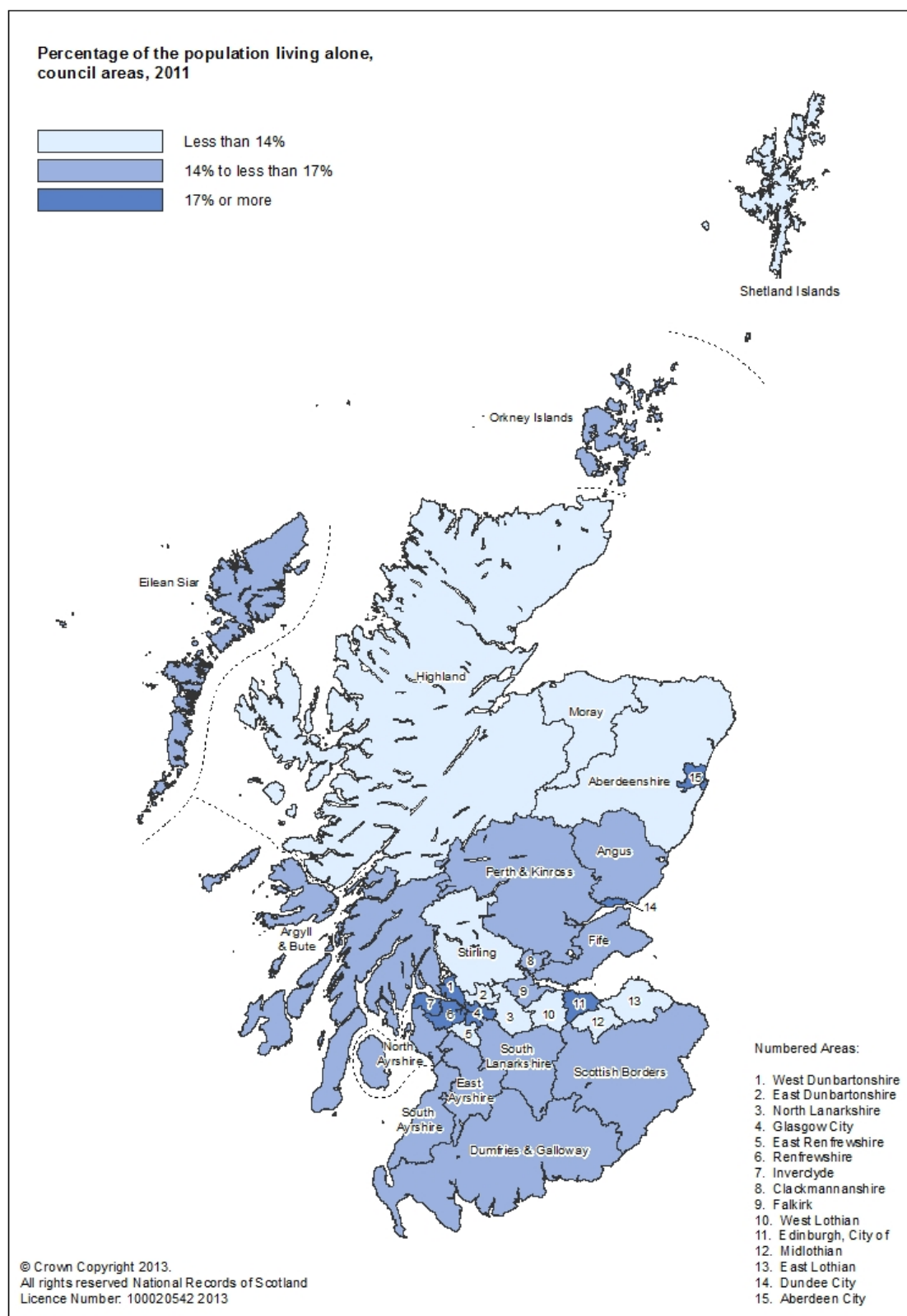
¹ The usual household resident population is different from the usually resident population discussed in earlier sections, as it only includes people who are usually resident in households and excludes communal establishment residents.

Download this as [Excel](#), [csv](#), [PDF](#)
See Table A17 in Appendix 1.

6.3 Change in household size, 2001 to 2011

The average household size in Scotland in 2011 was 2.19 people per household and ranged from 2.02 people per household in Glasgow City up to 2.42 in East Renfrewshire. Average household size tends to be lower in the cities. The 2011 Census confirmed the long-term trend towards smaller households in Scotland. The average household size has fallen steadily from 3.19 people per household in 1961 to 2.19 in 2011.

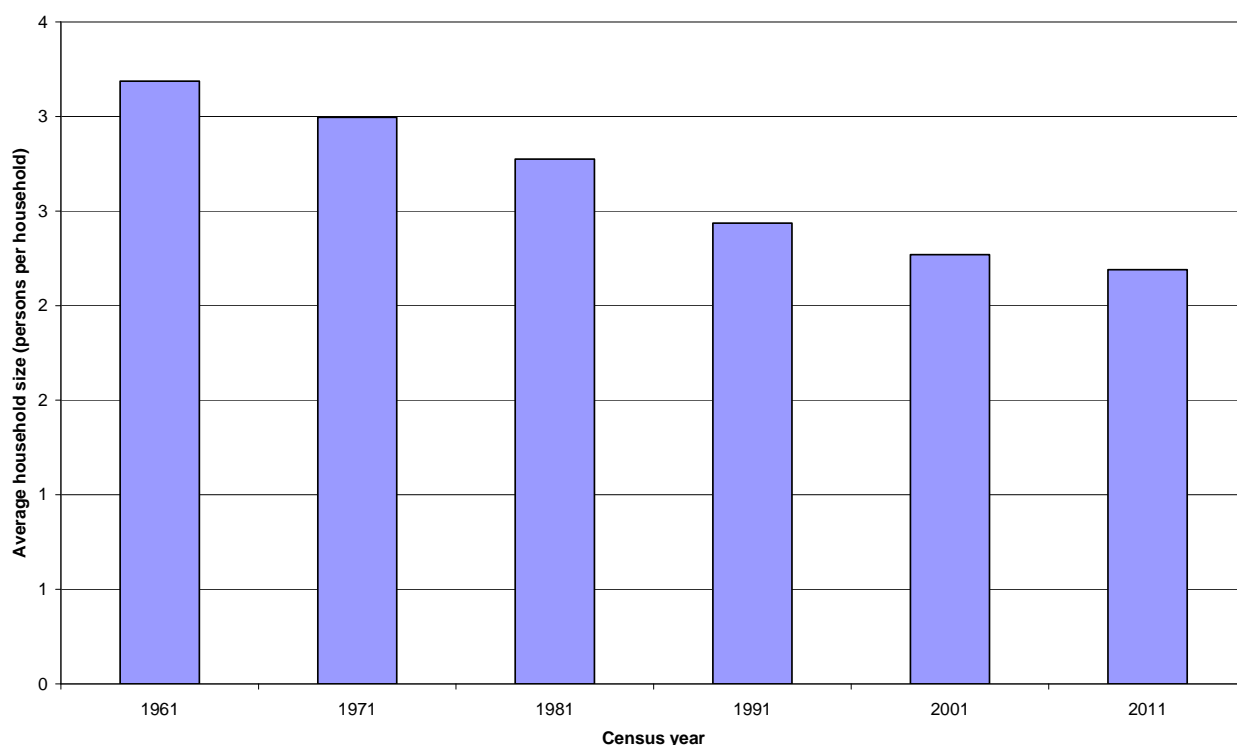
In Scotland in 2011, the percentage of the total usually resident population living alone was 16 per cent. This varied between council areas, as seen in Figure 14. In Aberdeenshire, 11 per cent of the population live alone compared with 21 per cent in Glasgow City.

Figure 14: Percentage of the population living alone, by council area, 2011Download this as [Excel](#), [csv](#), [PDF](#)

Derived from data in Tables A4 and A16 in Appendix 1.

6.4 Change in household size, 1961 to 2011

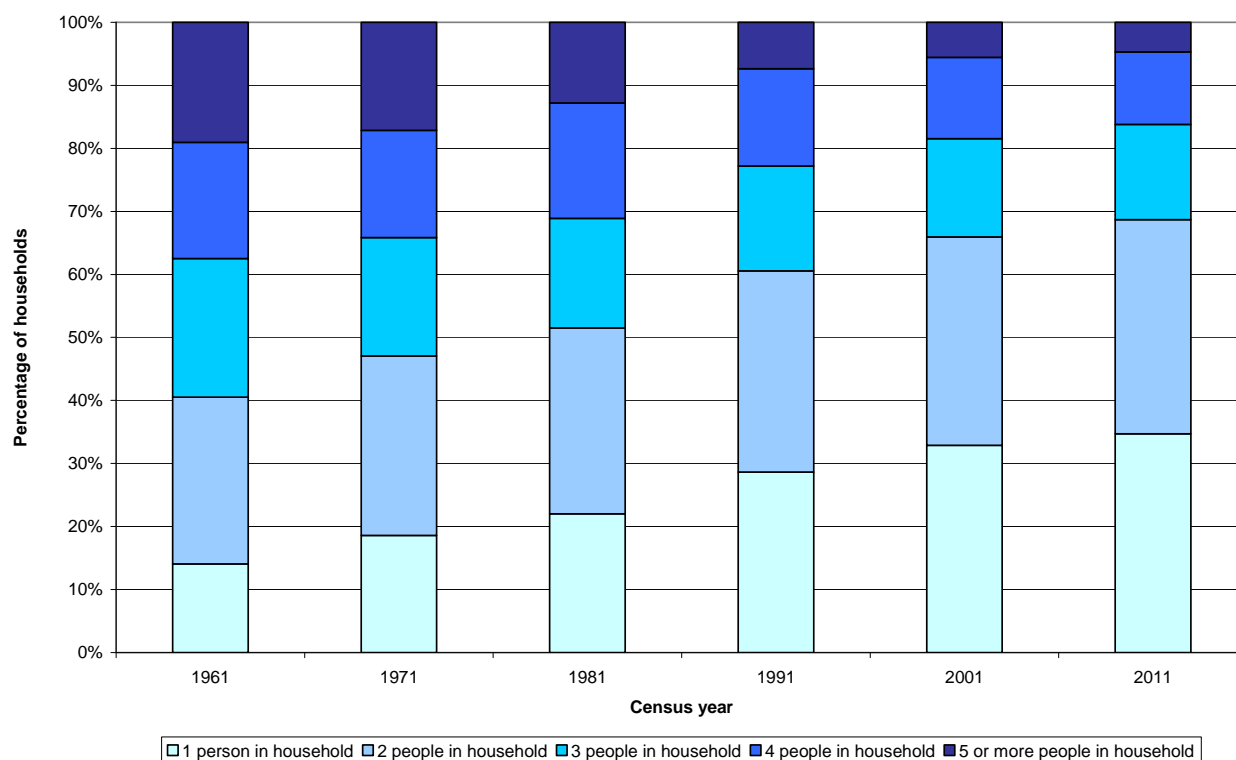
Figure 15: Average household size (number of people per household), Scotland, 1961 to 2011



Download this as [Excel](#), [csv](#), [PDF](#)

See Table A19 in Appendix 1.

In 2011, one-person households accounted for 35 per cent of all households in Scotland, ranging from 27 per cent in Aberdeenshire to 43 per cent in Glasgow City. Between 1961 and 2011, the percentage of one- and two-person households increased substantially (from 41 per cent to 69 per cent of all households), while the percentage of households with three or more people almost halved. Figure 16 shows one-person households have gone from being the least common household type in 1961 (14 per cent of all households) to the most common household type in 2011 (35 per cent) (see Table A19 in Appendix 1).

Figure 16: Household size, total Scotland, 1961 to 2011

Download this as [Excel](#), [csv](#), [PDF](#)
 See Table A19 in Appendix 1.

7. Background notes

1. National Records of Scotland¹ (NRS) is responsible for carrying out the 2011 Census in Scotland. Simultaneous but separate censuses took place in England & Wales and Northern Ireland. These were run by the Office for National Statistics (ONS) and the Northern Ireland Statistics and Research Agency (NISRA) respectively.

2. The census provides estimates of the characteristics of all people and households in Scotland on census day, 27 March 2011.

3. In Scotland, the aim of the 2011 Census was to achieve a full census return for all people who were usually resident in Scotland for six months or more. A full census return was therefore required for people from outside the UK who had stayed or intended to stay in the UK for a total of six months or more. Anyone with a permanent UK address who was outside the UK on census day if they intended to be outside the UK for less than 12 months was also to be included in the census questionnaire for their UK address. This is defined as the **population base for enumeration**. The **main outputs population base** for the 2011 Census statistics is defined to be usual residents of the UK, that is anyone who, on census day, was in the UK and had stayed or intended to stay in the UK for a period of 12 months or more, or had a permanent UK address and was outside the UK and intended to be outside the UK for less than 12 months. (NRS made no specific adjustment for the presence of 6-12 months migrants among the persons counted in the census – [link for further details](#).)

4. The coverage of the population in an area is those who are usually resident there. A person's place of usual residence is in most cases the address at which they stay the majority of the time. For many people this will be their permanent or family home. Students are treated as being resident at their term-time address. If a member of the armed forces did not have a permanent or family address at which they are usually resident, they were recorded as usually resident at their base address.

5. As in 2001, adjustments for census under-enumeration were built into the census process and as such the 2011 Census statistics represent the full population. Similar adjustments were not made in the censuses prior to 2001. Figures for censuses up to and including 1971 are based on persons present on census day; figures for the 1981 and 1991 census are based on usual residents.

6. The numbers presented in this bulletin may not sum to totals or sub-totals as all figures have been rounded independently to the nearest hundred (for population estimates) or to the nearest ten (for household estimates). Similarly, percentages have generally been rounded in the commentary to the nearest whole number for ease of reading. The data from the 2011 Census have yet to be subjected to further processes to ensure respondent confidentiality in future releases. Any changes introduced by these processes are likely to be small and within the limits of the rounding that has been applied.

¹ National Records of Scotland (NRS) was created by the amalgamation in April 2011 of the General Register Office for Scotland (GROS) and the National Archives of Scotland (NAS).

7. Census population estimates by age relate to a person's age in years on their last birthday up to and including census day, 27 March 2011.

8. All key terms used in this publication, such as usual residents, are explained in the 2011 Census Glossary.

Mid-year population estimates

9. The mid-year estimates are an annual series of population estimates. They are on a consistent basis and, accordingly, population change over time should be measured through the mid-year estimates. Up to 1971, the census statistics are the mid-year estimates for the relevant census years. In recent years, it has become acknowledged that the census may not include every person and hence subsequent mid-year estimates, while based on the census, have incorporated adjustments to the census. Thus, in particular, the mid-year estimates for 1991 differ from the census statistics to allow for estimated census under-enumeration. In 1991, this amounted to an estimated 85,000 people.

10. NRS publishes annual mid-year population estimates for the population at 30 June each year. The statistics from the First Release of the 2011 Census results will be used to rebase the 2011 mid-year population estimates. These are scheduled for release in June/July 2013. Following this, the mid-year population estimates for 2002-2010 will also be re-based using the 2011 Census; the re-based mid-year population estimates will be published in October/November 2013. Reports explaining the difference between the 2011 Census based population estimates and the rolled-forward mid-year population estimates based on the 2001 Census will be published along with these releases.

11. When the rebased mid-year estimates for 2011 become available, it will be recommended that population change between 2001 and 2011 is addressed through the mid-year estimates. In the interim, the adjustments made to the 2001 and 2011 Censuses for under-enumeration, mean that population change over the decade can be examined through comparison of the 2001 and 2011 Censuses.

Designation as National Statistics

12. The United Kingdom Statistics Authority has designated these statistics as National Statistics. This means they are produced to the high professional standards set out in the Code of Practice for Official Statistics. They are produced free from any political interference.

Protecting personal census information

13. Personal census information is kept confidential by NRS, and is protected by law. Census records are not released for 100 years.

14. The census results are provided in aggregate format; no attributes of individuals can be identified from the information published.

15. Information on the measures taken to protect the confidentiality of personal census information is published on the [NRS website](#).

8. Further results

This bulletin represents the second phase of the first release of Scotland's 2011 Census statistics; the initial set of figures was published on 17 December 2012 in [Release 1A](#). More information from Scotland's Census will be released in stages over the next year. The [2011 outputs prospectus](#) describes this in more detail, including when results for lower levels of geography will be available. Release 1C, scheduled for May 2013, will provide unrounded figures of the population estimates by single year of age and sex, for Scotland and for each council area.

Statistics for the whole of the UK from the 2011 Census will be compiled and published on the relevant area in the [UK census website](#).

Please contact our Customer Services if you need any further information.

Email: customer@gro-scotland.gsi.gov.uk

If you have comments or suggestions that would help us improve our outputs or our standards of service, please contact:

Amy Wilson
Senior Statistician
National Records of Scotland
Room 2/3/5
Ladywell House
Ladywell Road
Edinburgh
EH12 7TF.

Phone: 0131 314 4207

Email: amy.wilson@gro-scotland.gsi.gov.uk

© Crown Copyright 2013. You may reproduce brief extracts from the material in this publication as long as you fully acknowledge the source.

Appendix 1: Tables

List of Tables

[Table A1](#): Census day usually resident population by five-year age group and council area, 2011

[Table A2](#): Census Day usually resident male population by five-year age group and council area, 2011

[Table A3](#): Census Day usually resident female population by five-year age group and council area, 2011

[Table A4](#): Census day usually resident population by council area, 2001 and 2011

[Table A5](#): Census day usually resident population aged under 15 by council area, 2001 and 2011

[Table A6](#): Census day usually resident population aged under 5 by council area, 2001 and 2011

[Table A7](#): Census day usually resident population aged 5 to 14 by council area, 2001 and 2011

[Table A8](#): Census day usually resident population aged 15 to 64 by council area, 2001 and 2011

[Table A9](#): Census day usually resident population aged 15 to 39 by council area, 2001 and 2011

[Table A10](#): Census day usually resident population aged 40 to 64 by council area, 2001 and 2011

[Table A11](#): Census day usually resident population aged 65 and over by council area, 2001 and 2011

[Table A12](#): Census day usually resident population aged 65 to 79 by council area, 2001 and 2011

[Table A13](#): Census day usually resident population aged 80 and over by council area, 2001 and 2011

[Table A14](#): Census day usually resident population by sex and council area, 2011

[Table A15](#): Census day population dependency ratios by council area, 2001 and 2011

[Table A16](#): Households by number of usual residents in household and council area, census day 2011

[Table A17](#): Households, usual residents of households and average household size by council area, 2001 and 2011

[Table A18](#): Census day usually resident population by whether living in a household or communal establishment, by council area, 2011

[Table A19](#): Usual residents of households, households by number of usual residents in household, average household size, Scotland, 1961 to 2011

Table A1: Census day usually resident population by five-year age group and council area, 2011

Council area	Persons All ages	Persons 0 to 4	Persons 5 to 9	Persons 10 to 14	Persons 15 to 19	Persons 20 to 24	Persons 25 to 29	Persons 30 to 34	Persons 35 to 39
SCOTLAND	5,295,400	292,800	269,700	291,600	330,800	363,900	345,600	321,700	340,000
Aberdeen City	222,800	11,500	9,200	9,400	14,700	23,200	21,200	17,000	14,700
Aberdeenshire	253,000	15,100	14,000	15,100	15,300	13,100	13,200	14,600	17,400
Angus	116,000	6,000	6,100	6,800	6,900	6,000	6,000	6,000	6,900
Argyll & Bute	88,200	4,100	4,300	4,900	5,100	4,400	4,200	3,900	4,800
Clackmannanshire	51,400	2,900	2,700	3,100	3,200	2,900	2,900	3,000	3,500
Dumfries & Galloway	151,300	7,700	7,400	8,300	8,800	7,700	7,400	6,700	8,200
Dundee City	147,300	7,800	6,800	7,400	10,800	15,300	11,700	8,900	8,000
East Ayrshire	122,700	6,800	6,400	6,900	7,700	7,500	7,000	6,700	7,900
East Dunbartonshire	105,000	5,200	5,700	6,400	7,000	6,000	4,300	4,500	5,900
East Lothian	99,700	5,900	5,500	5,900	6,400	5,300	4,800	5,000	6,500
East Renfrewshire	90,600	5,000	5,600	6,100	6,100	5,100	3,500	4,100	5,300
Edinburgh, City of	476,600	26,200	20,500	21,100	28,500	47,800	45,300	38,500	34,100
Eilean Siar	27,700	1,400	1,400	1,500	1,600	1,200	1,300	1,400	1,600
Falkirk	156,000	9,300	8,400	8,900	9,300	8,800	9,300	9,800	11,300
Fife	365,200	20,800	19,100	20,200	22,700	24,100	20,800	20,800	23,000
Glasgow City	593,200	33,000	27,100	29,300	39,400	56,600	55,000	46,100	40,100
Highland	232,100	12,700	12,400	13,400	13,300	11,600	12,800	12,500	13,900
Inverclyde	81,500	4,200	4,000	4,500	5,100	5,000	4,700	4,300	4,800
Midlothian	83,200	4,900	4,700	5,100	5,200	4,800	4,400	4,700	5,300
Moray	93,300	5,300	4,900	5,600	5,900	5,000	5,300	5,100	5,700
North Ayrshire	138,200	7,400	7,200	8,000	8,800	7,900	7,300	7,100	8,200
North Lanarkshire	337,800	20,600	19,500	20,600	21,400	21,000	21,800	21,500	23,200
Orkney Islands	21,400	1,100	1,000	1,200	1,300	1,100	1,000	1,100	1,200
Perth & Kinross	146,700	7,300	7,300	8,700	8,700	7,500	8,100	7,600	8,400
Renfrewshire	174,900	9,600	9,100	9,900	10,800	11,000	10,700	10,100	10,900
Scottish Borders	113,900	5,700	5,900	6,300	6,400	5,300	5,000	5,100	6,700
Shetland Islands	23,200	1,400	1,300	1,500	1,400	1,300	1,200	1,400	1,500
South Ayrshire	112,800	5,500	5,400	6,200	6,400	6,200	5,500	5,400	6,400
South Lanarkshire	313,800	17,400	16,500	17,900	19,200	17,600	18,200	18,400	20,800
Stirling	90,200	4,400	4,800	5,600	6,600	7,200	4,900	4,500	5,300
West Dunbartonshire	90,700	5,200	4,700	5,000	5,800	5,800	5,800	5,200	5,500
West Lothian	175,100	11,600	10,700	10,800	11,100	10,400	10,800	10,900	12,900

Footnotes

- 1) For the 2011 Census, a usual resident of the UK is anyone who, on census day 2011, was in the UK and had stayed or intended to stay in the UK for a period of 12 months or more, or had a permanent UK address and was outside the UK and intended to be outside the UK for less than 12 months.
- 2) The age of a person is derived from their date of birth. It is their age in years on their last birthday up to and including census day 2011. Dates of birth that imply an age over 115 are treated as invalid and the person's age is imputed.
- 3) Council area boundaries as at 1 April 2011.
- 4) Figures in this table may not add exactly because they have been rounded to the nearest hundred.

Table A1: Census day usually resident population by five-year age group and council area, 2011

Council area	Persons 40 to 44	Persons 45 to 49	Persons 50 to 54	Persons 55 to 59	Persons 60 to 64	Persons 65 to 69	Persons 70 to 74	Persons 75 to 79	Persons 80 and over
SCOTLAND	394,700	410,900	375,800	330,900	336,500	261,200	220,600	178,100	230,400
Aberdeen City	14,800	15,400	14,300	12,800	12,500	8,500	7,700	6,700	9,100
Aberdeenshire	20,100	20,600	18,800	17,400	17,500	12,600	10,000	7,800	10,300
Angus	8,300	9,100	8,300	7,800	8,700	6,700	5,600	4,600	6,200
Argyll & Bute	6,200	6,900	6,500	6,300	7,200	5,900	4,900	3,700	4,900
Clackmannanshire	4,200	4,200	3,700	3,300	3,600	2,800	2,100	1,500	1,800
Dumfries & Galloway	10,600	12,000	11,200	10,800	11,700	9,800	8,200	6,600	8,400
Dundee City	9,300	10,200	9,900	8,000	8,500	6,400	6,000	5,200	7,000
East Ayrshire	9,700	9,800	8,900	7,900	8,300	6,500	5,400	4,300	5,100
East Dunbartonshire	7,800	8,900	8,400	7,300	7,300	5,800	5,200	4,300	5,200
East Lothian	8,000	8,200	7,600	6,300	6,400	5,200	4,300	3,500	4,700
East Renfrewshire	7,000	7,700	7,200	6,000	5,700	4,500	3,900	3,400	4,600
Edinburgh, City of	32,800	32,900	29,900	25,500	25,100	18,100	16,000	13,800	20,600
Eilean Siar	2,100	2,100	2,000	2,000	2,200	1,700	1,500	1,100	1,600
Falkirk	12,600	12,400	11,000	9,500	10,100	7,600	6,500	5,100	6,200
Fife	27,400	28,000	26,100	23,000	25,000	19,500	15,700	12,400	16,500
Glasgow City	43,100	43,500	38,300	31,200	28,400	22,100	20,300	17,300	22,400
Highland	16,900	18,500	17,500	16,600	17,000	13,300	10,600	8,400	10,800
Inverclyde	6,100	6,900	6,300	5,300	5,400	4,300	3,600	3,000	3,800
Midlothian	6,400	6,500	6,100	5,400	5,800	4,300	3,500	2,800	3,300
Moray	7,000	7,200	6,600	6,000	6,400	5,100	4,300	3,500	4,300
North Ayrshire	10,200	10,800	10,000	9,300	9,900	8,000	6,600	5,100	6,200
North Lanarkshire	26,800	26,900	23,600	20,500	20,200	15,700	13,300	10,100	11,400
Orkney Islands	1,600	1,700	1,600	1,500	1,600	1,300	1,100	700	1,000
Perth & Kinross	10,700	11,700	10,600	10,000	10,600	8,500	7,200	5,800	8,100
Renfrewshire	13,700	14,400	13,200	11,000	11,000	8,700	7,500	5,900	7,400
Scottish Borders	8,700	9,200	8,700	8,000	8,900	7,100	5,900	4,600	6,300
Shetland Islands	1,700	1,800	1,600	1,600	1,600	1,200	900	700	900
South Ayrshire	7,900	8,800	8,500	7,900	8,400	7,200	5,900	4,800	6,400
South Lanarkshire	24,700	25,500	23,900	21,100	19,800	15,900	13,300	10,600	13,100
Stirling	6,700	7,100	6,300	5,400	5,800	4,600	3,900	3,100	3,900
West Dunbartonshire	6,900	7,400	6,900	6,000	5,700	4,400	3,700	3,000	3,800
West Lothian	14,700	14,500	12,300	10,300	10,400	8,000	6,300	4,600	4,900

Footnotes

1) For the 2011 Census, a usual resident of the UK is anyone who, on census day 2011, was in the UK and had stayed or intended to stay in the UK for a period of 12 months or more, or had a permanent UK address and was outside the UK and intended to be outside the UK for less than 12 months.

2) The age of a person is derived from their date of birth. It is their age in years on their last birthday up to and including census day 2011. Dates of birth that imply an age over 115 are treated as invalid and the person's age is imputed.

3) Council area boundaries as at 1 April 2011.

4) Figures in this table may not add exactly because they have been rounded to the nearest hundred.

Download this as [Excel](#), [csv](#), [PDF](#)

Table A2: Census Day usually resident male population by five-year age group and council area, 2011

Council area	Males All ages	Males 0 to 4	Males 5 to 9	Males 10 to 14	Males 15 to 19	Males 20 to 24	Males 25 to 29	Males 30 to 34	Males 35 to 39
SCOTLAND	2,567,400	149,200	138,000	149,600	168,100	181,100	169,900	158,600	166,200
Aberdeen City	110,100	5,900	4,700	4,900	7,200	11,400	10,700	9,100	7,700
Aberdeenshire	125,300	7,800	7,200	7,900	7,800	7,000	6,500	7,200	8,600
Angus	56,200	3,000	3,100	3,500	3,500	3,100	3,000	2,900	3,300
Argyll & Bute	43,100	2,100	2,200	2,600	2,700	2,500	2,200	1,900	2,300
Clackmannanshire	25,100	1,500	1,400	1,500	1,600	1,500	1,500	1,500	1,700
Dumfries & Galloway	73,400	3,900	3,800	4,200	4,500	3,900	3,600	3,200	3,900
Dundee City	70,700	4,000	3,500	3,800	5,200	7,400	5,800	4,300	3,900
East Ayrshire	59,400	3,500	3,200	3,600	3,900	3,800	3,400	3,200	3,800
East Dunbartonshire	50,600	2,600	2,900	3,300	3,700	3,200	2,200	2,100	2,700
East Lothian	47,900	3,000	2,900	3,000	3,200	2,600	2,300	2,300	3,100
East Renfrewshire	43,200	2,600	2,800	3,200	3,200	2,600	1,800	1,900	2,400
Edinburgh, City of	232,400	13,200	10,700	10,900	14,300	22,900	22,100	19,500	17,500
Eilean Siar	13,700	700	700	800	800	700	600	700	800
Falkirk	76,100	4,700	4,300	4,600	4,900	4,400	4,500	4,800	5,500
Fife	176,900	10,700	9,800	10,300	11,400	11,600	10,300	10,100	11,200
Glasgow City	286,100	16,700	13,800	15,000	19,600	27,200	27,300	23,300	20,200
Highland	113,500	6,500	6,300	7,000	6,900	6,000	6,300	6,200	6,600
Inverclyde	39,000	2,200	2,100	2,300	2,600	2,600	2,400	2,000	2,300
Midlothian	40,100	2,500	2,400	2,500	2,700	2,400	2,100	2,200	2,600
Moray	45,900	2,700	2,500	2,900	3,100	2,700	2,700	2,600	2,700
North Ayrshire	65,800	3,800	3,700	4,100	4,500	3,900	3,500	3,400	3,900
North Lanarkshire	163,400	10,500	10,000	10,500	11,100	10,500	10,600	10,500	11,300
Orkney Islands	10,600	600	500	600	600	600	500	500	600
Perth & Kinross	71,500	3,700	3,700	4,400	4,500	3,900	4,000	3,800	4,000
Renfrewshire	84,100	4,900	4,600	5,100	5,500	5,700	5,400	4,900	5,100
Scottish Borders	55,200	2,900	3,000	3,200	3,200	2,600	2,400	2,500	3,200
Shetland Islands	11,800	700	700	700	800	700	700	700	800
South Ayrshire	53,700	2,800	2,700	3,200	3,200	3,100	2,700	2,600	3,000
South Lanarkshire	150,900	8,800	8,300	9,200	9,800	8,900	8,700	8,900	10,100
Stirling	43,200	2,300	2,500	2,800	3,200	3,400	2,300	2,100	2,500
West Dunbartonshire	43,200	2,700	2,400	2,500	3,000	2,900	2,800	2,400	2,600
West Lothian	85,500	5,900	5,400	5,400	5,700	5,200	5,200	5,400	6,200

Footnotes

- 1) For the 2011 Census, a usual resident of the UK is anyone who, on census day 2011, was in the UK and had stayed or intended to stay in the UK for a period of 12 months or more, or had a permanent UK address and was outside the UK and intended to be outside the UK for less than 12 months.
- 2) The age of a person is derived from their date of birth. It is their age in years on their last birthday up to and including census day 2011. Dates of birth that imply an age over 115 are treated as invalid and the person's age is imputed.
- 3) Council area boundaries as at 1 April 2011.
- 4) Figures in this table may not add exactly because they have been rounded to the nearest hundred.

Table A2: Census Day usually resident male population by five-year age group and council area, 2011

Council area	Males 40 to 44	Males 45 to 49	Males 50 to 54	Males 55 to 59	Males 60 to 64	Males 65 to 69	Males 70 to 74	Males 75 to 79	Males 80 and over
SCOTLAND	191,400	200,300	184,200	162,200	164,700	124,700	100,700	76,800	81,600
Aberdeen City	7,500	7,600	7,200	6,600	6,300	4,100	3,400	2,800	3,100
Aberdeenshire	9,700	10,100	9,400	8,600	8,900	6,200	4,800	3,600	3,900
Angus	4,000	4,600	4,000	3,800	4,300	3,200	2,600	2,000	2,200
Argyll & Bute	3,000	3,400	3,200	3,100	3,500	2,900	2,300	1,600	1,800
Clackmannanshire	2,100	2,100	1,800	1,600	1,700	1,300	1,000	700	700
Dumfries & Galloway	5,000	5,800	5,500	5,200	5,800	4,700	4,000	3,100	3,200
Dundee City	4,600	4,900	4,800	3,900	4,100	3,000	2,700	2,200	2,500
East Ayrshire	4,600	4,700	4,400	3,800	4,100	3,100	2,500	1,900	1,800
East Dunbartonshire	3,600	4,200	4,000	3,500	3,500	2,700	2,400	1,900	2,000
East Lothian	3,800	4,100	3,700	3,100	3,100	2,500	2,000	1,500	1,700
East Renfrewshire	3,200	3,600	3,500	2,900	2,700	2,000	1,800	1,400	1,600
Edinburgh, City of	16,600	16,500	14,700	12,800	12,200	8,500	7,100	5,800	7,100
Eilean Siar	1,000	1,100	1,000	1,000	1,100	900	700	500	500
Falkirk	6,300	6,100	5,500	4,600	4,900	3,600	3,000	2,200	2,300
Fife	13,500	13,600	13,000	11,200	12,200	9,400	7,200	5,500	6,000
Glasgow City	21,200	20,800	18,400	15,500	14,000	10,500	8,600	6,800	7,100
Highland	8,100	9,000	8,700	8,200	8,500	6,600	4,900	3,700	4,000
Inverclyde	2,800	3,400	3,000	2,600	2,600	2,000	1,600	1,200	1,200
Midlothian	3,000	3,100	2,900	2,700	2,800	2,100	1,600	1,200	1,200
Moray	3,500	3,600	3,300	3,000	3,100	2,400	2,100	1,500	1,600
North Ayrshire	4,800	5,100	4,800	4,400	4,800	3,800	3,000	2,200	2,200
North Lanarkshire	13,000	13,100	11,400	9,800	9,800	7,300	5,900	4,200	4,000
Orkney Islands	800	900	800	800	800	700	500	300	400
Perth & Kinross	5,100	5,800	5,200	4,900	5,200	4,000	3,300	2,700	3,000
Renfrewshire	6,400	7,000	6,500	5,300	5,300	4,100	3,400	2,500	2,600
Scottish Borders	4,200	4,600	4,300	4,000	4,400	3,400	2,800	2,000	2,400
Shetland Islands	800	900	800	800	800	600	500	300	400
South Ayrshire	3,700	4,200	4,100	3,800	4,100	3,400	2,700	2,100	2,200
South Lanarkshire	12,000	12,300	11,600	10,200	9,600	7,500	6,000	4,400	4,500
Stirling	3,200	3,400	3,100	2,600	2,900	2,200	1,800	1,400	1,400
West Dunbartonshire	3,200	3,600	3,300	2,900	2,700	2,100	1,600	1,300	1,200
West Lothian	7,200	7,100	6,100	5,000	5,000	3,800	3,000	2,000	1,800

Footnotes

- 1) For the 2011 Census, a usual resident of the UK is anyone who, on census day 2011, was in the UK and had stayed or intended to stay in the UK for a period of 12 months or more, or had a permanent UK address and was outside the UK and intended to be outside the UK for less than 12 months.
- 2) The age of a person is derived from their date of birth. It is their age in years on their last birthday up to and including census day 2011. Dates of birth that imply an age over 115 are treated as invalid and the person's age is imputed.
- 3) Council area boundaries as at 1 April 2011.
- 4) Figures in this table may not add exactly because they have been rounded to the nearest hundred.

Download this as [Excel](#), [csv](#), [PDF](#)

Table A3: Census Day usually resident female population by five-year age group and council area, 2011

Council area	Females All ages	Females 0 to 4	Females 5 to 9	Females 10 to 14	Females 15 to 19	Females 20 to 24	Females 25 to 29	Females 30 to 34	Females 35 to 39
SCOTLAND	2,728,000	143,600	131,600	142,000	162,700	182,900	175,700	163,000	173,800
Aberdeen City	112,700	5,700	4,500	4,500	7,500	11,800	10,600	8,000	7,000
Aberdeenshire	127,700	7,400	6,800	7,300	7,500	6,200	6,700	7,400	8,800
Angus	59,800	3,000	3,000	3,300	3,300	2,900	3,000	3,100	3,600
Argyll & Bute	45,000	2,000	2,100	2,300	2,400	1,900	2,000	1,900	2,500
Clackmannanshire	26,300	1,500	1,300	1,500	1,600	1,400	1,500	1,500	1,700
Dumfries & Galloway	77,900	3,800	3,600	4,000	4,300	3,800	3,800	3,500	4,300
Dundee City	76,600	3,800	3,300	3,600	5,600	7,900	5,900	4,500	4,100
East Ayrshire	63,400	3,300	3,200	3,400	3,800	3,700	3,600	3,500	4,100
East Dunbartonshire	54,400	2,500	2,700	3,000	3,300	2,800	2,100	2,400	3,200
East Lothian	51,800	2,900	2,700	2,900	3,200	2,700	2,500	2,700	3,300
East Renfrewshire	47,400	2,400	2,800	3,000	2,900	2,400	1,800	2,200	2,800
Edinburgh, City of	244,200	12,900	9,800	10,200	14,200	24,900	23,200	19,100	16,600
Eilean Siar	14,000	600	700	800	800	500	600	700	800
Falkirk	79,900	4,600	4,100	4,300	4,500	4,400	4,800	4,900	5,800
Fife	188,300	10,100	9,300	9,800	11,300	12,500	10,500	10,700	11,800
Glasgow City	307,200	16,300	13,300	14,300	19,700	29,400	27,800	22,900	19,900
Highland	118,700	6,200	6,100	6,400	6,400	5,500	6,600	6,300	7,300
Inverclyde	42,500	2,000	2,000	2,200	2,500	2,400	2,400	2,200	2,600
Midlothian	43,100	2,400	2,200	2,600	2,500	2,400	2,300	2,500	2,700
Moray	47,400	2,500	2,400	2,700	2,800	2,300	2,600	2,500	3,000
North Ayrshire	72,400	3,700	3,500	3,900	4,300	4,000	3,800	3,700	4,400
North Lanarkshire	174,400	10,100	9,500	10,100	10,300	10,500	11,200	11,000	11,900
Orkney Islands	10,800	500	500	600	700	500	500	600	600
Perth & Kinross	75,200	3,600	3,600	4,300	4,100	3,600	4,000	3,700	4,400
Renfrewshire	90,800	4,800	4,500	4,800	5,300	5,400	5,300	5,300	5,800
Scottish Borders	58,700	2,800	2,900	3,100	3,200	2,700	2,600	2,600	3,500
Shetland Islands	11,400	600	600	700	700	600	600	700	800
South Ayrshire	59,000	2,700	2,700	3,000	3,200	3,100	2,900	2,800	3,400
South Lanarkshire	163,000	8,600	8,200	8,800	9,400	8,700	9,500	9,500	10,600
Stirling	47,000	2,200	2,300	2,800	3,400	3,800	2,500	2,400	2,900
West Dunbartonshire	47,500	2,500	2,300	2,400	2,800	2,900	3,000	2,700	2,900
West Lothian	89,500	5,600	5,300	5,400	5,400	5,200	5,500	5,500	6,700

Footnotes

- 1) For the 2011 Census, a usual resident of the UK is anyone who, on census day 2011, was in the UK and had stayed or intended to stay in the UK for a period of 12 months or more, or had a permanent UK address and was outside the UK and intended to be outside the UK for less than 12 months.
- 2) The age of a person is derived from their date of birth. It is their age in years on their last birthday up to and including census day 2011. Dates of birth that imply an age over 115 are treated as invalid and the person's age is imputed.
- 3) Council area boundaries as at 1 April 2011.
- 4) Figures in this table may not add exactly because they have been rounded to the nearest hundred.

Table A3: Census Day usually resident female population by five-year age group and council area, 2011

Council area	Females 40 to 44	Females 45 to 49	Females 50 to 54	Females 55 to 59	Females 60 to 64	Females 65 to 69	Females 70 to 74	Females 75 to 79	Females 80 and over
SCOTLAND	203,300	210,600	191,700	168,700	171,800	136,500	119,900	101,300	148,900
Aberdeen City	7,300	7,800	7,100	6,200	6,200	4,400	4,300	3,800	6,000
Aberdeenshire	10,300	10,500	9,300	8,800	8,600	6,500	5,100	4,200	6,400
Angus	4,300	4,500	4,300	4,000	4,400	3,500	3,000	2,600	4,000
Argyll & Bute	3,300	3,500	3,400	3,200	3,700	3,000	2,600	2,100	3,100
Clackmannanshire	2,100	2,100	1,900	1,700	1,900	1,400	1,200	800	1,200
Dumfries & Galloway	5,600	6,200	5,700	5,500	5,900	5,100	4,200	3,600	5,300
Dundee City	4,600	5,300	5,000	4,100	4,500	3,400	3,300	3,000	4,500
East Ayrshire	5,100	5,000	4,500	4,100	4,200	3,400	2,900	2,400	3,300
East Dunbartonshire	4,200	4,600	4,400	3,800	3,800	3,100	2,800	2,400	3,200
East Lothian	4,200	4,200	3,900	3,200	3,300	2,700	2,300	2,000	3,000
East Renfrewshire	3,800	4,100	3,600	3,100	3,000	2,400	2,100	2,000	3,000
Edinburgh, City of	16,200	16,400	15,200	12,700	12,900	9,600	8,900	7,900	13,600
Eilean Siar	1,000	1,000	1,000	1,000	1,100	800	800	700	1,100
Falkirk	6,400	6,300	5,500	4,900	5,100	3,900	3,500	2,800	3,900
Fife	14,000	14,500	13,200	11,800	12,800	10,100	8,400	6,900	10,500
Glasgow City	21,900	22,700	19,900	15,700	14,300	11,600	11,600	10,500	15,300
Highland	8,800	9,500	8,800	8,400	8,500	6,700	5,700	4,600	6,800
Inverclyde	3,300	3,500	3,300	2,700	2,800	2,300	2,000	1,800	2,600
Midlothian	3,400	3,400	3,200	2,800	3,000	2,300	1,900	1,600	2,100
Moray	3,500	3,700	3,300	3,100	3,300	2,700	2,200	2,000	2,700
North Ayrshire	5,400	5,700	5,200	4,900	5,100	4,200	3,600	2,900	4,100
North Lanarkshire	13,800	13,800	12,200	10,600	10,400	8,400	7,400	5,900	7,400
Orkney Islands	800	800	800	800	800	700	600	400	600
Perth & Kinross	5,600	5,900	5,400	5,100	5,400	4,400	3,800	3,100	5,100
Renfrewshire	7,300	7,400	6,700	5,600	5,700	4,600	4,100	3,500	4,800
Scottish Borders	4,500	4,600	4,400	4,000	4,500	3,600	3,100	2,500	3,900
Shetland Islands	800	900	800	800	700	600	500	400	600
South Ayrshire	4,200	4,600	4,400	4,100	4,300	3,700	3,200	2,700	4,100
South Lanarkshire	12,700	13,200	12,300	10,800	10,200	8,400	7,400	6,200	8,600
Stirling	3,500	3,700	3,200	2,800	2,900	2,500	2,100	1,700	2,500
West Dunbartonshire	3,700	3,800	3,600	3,100	3,000	2,300	2,100	1,800	2,600
West Lothian	7,600	7,400	6,200	5,300	5,300	4,200	3,400	2,600	3,100

Footnotes

- 1) For the 2011 Census, a usual resident of the UK is anyone who, on census day 2011, was in the UK and had stayed or intended to stay in the UK for a period of 12 months or more, or had a permanent UK address and was outside the UK and intended to be outside the UK for less than 12 months.
- 2) The age of a person is derived from their date of birth. It is their age in years on their last birthday up to and including census day 2011. Dates of birth that imply an age over 115 are treated as invalid and the person's age is imputed.
- 3) Council area boundaries as at 1 April 2011.
- 4) Figures in this table may not add exactly because they have been rounded to the nearest hundred.

Download this as [Excel](#), [csv](#), [PDF](#)

Table A4: Census day usually resident population by council area, 2001 and 2011

Council area	2001 ¹	2011 ¹	% change 2001 to 2011 ²
SCOTLAND	5,062,000	5,295,400	4.6
Aberdeen City	212,100	222,800	5.0
Aberdeenshire	226,900	253,000	11.5
Angus	108,400	116,000	7.0
Argyll & Bute	91,300	88,200	-3.4
Clackmannanshire	48,100	51,400	7.0
Dumfries & Galloway	147,800	151,300	2.4
Dundee City	145,700	147,300	1.1
East Ayrshire	120,200	122,700	2.1
East Dunbartonshire	108,200	105,000	-3.0
East Lothian	90,100	99,700	10.7
East Renfrewshire	89,300	90,600	1.4
Edinburgh, City of	448,600	476,600	6.2
Eilean Siar	26,500	27,700	4.5
Falkirk	145,200	156,000	7.4
Fife	349,400	365,200	4.5
Glasgow City	577,900	593,200	2.7
Highland	208,900	232,100	11.1
Inverclyde	84,200	81,500	-3.2
Midlothian	80,900	83,200	2.8
Moray	86,900	93,300	7.3
North Ayrshire	135,800	138,200	1.7
North Lanarkshire	321,100	337,800	5.2
Orkney Islands	19,200	21,400	10.9
Perth & Kinross	134,900	146,700	8.7
Renfrewshire	172,900	174,900	1.2
Scottish Borders	106,800	113,900	6.7
Shetland Islands	22,000	23,200	5.3
South Ayrshire	112,100	112,800	0.6
South Lanarkshire	302,200	313,800	3.8
Stirling	86,200	90,200	4.7
West Dunbartonshire	93,400	90,700	-2.8
West Lothian	158,700	175,100	10.3

Footnotes¹ Population data are rounded to the nearest hundred.² Percentages are calculated from unrounded data.Download this as [Excel](#), [csv](#), [PDF](#)

Table A5: Census day usually resident population aged under 15 by council area, 2001 and 2011

Council area	2001 Population ¹	% of total 2001 council area population ²	2011 Population ¹	% of total 2011 council area population ²	% change 2001 to 2011 ²
SCOTLAND	906,900	17.9	854,100	16.1	-5.8
Aberdeen City	32,400	15.3	30,100	13.5	-7.2
Aberdeenshire	44,500	19.6	44,300	17.5	-0.3
Angus	19,000	17.5	18,900	16.3	-0.5
Argyll & Bute	16,000	17.5	13,300	15.1	-16.6
Clackmannanshire	9,300	19.4	8,700	16.9	-6.7
Dumfries & Galloway	26,000	17.6	23,300	15.4	-10.4
Dundee City	24,000	16.5	22,000	15.0	-8.0
East Ayrshire	22,300	18.6	20,100	16.4	-9.9
East Dunbartonshire	20,500	19.0	17,200	16.4	-16.3
East Lothian	17,700	19.6	17,400	17.4	-1.7
East Renfrewshire	17,900	20.1	16,700	18.4	-6.9
Edinburgh, City of	68,500	15.3	67,700	14.2	-1.2
Eilean Siar	4,600	17.5	4,300	15.5	-7.2
Falkirk	26,600	18.3	26,600	17.1	0.1
Fife	64,000	18.3	60,100	16.5	-6.0
Glasgow City	99,300	17.2	89,300	15.1	-10.0
Highland	38,200	18.3	38,500	16.6	0.9
Inverclyde	15,200	18.0	12,700	15.6	-16.1
Midlothian	15,900	19.6	14,600	17.6	-8.1
Moray	16,300	18.8	15,800	16.9	-3.5
North Ayrshire	25,300	18.7	22,700	16.4	-10.5
North Lanarkshire	61,200	19.1	60,600	17.9	-1.0
Orkney Islands	3,600	18.6	3,300	15.5	-7.1
Perth & Kinross	23,900	17.7	23,300	15.9	-2.3
Renfrewshire	31,300	18.1	28,600	16.4	-8.6
Scottish Borders	18,800	17.6	18,000	15.8	-4.7
Shetland Islands	4,500	20.5	4,200	18.0	-7.5
South Ayrshire	18,900	16.9	17,100	15.2	-9.5
South Lanarkshire	55,700	18.4	51,800	16.5	-6.9
Stirling	15,500	18.0	14,800	16.4	-4.5
West Dunbartonshire	17,300	18.5	14,900	16.4	-13.9
West Lothian	32,700	20.6	33,100	18.9	1.3

Footnotes¹ Population data are rounded to the nearest hundred.² Percentages are calculated from unrounded data.Download this as [Excel](#), [csv](#), [PDF](#)

Table A6: Census day usually resident population aged under 5 by council area, 2001 and 2011

Council area	2001 Population ¹	% of total 2001 council area population ²	2011 Population ¹	% of total 2011 council area population ²	% change 2001 to 2011 ²
SCOTLAND	276,900	5.5	292,800	5.5	5.8
Aberdeen City	10,300	4.8	11,500	5.2	12.0
Aberdeenshire	13,000	5.7	15,100	6.0	16.5
Angus	5,700	5.3	6,000	5.1	4.5
Argyll & Bute	4,600	5.0	4,100	4.7	-11.0
Clackmannanshire	2,700	5.7	2,900	5.7	7.5
Dumfries & Galloway	7,500	5.1	7,700	5.1	2.5
Dundee City	7,300	5.0	7,800	5.3	6.5
East Ayrshire	6,400	5.3	6,800	5.5	5.7
East Dunbartonshire	5,800	5.3	5,200	4.9	-10.6
East Lothian	5,500	6.1	5,900	5.9	7.7
East Renfrewshire	5,400	6.0	5,000	5.5	-7.5
Edinburgh, City of	22,200	4.9	26,200	5.5	18.0
Eilean Siar	1,300	4.9	1,400	4.9	4.7
Falkirk	8,300	5.7	9,300	6.0	12.4
Fife	19,200	5.5	20,800	5.7	8.1
Glasgow City	31,600	5.5	33,000	5.6	4.4
Highland	11,400	5.4	12,700	5.5	11.7
Inverclyde	4,500	5.3	4,200	5.2	-6.0
Midlothian	5,000	6.2	4,900	5.9	-2.4
Moray	4,900	5.7	5,300	5.6	6.7
North Ayrshire	7,300	5.4	7,400	5.4	1.5
North Lanarkshire	19,400	6.0	20,600	6.1	6.2
Orkney Islands	1,000	5.1	1,100	5.2	12.9
Perth & Kinross	7,200	5.3	7,300	5.0	1.6
Renfrewshire	9,600	5.6	9,600	5.5	0.0
Scottish Borders	5,500	5.2	5,700	5.0	3.9
Shetland Islands	1,300	6.0	1,400	6.0	4.4
South Ayrshire	5,500	4.9	5,500	4.9	0.6
South Lanarkshire	17,000	5.6	17,400	5.5	2.2
Stirling	4,800	5.6	4,400	4.9	-8.6
West Dunbartonshire	5,200	5.6	5,200	5.8	0.8
West Lothian	10,500	6.6	11,600	6.6	9.6

Footnotes¹ Population data are rounded to the nearest hundred.² Percentages are calculated from unrounded data.Download this as [Excel](#), [csv](#), [PDF](#)

Table A7: Census day usually resident population aged 5 to 14 by council area, 2001 and 2011

Council area	2001 Population ¹	% of total 2001 council area population ²	2011 Population ¹	% of total 2011 council area population ²	% change 2001 to 2011 ²
SCOTLAND	630,000	12.4	561,300	10.6	-10.9
Aberdeen City	22,100	10.4	18,600	8.3	-16.1
Aberdeenshire	31,500	13.9	29,200	11.5	-7.3
Angus	13,300	12.2	12,900	11.1	-2.6
Argyll & Bute	11,400	12.5	9,200	10.5	-18.9
Clackmannanshire	6,600	13.7	5,800	11.2	-12.6
Dumfries & Galloway	18,500	12.5	15,600	10.3	-15.6
Dundee City	16,600	11.4	14,200	9.7	-14.4
East Ayrshire	15,900	13.2	13,300	10.9	-16.2
East Dunbartonshire	14,800	13.7	12,100	11.5	-18.5
East Lothian	12,200	13.5	11,400	11.5	-6.0
East Renfrewshire	12,600	14.1	11,700	12.9	-6.7
Edinburgh, City of	46,400	10.3	41,600	8.7	-10.4
Eilean Siar	3,300	12.6	2,900	10.6	-11.8
Falkirk	18,300	12.6	17,300	11.1	-5.5
Fife	44,700	12.8	39,300	10.8	-12.1
Glasgow City	67,700	11.7	56,400	9.5	-16.7
Highland	26,900	12.9	25,800	11.1	-3.8
Inverclyde	10,700	12.7	8,500	10.4	-20.3
Midlothian	10,900	13.5	9,700	11.7	-10.7
Moray	11,400	13.1	10,500	11.3	-7.8
North Ayrshire	18,000	13.3	15,300	11.0	-15.4
North Lanarkshire	41,900	13.0	40,000	11.9	-4.3
Orkney Islands	2,600	13.4	2,200	10.3	-14.7
Perth & Kinross	16,700	12.3	16,000	10.9	-4.0
Renfrewshire	21,700	12.5	19,000	10.8	-12.4
Scottish Borders	13,300	12.5	12,200	10.7	-8.3
Shetland Islands	3,200	14.4	2,800	12.0	-12.6
South Ayrshire	13,400	12.0	11,600	10.3	-13.6
South Lanarkshire	38,700	12.8	34,400	11.0	-10.9
Stirling	10,700	12.4	10,400	11.5	-2.6
West Dunbartonshire	12,100	13.0	9,700	10.6	-20.3
West Lothian	22,200	14.0	21,600	12.3	-2.7

Footnotes¹ Population data are rounded to the nearest hundred.² Percentages are calculated from unrounded data.Download this as [Excel](#), [csv](#), [PDF](#)

Table A8: Census day usually resident population aged 15 to 64 by council area, 2001 and 2011

Council area	2001 Population ¹	% of total 2001 council area population ²	2011 Population ¹	% of total 2011 council area population ²	% change 2001 to 2011 ²
SCOTLAND	3,350,200	66.2	3,551,000	67.1	6.0
Aberdeen City	147,300	69.4	160,700	72.1	9.1
Aberdeenshire	150,100	66.2	168,000	66.4	11.9
Angus	69,900	64.4	74,000	63.8	6.0
Argyll & Bute	58,500	64.1	55,500	62.9	-5.2
Clackmannanshire	31,800	66.2	34,500	67.1	8.5
Dumfries & Galloway	93,400	63.2	95,000	62.8	1.7
Dundee City	95,900	65.9	100,600	68.3	4.9
East Ayrshire	78,600	65.4	81,300	66.3	3.5
East Dunbartonshire	70,900	65.5	67,400	64.2	-5.0
East Lothian	56,900	63.1	64,600	64.8	13.6
East Renfrewshire	57,400	64.2	57,600	63.6	0.4
Edinburgh, City of	311,000	69.3	340,400	71.4	9.5
Eilean Siar	16,600	62.7	17,400	62.9	4.7
Falkirk	96,200	66.3	104,100	66.7	8.2
Fife	228,700	65.5	241,000	66.0	5.4
Glasgow City	387,900	67.1	421,700	71.1	8.7
Highland	136,000	65.1	150,600	64.9	10.7
Inverclyde	55,100	65.4	54,000	66.3	-1.9
Midlothian	52,900	65.4	54,700	65.7	3.3
Moray	56,400	64.9	60,300	64.6	6.8
North Ayrshire	88,600	65.3	89,600	64.8	1.1
North Lanarkshire	215,400	67.1	226,800	67.1	5.3
Orkney Islands	12,500	64.7	13,800	64.7	10.9
Perth & Kinross	86,100	63.8	93,800	63.9	9.0
Renfrewshire	115,100	66.6	116,800	66.8	1.5
Scottish Borders	67,800	63.5	72,100	63.3	6.4
Shetland Islands	14,400	65.5	15,200	65.7	5.7
South Ayrshire	71,800	64.0	71,400	63.3	-0.5
South Lanarkshire	200,700	66.4	209,100	66.6	4.2
Stirling	57,300	66.5	59,900	66.4	4.5
West Dunbartonshire	61,300	65.7	60,900	67.2	-0.6
West Lothian	107,800	67.9	118,100	67.5	9.6

Footnotes¹ Population data are rounded to the nearest hundred.² Percentages are calculated from unrounded data.Download this as [Excel](#), [csv](#), [PDF](#)

Table A9: Census day usually resident population aged 15 to 39 by council area, 2001 and 2011

Council area	2001 Population ¹	% of total 2001 council area population ²	2011 Population ¹	% of total 2011 council area population ²	% change 2001 to 2011 ²
SCOTLAND	1,734,000	34.3	1,702,100	32.1	-1.8
Aberdeen City	83,900	39.5	90,900	40.8	8.4
Aberdeenshire	71,900	31.7	73,600	29.1	2.4
Angus	33,100	30.5	31,800	27.4	-3.8
Argyll & Bute	27,200	29.8	22,400	25.4	-17.8
Clackmannanshire	15,900	33.0	15,500	30.2	-2.3
Dumfries & Galloway	42,700	28.9	38,700	25.6	-9.3
Dundee City	52,400	36.0	54,800	37.2	4.5
East Ayrshire	39,400	32.7	36,700	29.9	-6.7
East Dunbartonshire	33,600	31.0	27,600	26.3	-17.8
East Lothian	27,200	30.2	28,000	28.1	2.9
East Renfrewshire	27,300	30.5	24,000	26.5	-12.0
Edinburgh, City of	181,500	40.5	194,300	40.8	7.1
Eilean Siar	7,600	28.6	7,100	25.6	-6.6
Falkirk	49,300	34.0	48,500	31.1	-1.7
Fife	115,600	33.1	111,400	30.5	-3.6
Glasgow City	225,000	38.9	237,200	40.0	5.4
Highland	63,600	30.4	64,100	27.6	0.8
Inverclyde	27,800	33.0	24,000	29.4	-13.6
Midlothian	25,900	32.0	24,400	29.3	-5.9
Moray	28,900	33.2	27,100	29.0	-6.3
North Ayrshire	43,800	32.2	39,300	28.5	-10.1
North Lanarkshire	114,500	35.7	108,900	32.2	-4.9
Orkney Islands	5,700	29.9	5,800	27.0	0.3
Perth & Kinross	40,400	29.9	40,200	27.4	-0.4
Renfrewshire	58,500	33.8	53,500	30.6	-8.4
Scottish Borders	31,100	29.2	28,500	25.1	-8.4
Shetland Islands	7,100	32.5	6,900	29.9	-3.0
South Ayrshire	33,500	29.9	29,900	26.5	-10.6
South Lanarkshire	101,400	33.6	94,200	30.0	-7.2
Stirling	29,300	34.0	28,500	31.6	-2.5
West Dunbartonshire	31,800	34.1	28,100	30.9	-11.7
West Lothian	57,100	35.9	56,000	32.0	-1.9

Footnotes¹ Population data are rounded to the nearest hundred.² Percentages are calculated from unrounded data.Download this as [Excel](#), [csv](#), [PDF](#)

Table A10: Census day usually resident population aged 40 to 64 by council area, 2001 and 2011

Council area	2001 Population ¹	% of total 2001 council area population ²	2011 Population ¹	% of total 2011 council area population ²	% change 2001 to 2011 ²
SCOTLAND	1,616,200	31.9	1,848,900	34.9	14.4
Aberdeen City	63,400	29.9	69,800	31.3	10.1
Aberdeenshire	78,200	34.4	94,400	37.3	20.8
Angus	36,800	34.0	42,200	36.4	14.8
Argyll & Bute	31,300	34.3	33,100	37.6	5.8
Clackmannanshire	15,900	33.2	19,000	37.0	19.3
Dumfries & Galloway	50,700	34.3	56,300	37.2	10.9
Dundee City	43,500	29.9	45,800	31.1	5.4
East Ayrshire	39,200	32.6	44,600	36.3	13.8
East Dunbartonshire	37,300	34.5	39,800	37.9	6.5
East Lothian	29,600	32.9	36,600	36.7	23.4
East Renfrewshire	30,100	33.7	33,600	37.1	11.6
Edinburgh, City of	129,500	28.9	146,100	30.7	12.8
Eilean Siar	9,000	34.1	10,300	37.3	14.3
Falkirk	46,900	32.3	55,600	35.7	18.6
Fife	113,100	32.4	129,600	35.5	14.6
Glasgow City	162,900	28.2	184,500	31.1	13.3
Highland	72,400	34.7	86,400	37.2	19.4
Inverclyde	27,300	32.4	30,000	36.9	10.0
Midlothian	27,000	33.4	30,300	36.4	12.1
Moray	27,600	31.7	33,200	35.6	20.7
North Ayrshire	44,900	33.0	50,300	36.4	12.0
North Lanarkshire	100,900	31.4	117,900	34.9	16.9
Orkney Islands	6,700	34.8	8,000	37.7	20.0
Perth & Kinross	45,700	33.8	53,600	36.5	17.3
Renfrewshire	56,600	32.7	63,300	36.2	11.7
Scottish Borders	36,600	34.3	43,600	38.3	18.9
Shetland Islands	7,300	33.0	8,300	35.8	14.3
South Ayrshire	38,300	34.1	41,500	36.8	8.4
South Lanarkshire	99,200	32.8	114,900	36.6	15.8
Stirling	28,000	32.5	31,400	34.7	11.8
West Dunbartonshire	29,500	31.6	32,900	36.2	11.3
West Lothian	50,700	32.0	62,100	35.5	22.4

Footnotes¹ Population data are rounded to the nearest hundred.² Percentages are calculated from unrounded data.Download this as [Excel](#), [csv](#), [PDF](#)

Table A11: Census day usually resident population aged 65 and over by council area, 2001 and 2011

Council area	2001 Population ¹	% of total 2001 council area population ²	2011 Population ¹	% of total 2011 council area population ²	% change 2001 to 2011 ²
SCOTLAND	804,900	15.9	890,300	16.8	10.6
Aberdeen City	32,400	15.3	32,000	14.4	-1.2
Aberdeenshire	32,300	14.3	40,700	16.1	25.7
Angus	19,600	18.1	23,100	19.9	17.8
Argyll & Bute	16,800	18.4	19,300	21.9	15.0
Clackmannanshire	6,900	14.4	8,200	16.0	18.5
Dumfries & Galloway	28,300	19.2	33,100	21.8	16.7
Dundee City	25,800	17.7	24,600	16.7	-4.5
East Ayrshire	19,300	16.1	21,300	17.3	10.1
East Dunbartonshire	16,800	15.5	20,400	19.4	21.8
East Lothian	15,600	17.3	17,800	17.8	14.1
East Renfrewshire	14,000	15.7	16,300	18.0	16.3
Edinburgh, City of	69,100	15.4	68,500	14.4	-0.9
Eilean Siar	5,200	19.8	6,000	21.6	13.8
Falkirk	22,400	15.4	25,300	16.2	13.0
Fife	56,700	16.2	64,100	17.5	12.9
Glasgow City	90,700	15.7	82,200	13.9	-9.4
Highland	34,700	16.6	43,000	18.5	24.1
Inverclyde	14,000	16.6	14,800	18.1	5.6
Midlothian	12,100	15.0	13,900	16.7	14.6
Moray	14,200	16.3	17,200	18.5	21.7
North Ayrshire	21,900	16.1	25,900	18.7	18.5
North Lanarkshire	44,500	13.9	50,400	14.9	13.3
Orkney Islands	3,200	16.7	4,200	19.8	31.1
Perth & Kinross	25,000	18.5	29,600	20.2	18.1
Renfrewshire	26,500	15.3	29,500	16.9	11.2
Scottish Borders	20,100	18.9	23,800	20.9	18.2
Shetland Islands	3,100	14.0	3,800	16.3	22.4
South Ayrshire	21,400	19.1	24,300	21.5	13.2
South Lanarkshire	45,900	15.2	53,000	16.9	15.5
Stirling	13,400	15.5	15,500	17.2	16.0
West Dunbartonshire	14,700	15.8	14,900	16.4	1.1
West Lothian	18,200	11.5	23,900	13.6	30.9

Footnotes¹ Population data are rounded to the nearest hundred.² Percentages are calculated from unrounded data.Download this as [Excel](#), [csv](#), [PDF](#)

Table A12: Census day usually resident population aged 65 to 79 by council area, 2001 and 2011

Council area	2001 Population ¹	% of total 2001 council area population ²	2011 Population ¹	% of total 2011 council area population ²	% change 2001 to 2011 ²
SCOTLAND	611,600	12.1	659,900	12.5	7.9
Aberdeen City	24,400	11.5	22,900	10.3	-6.1
Aberdeenshire	24,400	10.8	30,400	12.0	24.4
Angus	14,600	13.4	16,900	14.5	15.7
Argyll & Bute	12,500	13.7	14,400	16.4	15.6
Clackmannanshire	5,300	11.0	6,400	12.4	20.2
Dumfries & Galloway	21,700	14.7	24,600	16.3	13.7
Dundee City	19,600	13.5	17,600	11.9	-10.3
East Ayrshire	14,800	12.3	16,200	13.2	9.4
East Dunbartonshire	13,200	12.2	15,200	14.5	15.7
East Lothian	11,600	12.9	13,000	13.1	12.2
East Renfrewshire	10,600	11.9	11,700	13.0	10.3
Edinburgh, City of	50,900	11.3	47,900	10.0	-5.9
Eilean Siar	3,800	14.5	4,300	15.7	13.4
Falkirk	17,200	11.9	19,100	12.3	10.9
Fife	42,700	12.2	47,600	13.0	11.4
Glasgow City	68,800	11.9	59,800	10.1	-13.2
Highland	26,500	12.7	32,200	13.9	21.8
Inverclyde	10,600	12.6	10,900	13.4	2.8
Midlothian	9,400	11.6	10,600	12.8	12.8
Moray	10,800	12.4	12,900	13.8	19.4
North Ayrshire	16,700	12.3	19,700	14.2	18.1
North Lanarkshire	35,300	11.0	39,000	11.6	10.7
Orkney Islands	2,400	12.3	3,200	14.9	33.7
Perth & Kinross	18,800	13.9	21,400	14.6	14.3
Renfrewshire	20,500	11.9	22,100	12.6	7.8
Scottish Borders	14,900	14.0	17,500	15.4	17.5
Shetland Islands	2,300	10.4	2,800	12.2	24.3
South Ayrshire	16,100	14.3	17,900	15.9	11.5
South Lanarkshire	35,700	11.8	39,900	12.7	11.5
Stirling	10,100	11.7	11,600	12.9	15.8
West Dunbartonshire	11,200	12.0	11,100	12.2	-1.3
West Lothian	14,300	9.0	18,900	10.8	32.5

Footnotes¹ Population data are rounded to the nearest hundred.² Percentages are calculated from unrounded data.Download this as [Excel](#), [csv](#), [PDF](#)

Table A13: Census day usually resident population aged 80 and over by council area, 2001 and 2011

Council area	2001 Population ¹	% of total 2001 council area population ²	2011 Population ¹	% of total 2011 council area population ²	% change 2001 to 2011 ²
SCOTLAND	193,300	3.8	230,400	4.4	19.2
Aberdeen City	8,000	3.8	9,100	4.1	13.6
Aberdeenshire	7,900	3.5	10,300	4.1	30.0
Angus	5,000	4.6	6,200	5.3	24.0
Argyll & Bute	4,300	4.7	4,900	5.6	13.4
Clackmannanshire	1,600	3.4	1,800	3.6	12.7
Dumfries & Galloway	6,700	4.5	8,400	5.6	26.4
Dundee City	6,100	4.2	7,000	4.8	14.1
East Ayrshire	4,500	3.8	5,100	4.2	12.4
East Dunbartonshire	3,600	3.3	5,200	4.9	44.4
East Lothian	3,900	4.4	4,700	4.7	19.9
East Renfrewshire	3,400	3.8	4,600	5.0	35.3
Edinburgh, City of	18,200	4.1	20,600	4.3	13.1
Eilean Siar	1,400	5.3	1,600	5.9	14.9
Falkirk	5,200	3.5	6,200	4.0	20.0
Fife	14,000	4.0	16,500	4.5	17.6
Glasgow City	21,900	3.8	22,400	3.8	2.5
Highland	8,200	3.9	10,800	4.7	31.7
Inverclyde	3,400	4.0	3,800	4.7	14.4
Midlothian	2,700	3.4	3,300	4.0	20.8
Moray	3,400	3.9	4,300	4.6	28.9
North Ayrshire	5,200	3.8	6,200	4.5	19.7
North Lanarkshire	9,200	2.9	11,400	3.4	23.2
Orkney Islands	800	4.4	1,000	4.9	23.9
Perth & Kinross	6,300	4.7	8,100	5.5	29.6
Renfrewshire	6,000	3.5	7,400	4.2	22.7
Scottish Borders	5,200	4.9	6,300	5.5	20.2
Shetland Islands	800	3.7	900	4.1	17.3
South Ayrshire	5,400	4.8	6,400	5.7	18.6
South Lanarkshire	10,100	3.4	13,100	4.2	29.3
Stirling	3,300	3.9	3,900	4.3	16.4
West Dunbartonshire	3,500	3.7	3,800	4.2	8.8
West Lothian	3,900	2.5	4,900	2.8	25.3

Footnotes¹ Population data are rounded to the nearest hundred.² Percentages are calculated from unrounded data.Download this as [Excel](#), [csv](#), [PDF](#)

Table A14: Census day usually resident population by sex and council area, 2011

Council area	Population ¹			Per cent ²	
	Persons	Males	Females	Males	Females
SCOTLAND	5,295,400	2,567,400	2,728,000	48.5	51.5
Aberdeen City	222,800	110,100	112,700	49.4	50.6
Aberdeenshire	253,000	125,300	127,700	49.5	50.5
Angus	116,000	56,200	59,800	48.5	51.5
Argyll & Bute	88,200	43,100	45,000	48.9	51.1
Clackmannanshire	51,400	25,100	26,300	48.8	51.2
Dumfries & Galloway	151,300	73,400	77,900	48.5	51.5
Dundee City	147,300	70,700	76,600	48.0	52.0
East Ayrshire	122,700	59,400	63,400	48.4	51.6
East Dunbartonshire	105,000	50,600	54,400	48.2	51.8
East Lothian	99,700	47,900	51,800	48.0	52.0
East Renfrewshire	90,600	43,200	47,400	47.7	52.3
Edinburgh, City of	476,600	232,400	244,200	48.8	51.2
Eilean Siar	27,700	13,700	14,000	49.4	50.6
Falkirk	156,000	76,100	79,900	48.8	51.2
Fife	365,200	176,900	188,300	48.5	51.5
Glasgow City	593,200	286,100	307,200	48.2	51.8
Highland	232,100	113,500	118,700	48.9	51.1
Inverclyde	81,500	39,000	42,500	47.8	52.2
Midlothian	83,200	40,100	43,100	48.2	51.8
Moray	93,300	45,900	47,400	49.2	50.8
North Ayrshire	138,200	65,800	72,400	47.6	52.4
North Lanarkshire	337,800	163,400	174,400	48.4	51.6
Orkney Islands	21,400	10,600	10,800	49.5	50.5
Perth & Kinross	146,700	71,500	75,200	48.7	51.3
Renfrewshire	174,900	84,100	90,800	48.1	51.9
Scottish Borders	113,900	55,200	58,700	48.4	51.6
Shetland Islands	23,200	11,800	11,400	50.8	49.2
South Ayrshire	112,800	53,700	59,000	47.6	52.4
South Lanarkshire	313,800	150,900	163,000	48.1	51.9
Stirling	90,200	43,200	47,000	47.9	52.1
West Dunbartonshire	90,700	43,200	47,500	47.6	52.4
West Lothian	175,100	85,500	89,500	48.9	51.1

Footnotes¹ Population data are rounded to the nearest hundred.² Percentages are calculated from unrounded data.Download this as [Excel](#), [csv](#), [PDF](#)

Table A15: Dependency ratios¹ by council area, 2001 and 2011

Council area	Dependency ratio ¹ aged under 15 ²		Dependency ratio ¹ aged 65 and over ²	
	2001	2011	2001	2011
SCOTLAND	27.1	24.1	24.0	25.1
Aberdeen City	22.0	18.7	22.0	19.9
Aberdeenshire	29.6	26.4	21.5	24.2
Angus	27.2	25.5	28.0	31.1
Argyll & Bute	27.3	24.0	28.7	34.8
Clackmannanshire	29.3	25.2	21.8	23.8
Dumfries & Galloway	27.8	24.5	30.3	34.8
Dundee City	25.0	21.9	26.8	24.4
East Ayrshire	28.4	24.7	24.6	26.2
East Dunbartonshire	29.0	25.5	23.6	30.3
East Lothian	31.1	26.9	27.4	27.5
East Renfrewshire	31.3	29.0	24.4	28.3
Edinburgh, City of	22.0	19.9	22.2	20.1
Eilean Siar	27.8	24.7	31.5	34.3
Falkirk	27.6	25.6	23.3	24.3
Fife	28.0	24.9	24.8	26.6
Glasgow City	25.6	21.2	23.4	19.5
Highland	28.1	25.6	25.5	28.6
Inverclyde	27.5	23.6	25.4	27.3
Midlothian	30.0	26.7	22.9	25.4
Moray	29.0	26.2	25.1	28.6
North Ayrshire	28.6	25.3	24.7	28.9
North Lanarkshire	28.4	26.7	20.6	22.2
Orkney Islands	28.7	24.0	25.9	30.6
Perth & Kinross	27.7	24.9	29.1	31.5
Renfrewshire	27.2	24.5	23.0	25.2
Scottish Borders	27.8	24.9	29.7	33.0
Shetland Islands	31.3	27.4	21.4	24.8
South Ayrshire	26.3	24.0	29.9	34.0
South Lanarkshire	27.7	24.8	22.9	25.3
Stirling	27.0	24.7	23.4	25.9
West Dunbartonshire	28.2	24.4	24.0	24.5
West Lothian	30.3	28.0	16.9	20.2

Footnotes¹ Number per 100 population aged 15 to 64.² Ratios are calculated from unrounded data.Download this as [Excel](#), [csv](#), [PDF](#)

Table A16: Households by number of usual residents in household and council area, census day 2011

Council area	Households with usual residents ¹	Households with usual residents - number ¹					Households with usual residents - % of all occupied households ²				
		1 person	2 people	3 people	4 people	5 or more people	1 person	2 people	3 people	4 people	5 or more people
SCOTLAND	2,372,780	823,340	807,630	357,510	272,310	112,000	34.7	34.0	15.1	11.5	4.7
Aberdeen City	103,370	39,220	35,940	14,620	9,790	3,800	37.9	34.8	14.1	9.5	3.7
Aberdeenshire	104,710	27,730	38,130	17,030	15,500	6,320	26.5	36.4	16.3	14.8	6.0
Angus	51,620	16,590	18,890	7,550	6,230	2,360	32.1	36.6	14.6	12.1	4.6
Argyll & Bute	40,130	14,280	14,620	5,210	4,140	1,880	35.6	36.4	13.0	10.3	4.7
Clackmannanshire	22,730	7,310	8,150	3,630	2,590	1,060	32.2	35.8	16.0	11.4	4.6
Dumfries & Galloway	67,980	22,120	25,470	9,560	7,590	3,240	32.5	37.5	14.1	11.2	4.8
Dundee City	69,190	27,960	22,420	9,780	6,310	2,730	40.4	32.4	14.1	9.1	3.9
East Ayrshire	53,920	17,130	18,740	8,890	6,640	2,520	31.8	34.7	16.5	12.3	4.7
East Dunbartonshire	43,480	12,350	14,280	7,250	6,960	2,640	28.4	32.8	16.7	16.0	6.1
East Lothian	42,910	13,140	15,190	6,740	5,740	2,100	30.6	35.4	15.7	13.4	4.9
East Renfrewshire	37,210	11,220	11,480	5,880	5,970	2,660	30.2	30.8	15.8	16.0	7.1
Edinburgh, City of	223,050	87,180	74,690	30,490	21,890	8,810	39.1	33.5	13.7	9.8	4.0
Eilean Siar	12,580	4,680	4,050	1,840	1,280	730	37.2	32.2	14.6	10.2	5.8
Falkirk	68,730	21,790	24,100	11,190	8,560	3,090	31.7	35.1	16.3	12.5	4.5
Fife	160,950	51,240	58,920	24,700	18,600	7,490	31.8	36.6	15.3	11.6	4.7
Glasgow City	285,690	123,240	86,700	39,170	24,250	12,330	43.1	30.3	13.7	8.5	4.3
Highland	102,090	32,380	37,460	15,130	11,740	5,380	31.7	36.7	14.8	11.5	5.3
Inverclyde	37,440	14,400	11,290	5,790	4,310	1,650	38.5	30.2	15.5	11.5	4.4
Midlothian	34,980	9,590	12,700	6,020	4,750	1,920	27.4	36.3	17.2	13.6	5.5
Moray	40,060	12,050	14,890	5,940	5,040	2,140	30.1	37.2	14.8	12.6	5.4
North Ayrshire	62,500	21,610	21,510	9,450	6,970	2,960	34.6	34.4	15.1	11.2	4.7
North Lanarkshire	146,000	46,830	46,660	25,220	19,330	7,960	32.1	32.0	17.3	13.2	5.5
Orkney Islands	9,730	3,350	3,530	1,300	1,080	480	34.4	36.2	13.3	11.1	4.9
Perth & Kinross	64,780	20,880	24,440	9,240	7,280	2,940	32.2	37.7	14.3	11.2	4.5
Renfrewshire	80,910	31,240	24,690	12,160	9,440	3,390	38.6	30.5	15.0	11.7	4.2
Scottish Borders	52,500	18,040	19,550	6,960	5,750	2,200	34.4	37.2	13.3	10.9	4.2
Shetland Islands	9,950	3,190	3,430	1,390	1,240	710	32.0	34.5	13.9	12.4	7.1
South Ayrshire	51,290	17,380	18,520	7,490	5,720	2,180	33.9	36.1	14.6	11.2	4.3
South Lanarkshire	139,190	46,650	46,020	22,560	17,480	6,470	33.5	33.1	16.2	12.6	4.7
Stirling	37,570	11,510	13,300	5,850	4,920	1,990	30.6	35.4	15.6	13.1	5.3
West Dunbartonshire	42,170	16,170	12,950	6,540	4,710	1,810	38.3	30.7	15.5	11.2	4.3
West Lothian	73,400	20,920	24,940	12,950	10,520	4,070	28.5	34.0	17.6	14.3	5.5

Footnotes

¹ Population data are rounded to the nearest hundred.

² Percentages are calculated from unrounded data.

Download this as [Excel](#), [csv](#), [PDF](#)

Table A17: Households, usual residents of households and average household size by council area, 2001 and 2011

Council area	2001			2011			% change in number of households 2001 to 2011 ³	% change in population living in households 2001 to 2011 ³
	Households with usual residents ¹	Usually resident population in households ²	Average household size ³	Households with usual residents ¹	Usually resident population in households ²	Average household size ³		
SCOTLAND	2,192,250	4,976,000	2.27	2,372,780	5,196,400	2.19	8.2	4.4
Aberdeen City	97,010	206,500	2.13	103,370	214,200	2.07	6.6	3.7
Aberdeenshire	90,740	224,000	2.47	104,710	250,500	2.39	15.4	11.8
Angus	46,950	106,400	2.27	51,620	114,400	2.22	9.9	7.5
Argyll & Bute	38,970	87,400	2.24	40,130	85,700	2.14	3.0	-2.0
Clackmannanshire	20,560	47,100	2.29	22,730	50,400	2.22	10.6	7.0
Dumfries & Galloway	63,810	145,800	2.28	67,980	149,400	2.20	6.5	2.5
Dundee City	66,910	142,500	2.13	69,190	142,100	2.05	3.4	-0.3
East Ayrshire	50,350	118,600	2.36	53,920	121,300	2.25	7.1	2.3
East Dunbartonshire	42,210	107,000	2.53	43,480	104,400	2.40	3.0	-2.4
East Lothian	38,160	89,000	2.33	42,910	97,800	2.28	12.4	10.0
East Renfrewshire	34,950	88,600	2.54	37,210	90,000	2.42	6.5	1.5
Edinburgh, City of	204,680	437,800	2.14	223,050	462,300	2.07	9.0	5.6
Eilean Siar	11,280	26,200	2.32	12,580	27,300	2.17	11.5	4.4
Falkirk	62,600	143,500	2.29	68,730	154,200	2.24	9.8	7.5
Fife	150,270	343,000	2.28	160,950	357,400	2.22	7.1	4.2
Glasgow City	271,600	566,000	2.08	285,690	578,200	2.02	5.2	2.2
Highland	89,530	205,400	2.29	102,090	228,400	2.24	14.0	11.2
Inverclyde	36,690	83,100	2.26	37,440	80,300	2.14	2.0	-3.4
Midlothian	32,920	80,000	2.43	34,980	82,300	2.35	6.2	2.8
Moray	35,800	84,900	2.37	40,060	91,200	2.28	11.9	7.5
North Ayrshire	58,730	134,400	2.29	62,500	136,600	2.19	6.4	1.6
North Lanarkshire	132,620	318,100	2.40	146,000	335,300	2.30	10.1	5.4
Orkney Islands	8,340	19,000	2.28	9,730	21,200	2.18	16.6	11.1
Perth & Kinross	58,320	130,900	2.24	64,780	142,200	2.19	11.1	8.6
Renfrewshire	75,360	170,700	2.27	80,910	172,700	2.13	7.4	1.2
Scottish Borders	47,370	105,400	2.22	52,500	112,600	2.14	10.8	6.8
Shetland Islands	9,110	21,700	2.38	9,950	23,000	2.31	9.2	6.0
South Ayrshire	48,750	110,400	2.27	51,290	111,300	2.17	5.2	0.7
South Lanarkshire	126,500	298,800	2.36	139,190	310,500	2.23	10.0	3.9
Stirling	35,510	83,700	2.36	37,570	85,900	2.29	5.8	2.5
West Dunbartonshire	40,780	92,600	2.27	42,170	90,100	2.14	3.4	-2.8
West Lothian	64,900	157,600	2.43	73,400	173,300	2.36	13.1	10.0

Footnotes¹ Household data are rounded to the nearest ten.² Population data are rounded to the nearest hundred.³ Averages and percentages are calculated from unrounded data.Download this as [Excel](#), [csv](#), [PDF](#)

Table A18: Census day usually resident population by whether living in a household or communal establishment, by council area, 2011

Council area	All usual residents ¹	Usual residents in households		Usual residents in communal establishments ³		Households with usual residents	
		Number ¹	% of council area population ²	Number ¹	% of council area population ²	Number ¹	Average household size ²
SCOTLAND	5,295,400	5,196,400	98.1	99,000	1.9	2,372,780	2.19
Aberdeen City	222,800	214,200	96.2	8,600	3.8	103,370	2.07
Aberdeenshire	253,000	250,500	99.0	2,500	1.0	104,710	2.39
Angus	116,000	114,400	98.7	1,500	1.3	51,620	2.22
Argyll & Bute	88,200	85,700	97.2	2,500	2.8	40,130	2.14
Clackmannanshire	51,400	50,400	98.1	1,000	1.9	22,730	2.22
Dumfries & Galloway	151,300	149,400	98.7	2,000	1.3	67,980	2.20
Dundee City	147,300	142,100	96.5	5,200	3.5	69,190	2.05
East Ayrshire	122,700	121,300	98.8	1,500	1.2	53,920	2.25
East Dunbartonshire	105,000	104,400	99.4	600	0.6	43,480	2.40
East Lothian	99,700	97,800	98.1	1,900	1.9	42,910	2.28
East Renfrewshire	90,600	90,000	99.4	600	0.6	37,210	2.42
Edinburgh, City of	476,600	462,300	97.0	14,300	3.0	223,050	2.07
Eilean Siar	27,700	27,300	98.7	400	1.3	12,580	2.17
Falkirk	156,000	154,200	98.8	1,800	1.2	68,730	2.24
Fife	365,200	357,400	97.9	7,800	2.1	160,950	2.22
Glasgow City	593,200	578,200	97.5	15,000	2.5	285,690	2.02
Highland	232,100	228,400	98.4	3,800	1.6	102,090	2.24
Inverclyde	81,500	80,300	98.5	1,200	1.5	37,440	2.14
Midlothian	83,200	82,300	98.9	900	1.1	34,980	2.35
Moray	93,300	91,200	97.8	2,100	2.2	40,060	2.28
North Ayrshire	138,200	136,600	98.9	1,500	1.1	62,500	2.19
North Lanarkshire	337,800	335,300	99.3	2,400	0.7	146,000	2.30
Orkney Islands	21,400	21,200	99.1	200	0.9	9,730	2.18
Perth & Kinross	146,700	142,200	96.9	4,500	3.1	64,780	2.19
Renfrewshire	174,900	172,700	98.7	2,200	1.3	80,910	2.13
Scottish Borders	113,900	112,600	98.9	1,300	1.1	52,500	2.14
Shetland Islands	23,200	23,000	99.2	200	0.8	9,950	2.31
South Ayrshire	112,800	111,300	98.6	1,500	1.4	51,290	2.17
South Lanarkshire	313,800	310,500	98.9	3,300	1.1	139,190	2.23
Stirling	90,200	85,900	95.2	4,400	4.8	37,570	2.29
West Dunbartonshire	90,700	90,100	99.2	700	0.8	42,170	2.14
West Lothian	175,100	173,300	99.0	1,800	1.0	73,400	2.36

Footnotes¹ Population data are rounded to the nearest hundred.² Includes communal establishment staff and their families where this is their usual residence.³ Averages and percentages are calculated from unrounded data.Download this as [Excel](#), [csv](#), [PDF](#)

Table A19: Usual residents of households, households by number of usual residents in household, average household size, Scotland, 1961 to 2011

Census Year	Persons ¹	Households						Average household size ³
	Household residents	All	1 person in household	2 people in household	3 people in household	4 people in household	5 or more people in household	
		Number of households²:						
1961	5,002,200	1,569,820	220,690	415,230	345,450	289,760	298,690	3.19
1971	5,050,600	1,686,060	312,880	480,390	317,170	286,500	289,120	3.00
1981	4,954,300	1,785,940	392,850	526,690	310,740	327,220	228,430	2.77
1991	4,921,200	2,020,050	578,440	644,620	336,160	312,190	148,640	2.44
2001	4,976,000	2,192,250	720,830	725,200	341,420	282,570	122,230	2.27
2011	5,196,400	2,372,780	823,340	807,630	357,510	272,310	112,000	2.19
		Percentage of households³:						
1961		100.0	14.1	26.5	22.0	18.5	19.0	
1971		100.0	18.6	28.5	18.8	17.0	17.1	
1981		100.0	22.0	29.5	17.4	18.3	12.8	
1991		100.0	28.6	31.9	16.6	15.5	7.4	
2001		100.0	32.9	33.1	15.6	12.9	5.6	
2011		100.0	34.7	34.0	15.1	11.5	4.7	

Footnotes¹ Population data are rounded to the nearest hundred.² Household data are rounded to the nearest ten.³ Averages and percentages are calculated from unrounded data.Download this as [Excel](#), [csv](#), [PDF](#)